

ARG44195 anti-MISP antibody

Package: 50 µg
Store at: -20°C

Summary

Product Description	Rabbit Polyclonal antibody recognizes MISP
Tested Reactivity	Hu
Tested Application	FACS, ICC/IF, WB
Host	Rabbit
Clonality	Polyclonal
Isotype	IgG
Target Name	MISP
Species	Human
Immunogen	Recombinant protein of Human MISP
Conjugation	Un-conjugated
Alternate Names	MISP; Mitotic Spindle Positioning; C19orf21; Caprice; MISP1; Mitotic Interactor And Substrate Of Plk1; Mitotic Interactor And Substrate Of PLK1; Mitotic Spindle Positioning Protein; DKFZp686H18209; Chromosome 19 Open Reading Frame 21

Application Instructions

Application table	Application	Dilution
	FACS	1-3 µg/1x10 ⁶ cells
	ICC/IF	5 µg/ml
	WB	0.25-0.5 µg/ml
Application Note	* The dilutions indicate recommended starting dilutions and the optimal dilutions or concentrations should be determined by the scientist.	

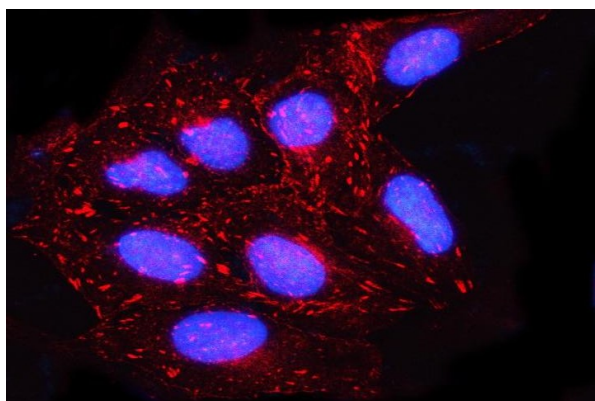
Properties

Form	Liquid
Purification	Affinity purification with immunogen.
Buffer	0.9% NaCl, 0.2% Na ₂ HPO ₄ , 0.05% Sodium azide and 5% BSA.
Preservative	0.05% Sodium azide
Stabilizer	5% BSA
Concentration	0.5 mg/ml
Storage instruction	For continuous use, store undiluted antibody at 2-8°C for up to a week. For long-term storage, aliquot and store at -20°C or below. Storage in frost free freezers is not recommended. Avoid repeated freeze/thaw cycles. Suggest spin the vial prior to opening. The antibody solution should be gently mixed before use.

Bioinformation

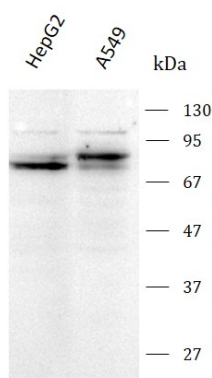
Gene Symbol	MISP
Gene Full Name	Mitotic Spindle Positioning
Background	The protein encoded by this gene is an actin-bundling protein involved in determining cell morphology and mitotic progression. The encoded protein is required for the proper positioning of the mitotic spindle. Two transcript variants, one protein-coding and the other non-protein coding, have been found for this gene.
Function	Plays a role in mitotic spindle orientation and mitotic progression. Regulates the distribution of dynactin at the cell cortex in a PLK1-dependent manner, thus stabilizing cortical and astral microtubule attachments required for proper mitotic spindle positioning. May link microtubules to the actin cytoskeleton and focal adhesions. May be required for directed cell migration and centrosome orientation. May also be necessary for proper stacking of the Golgi apparatus.
Calculated Mw	75 kDa
PTM	Phosphoprotein
Cellular Localization	Cell junction, Cytoplasm, Cytoskeleton

Images



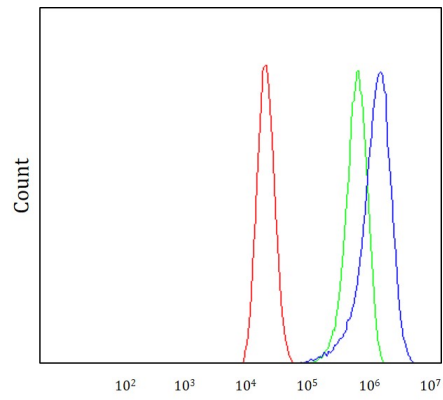
ARG44195 anti-MISP antibody ICC/IF image

Immunofluorescence: U2OS stained with ARG44195 anti-MISP antibody at 5 µg/mL dilution.



ARG44195 anti-MISP antibody WB image

Western blot: HepG2 and A549 stained with ARG44195 anti-MISP antibody at 0.5 µg/mL dilution.



ARG44195 anti-MISP antibody FACS image

Flow Cytometry: Caco-2 stained with ARG44195 anti-MISP antibody at $1\text{ }\mu\text{g}/1\times 10^6$ cells dilution.