

ARG44193 anti-MIS12 antibody

Package: 50 µg
Store at: -20°C

Summary

| | |
|---------------------|--|
| Product Description | Rabbit Polyclonal antibody recognizes MIS12 |
| Tested Reactivity | Hu |
| Tested Application | FACS, ICC/IF, WB |
| Host | Rabbit |
| Clonality | Polyclonal |
| Isotype | IgG |
| Target Name | MIS12 |
| Species | Human |
| Immunogen | Recombinant protein of Human MIS12 |
| Conjugation | Un-conjugated |
| Alternate Names | MIS12; MIS12 Kinetochores Complex Component; KNTC2AP; MTW1; Protein MIS12 Homolog; MGC2488; HMIS12; MIS12, MIND Kinetochores Complex Component, Homolog (S. Pombe); MIS12, MIND Kinetochores Complex Component, Homolog (Yeast); MIS12, MIND Kinetochores Complex Component, Homolog; Homolog Of Yeast Mis12; 2510025F08Rik; MIS12 Homolog; HMis12 |

Application Instructions

| Application table | Application | Dilution |
|-------------------|-------------|--------------------------------|
| | FACS | 1-3 µg/1x10 ⁶ cells |
| | ICC/IF | 5 µg/ml |
| | WB | 0.1-0.25 µg/ml |

Application Note * The dilutions indicate recommended starting dilutions and the optimal dilutions or concentrations should be determined by the scientist.

Properties

| | |
|---------------------|--|
| Form | Liquid |
| Purification | Affinity purification with immunogen. |
| Buffer | 0.9% NaCl, 0.2% Na ₂ HPO ₄ , 0.05% Sodium azide and 5% BSA. |
| Preservative | 0.05% Sodium azide |
| Stabilizer | 5% BSA |
| Concentration | 0.5 mg/ml |
| Storage instruction | For continuous use, store undiluted antibody at 2-8°C for up to a week. For long-term storage, aliquot and store at -20°C or below. Storage in frost free freezers is not recommended. Avoid repeated freeze/thaw cycles. Suggest spin the vial prior to opening. The antibody solution should be gently mixed |

before use.

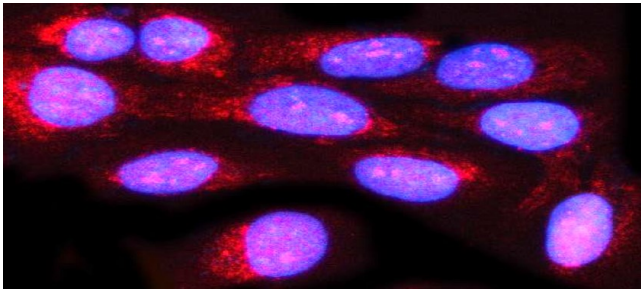
Note

For laboratory research only, not for drug, diagnostic or other use.

Bioinformation

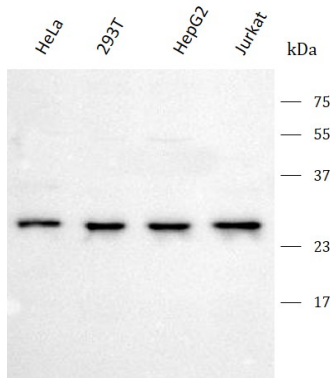
| | |
|-----------------------|--|
| Gene Symbol | MIS12 |
| Gene Full Name | Mis12 Kinetochore Complex Component |
| Background | Involved in attachment of mitotic spindle microtubules to kinetochore and kinetochore assembly. Located in kinetochore and nucleus. Part of MIS12/MIND type complex. |
| Function | Part of the MIS12 complex which is required for normal chromosome alignment and segregation and for kinetochore formation during mitosis. |
| Calculated Mw | 24 kDa |
| Cellular Localization | Centromere, Chromosome, Kinetochore |

Images



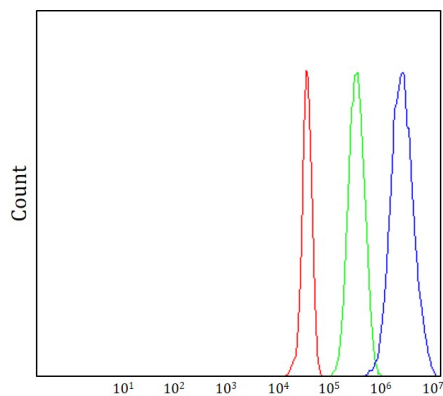
ARG44193 anti-MIS12 antibody ICC/IF image

Immunofluorescence: U2OS stained with ARG44193 anti-MIS12 antibody at 5 µg/mL dilution.



ARG44193 anti-MIS12 antibody WB image

Western blot: HeLa, 293T, HepG2 and Jurkat stained with ARG44193 anti-MIS12 antibody at 0.5 µg/mL dilution.



ARG44193 anti-MIS12 antibody FACS image

Flow Cytometry: JK stained with ARG44193 anti-MIS12 antibody at 1 µg/1x10⁶ cells dilution.