

ARG44149 anti-PDGF AA antibody

Package: 50 µg
Store at: -20°C

Summary

Product Description	Rabbit Polyclonal antibody recognizes PDGF AA
Tested Reactivity	Hu, Ms, Rat
Tested Application	ICC/IF, WB
Host	Rabbit
Clonality	Polyclonal
Isotype	IgG
Target Name	PDGF AA
Species	Human
Immunogen	E. coli derived recombinant human PDGF AA recombinant protein.
Conjugation	Un-conjugated
Alternate Names	Platelet-derived growth factor subunit A; PDGF subunit A; Platelet-derived growth factor alpha polypeptide; Platelet-derived growth factor A chain; PDGF-1; PDGF1; PDGF-A Application Instructions

Application Instructions

Application table	Application	Dilution
	ICC/IF	5 µg/ml
	WB	0.25-0.5 µg/ml

Application Note * The dilutions indicate recommended starting dilutions and the optimal dilutions or concentrations should be determined by the scientist.

Properties

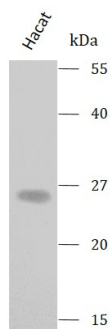
Form	Liquid
Purification	Affinity purification with immunogen.
Buffer	0.9% NaCl, 0.2% Na ₂ HPO ₄ , 0.05% Sodium azide and 4% Trehalose.
Preservative	0.05% Sodium azide
Stabilizer	4% Trehalose
Concentration	0.5 mg/ml
Storage instruction	For continuous use, store undiluted antibody at 2-8°C for up to a week. For long-term storage, aliquot and store at -20°C or below. Storage in frost free freezers is not recommended. Avoid repeated freeze/thaw cycles. Suggest spin the vial prior to opening. The antibody solution should be gently mixed before use.
Note	For laboratory research only, not for drug, diagnostic or other use.

Bioinformation

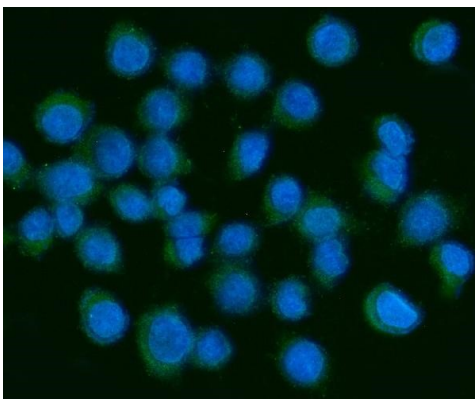
Gene Symbol	PDGFA
Gene Full Name	platelet-derived growth factor alpha polypeptide
Background	The protein encoded by this gene is a member of the platelet-derived growth factor family. The four members of this family are mitogenic factors for cells of mesenchymal origin and are characterized by a motif of eight cysteines. This gene product can exist either as a homodimer or as a heterodimer with the platelet-derived growth factor beta polypeptide, where the dimers are connected by disulfide bonds. Studies using knockout mice have shown cellular defects in oligodendrocytes, alveolar smooth muscle cells, and Leydig cells in the testis; knockout mice die either as embryos or shortly after birth. Two splice variants have been identified for this gene. [provided by RefSeq, Jul 2008]
Function	Growth factor that plays an essential role in the regulation of embryonic development, cell proliferation, cell migration, survival and chemotaxis. Potent mitogen for cells of mesenchymal origin. Required for normal lung alveolar septum formation during embryogenesis, normal development of the gastrointestinal tract, normal development of Leydig cells and spermatogenesis. Required for normal oligodendrocyte development and normal myelination in the spinal cord and cerebellum. Plays an important role in wound healing. Signaling is modulated by the formation of heterodimers with PDGFB (By similarity). [UniProt]
Calculated Mw	24 kDa

Images

ARG44149 anti-PDGF AA antibody WB image



Western blot: Hacat stained with ARG44149 anti-PDGF AA antibody at 0.5 $\mu\text{g}/\text{mL}$ dilution.

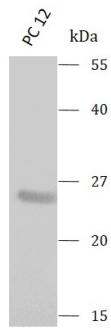


ARG44149 anti-PDGF AA antibody ICC/IF image

Immunofluorescence: SiHa stained with ARG44149 anti-PDGF AA antibody at 5 $\mu\text{g}/\text{ml}$ dilution.

ARG44149 anti-PDGF AA antibody WB image

Western blot: PC 12 stained with ARG44149 anti-PDGF AA antibody at 0.5 $\mu\text{g}/\text{mL}$ dilution.



ARG44149 anti-PDGF AA antibody WB image

Western blot: Mouse lung stained with ARG44149 anti-PDGF AA antibody at 0.5 $\mu\text{g}/\text{mL}$ dilution.

