

ARG44136 anti-MAGEC3 antibody

Package: 50 µg
Store at: -20°C

Summary

Product Description	Rabbit Polyclonal recognizes MAGEC3
Tested Reactivity	Hu
Tested Application	FACS, WB
Host	Rabbit
Clonality	Polyclonal
Isotype	IgG
Target Name	MAGEC3
Species	Human
Immunogen	Human MAGEC3 recombinant protein (Position: M1-E534).
Conjugation	Un-conjugated
Alternate Names	MAGEC3; MAGE Family Member C3; CT7.2; HCA2; MAGE-C3; Hepatocellular Carcinoma-Associated Antigen 2; Cancer/Testis Antigen Family 7, Member 2; Melanoma-Associated Antigen C3; Melanoma Antigen Family C3; Cancer/Testis Antigen 7.2; MAGE-C3 Antigen; Hepatocellular Carcinoma-Associated Protein HCA2; MAGE Family Testis And Tumor-Specific Protein; Melanoma Antigen Family C, 3; MAGEC4

Application Instructions

Application table	Application	Dilution
	FACS	1 - 3 µg/10 ⁶ cells
	WB	0.25 - 0.5 µg/ml

Application Note The dilutions indicate recommended starting dilutions and the optimal dilutions or concentrations should be determined by the scientist.

Properties

Form	Liquid
Purification	Affinity purification with immunogen.
Buffer	0.9% NaCl, 0.2% Na ₂ HPO ₄ , 0.05% Sodium azide and 4% Trehalose.
Preservative	0.05% Sodium azide
Stabilizer	4% Trehalose
Concentration	0.5 mg/ml
Storage instruction	For continuous use, store undiluted antibody at 2-8°C for up to a week. For long-term storage, aliquot and store at -20°C or below. Storage in frost free freezers is not recommended. Avoid repeated freeze/thaw cycles. Suggest spin the vial prior to opening. The antibody solution should be gently mixed before use.

Note

For laboratory research only, not for drug, diagnostic or other use.

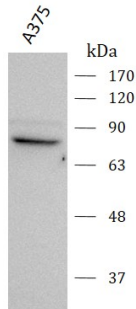
Bioinformation

Gene Symbol	MAGEC3
Gene Full Name	MAGE Family Member C3
Background	This gene is a member of the MAGEC gene family. The members of this family are not expressed in normal tissues, except for testis, and are expressed in tumors of various histological types. The MAGEC genes are clustered on chromosome Xq26-q27. Two transcript variants encoding distinct isoforms have been found for this gene.
Calculated Mw	72 kDa
Cellular Localization	Nucleus

Images

ARG44136 anti-MAGEC3 antibody WB image

Western blot: A375 stained with ARG44136 anti-MAGEC3 antibody at 0.5 µg/ml dilution.



ARG44136 anti-MAGEC3 antibody FACS image

Flow Cytometry: U251 stained with ARG44136 anti-MAGEC3 antibody at 1 µg/10⁶ cells dilution.

