

ARG44132 anti-NUPL2 antibody

Package: 50 µg
Store at: -20°C

Summary

Product Description	Rabbit Polyclonal recognizes NUPL2
Tested Reactivity	Hu, Ms, Rat
Tested Application	WB
Host	Rabbit
Clonality	Polyclonal
Isotype	IgG
Target Name	NUPL2
Species	Human
Immunogen	Human NUPL2 recombinant protein (Position: Q52-V423).
Conjugation	Un-conjugated
Alternate Names	NUP42; Nucleoporin 42; CG1; H_RG271G13.9; NLP_1; NUPL2; HCG1; Nucleoporin-Like Protein 1; Nucleoporin-Like Protein 2; Nucleoporin Like 2; Nucleoporin NUP42; Nucleoporin HCG1; NUP42 Homolog; NLP-1; Nucleoporin-42; NLP1; UIP1

Application Instructions

Application table	Application	Dilution
	WB	0.25 - 0.5 µg/ml
Application Note	The dilutions indicate recommended starting dilutions and the optimal dilutions or concentrations should be determined by the scientist.	

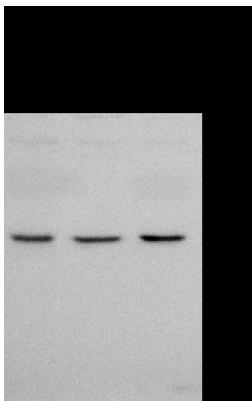
Properties

Form	Liquid
Purification	Affinity purification with immunogen.
Buffer	0.9% NaCl, 0.2% Na ₂ HPO ₄ , 0.05% Sodium azide and 4% Trehalose.
Preservative	0.05% Sodium azide
Stabilizer	4% Trehalose
Concentration	0.5 mg/ml
Storage instruction	For continuous use, store undiluted antibody at 2-8°C for up to a week. For long-term storage, aliquot and store at -20°C or below. Storage in frost free freezers is not recommended. Avoid repeated freeze/thaw cycles. Suggest spin the vial prior to opening. The antibody solution should be gently mixed before use.
Note	For laboratory research only, not for drug, diagnostic or other use.

Bioinformation

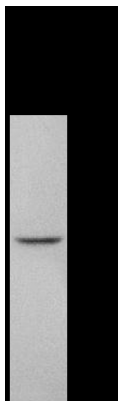
Gene Symbol	NUP42
Gene Full Name	Nucleoporin 42
Background	Enables nuclear export signal receptor activity. Involved in protein export from nucleus. Located in cytosol and nucleoplasm. Colocalizes with nuclear envelope.
Function	Required for the export of mRNAs containing poly(A) tails from the nucleus into the cytoplasm.
Calculated Mw	45 kDa
PTM	Glycoprotein, Phosphoprotein
Cellular Localization	Membrane, Nuclear pore complex, Nucleus

Images



ARG44132 anti-NUPL2 antibody WB image

Western blot: 293T, THP-1 and K562 stained with ARG44132 anti-NUPL2 antibody at 0.5 $\mu\text{g}/\text{ml}$ dilution.



ARG44132 anti-NUPL2 antibody WB image

Western blot: Mouse testis stained with ARG44132 anti-NUPL2 antibody at 0.5 $\mu\text{g}/\text{ml}$ dilution.