

ARG44127 anti-NSMF antibody

Package: 50 µg
Store at: -20°C

Summary

Product Description	Rabbit Polyclonal recognizes NSMF
Tested Reactivity	Hu
Tested Application	FACS, IHC-P, WB
Host	Rabbit
Clonality	Polyclonal
Isotype	IgG
Target Name	NSMF
Species	Human
Immunogen	Human NSMF recombinant protein (Position: E14-D527).
Conjugation	Un-conjugated
Alternate Names	NSMF; NMDA Receptor Synaptonuclear Signaling And Neuronal Migration Factor; Nasal Embryonic LHRH Factor; NELF; Nasal Embryonic Luteinizing Hormone-Releasing Hormone Factor; HH9

Application Instructions

Application table	Application	Dilution
	FACS	1 - 3 µg/10 ⁶ cells
	IHC-P	2-5 µg/ml
	WB	0.25-0.5 µg/ml

Application Note The dilutions indicate recommended starting dilutions and the optimal dilutions or concentrations should be determined by the scientist.

Properties

Form	Liquid
Purification	Affinity purification with immunogen.
Buffer	0.9% NaCl, 0.2% Na ₂ HPO ₄ , 0.05% Sodium azide and 4% Trehalose.
Preservative	0.05% Sodium azide
Stabilizer	4% Trehalose
Concentration	0.5 mg/ml
Storage instruction	For continuous use, store undiluted antibody at 2-8°C for up to a week. For long-term storage, aliquot and store at -20°C or below. Storage in frost free freezers is not recommended. Avoid repeated freeze/thaw cycles. Suggest spin the vial prior to opening. The antibody solution should be gently mixed before use.

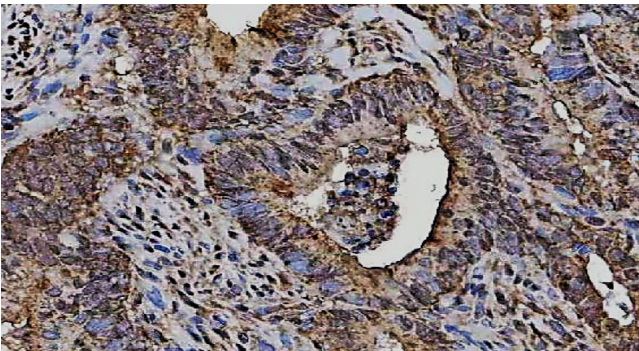
Note

For laboratory research only, not for drug, diagnostic or other use.

Bioinformation

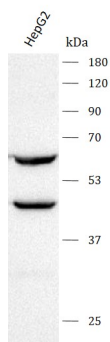
Gene Symbol	NSMF
Gene Full Name	NMDA Receptor Synaptonuclear Signaling And Neuronal Migration Factor
Background	The protein encoded by this gene is involved in guidance of olfactory axon projections and migration of luteinizing hormone-releasing hormone neurons. Defects in this gene are a cause of idiopathic hypogonadotropic hypogonadism (IHH). Several transcript variants encoding different isoforms have been found for this gene.
Function	Couples NMDA-sensitive glutamate receptor signaling to the nucleus and triggers long-lasting changes in the cytoarchitecture of dendrites and spine synapse processes. Part of the cAMP response element-binding protein (CREB) shut-off signaling pathway. Stimulates outgrowth of olfactory axons and migration of gonadotropin-releasing hormone (GnRH) and luteinizing-hormone-releasing hormone (LHRH) neuronal cells.
Calculated Mw	60 kDa
PTM	Lipoprotein, Myristate, Phosphoprotein
Cellular Localization	Cell membrane, Cell projection, Cytoplasm, Cytoskeleton, Membrane Nucleus, Synapse, Synaptosome

Images



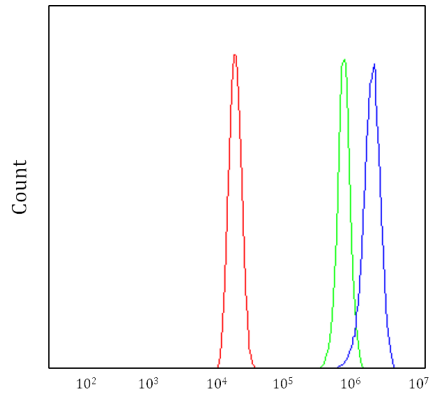
ARG44127 anti-NSMF antibody IHC-P image

Immunohistochemistry: Human colorectal adenocarcinoma stained with ARG44127 anti-NSMF antibody at 2 μ g/ml dilution.



ARG44127 anti-NSMF antibody WB image

Western blot: HepG2 stained with ARG44127 anti-NSMF antibody at 0.5 μ g/ml dilution.



ARG44127 anti-NSMF antibody FACS image

Flow Cytometry: HeLa stained with ARG44127 anti-NSMF antibody at $1 \mu\text{g}/10^6$ cells dilution.