

ARG44109 anti-NUDC antibody

Package: 50 µg
Store at: -20°C

Summary

Product Description	Rabbit Polyclonal recognizes NUDC
Tested Reactivity	Hu
Tested Application	FACS, ICC/IF, WB
Host	Rabbit
Clonality	Polyclonal
Isotype	IgG
Target Name	NUDC
Species	Human
Immunogen	Human NUDC recombinant protein (Position: Q176-K267).
Conjugation	Un-conjugated
Alternate Names	NUDC; Nuclear Distribution C, Dynein Complex Regulator; Nuclear Distribution Protein C Homolog; NudC Nuclear Distribution Protein; Nuclear Migration Protein NudC; Nuclear Distribution Gene C Homolog (A. Nidulans); Nuclear Distribution C Homolog (A. Nidulans); Nuclear Distribution Gene C Homolog; Nuclear Distribution C Homolog; NPD011; HNUDC; MNUDC

Application Instructions

Application table	Application	Dilution
	FACS	1 - 3 µg/10 ⁶ cells
	ICC/IF	5 µg/ml
	WB	0.25 - 0.5 µg/ml

Application Note The dilutions indicate recommended starting dilutions and the optimal dilutions or concentrations should be determined by the scientist.

Properties

Form	Liquid
Purification	Affinity purification with immunogen.
Buffer	0.9% NaCl, 0.2% Na ₂ HPO ₄ , 0.05% Sodium azide and 4% Trehalose.
Preservative	0.05% Sodium azide
Stabilizer	4% Trehalose
Concentration	0.5 mg/ml
Storage instruction	For continuous use, store undiluted antibody at 2-8°C for up to a week. For long-term storage, aliquot and store at -20°C or below. Storage in frost free freezers is not recommended. Avoid repeated freeze/thaw cycles. Suggest spin the vial prior to opening. The antibody solution should be gently mixed

before use.

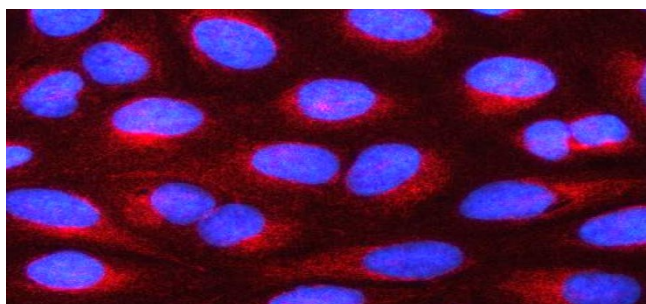
Note

For laboratory research only, not for drug, diagnostic or other use.

Bioinformation

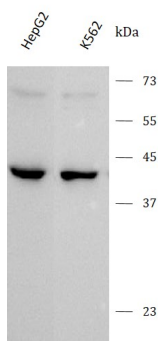
Gene Symbol	NUDC
Gene Full Name	Nuclear Distribution C, Dynein Complex Regulator
Background	This gene encodes a nuclear distribution protein that plays an essential role in mitosis and cytokinesis. The encoded protein is involved in spindle formation during mitosis and in microtubule organization during cytokinesis. Pseudogenes of this gene are found on chromosome 2.
Function	Plays a role in neurogenesis and neuronal migration.
Calculated Mw	38 kDa
PTM	Acetylation, Phosphoprotein
Cellular Localization	Cytoplasm, Cytoskeleton, Microtubule, Nucleus

Images



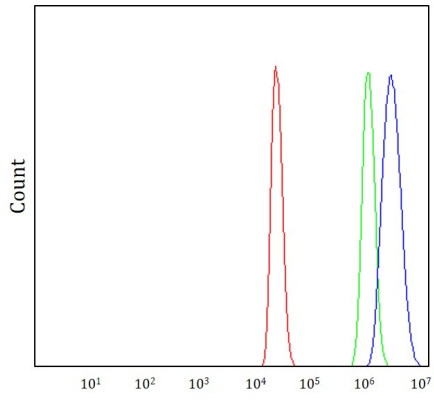
ARG44109 anti-NUDC antibody ICC/IF image

Immunofluorescence: U2OS stained with ARG44109 anti-NUDC antibody at 5 µg/ml dilution.



ARG44109 anti-NUDC antibody WB image

Western blot: HepG2 and K562 stained with ARG44109 anti-NUDC antibody at 0.5 µg/mL dilution.



ARG44109 anti-NUDC antibody FACS image

Flow Cytometry: 293T stained with ARG44109 anti-NUDC antibody at $1 \mu\text{g}/10^6$ cells dilution.