

ARG44099
anti-NPFFR2 antibodyPackage: 50 µg
Store at: -20°C

Summary

Product Description	Rabbit Polyclonal recognizes NPFFR2
Tested Reactivity	Hu
Tested Application	WB
Host	Rabbit
Clonality	Polyclonal
Isotype	IgG
Target Name	NPFFR2
Species	Human
Immunogen	Human NPFFR2 recombinant protein (Position: L14-E521).
Conjugation	Un-conjugated
Alternate Names	NPFFR2; Neuropeptide FF Receptor 2; NPFF2; NPGPR; GPR74; Neuropeptide G-Protein Coupled Receptor; G-Protein Coupled Receptor HLWAR77; G-Protein Coupled Receptor 74; Neuropeptide FF 2; G Protein-Coupled Receptor 74; HLWAR77

Application Instructions

Application table	Application	Dilution
	WB	0.25 - 0.5 µg/ml
Application Note	The dilutions indicate recommended starting dilutions and the optimal dilutions or concentrations should be determined by the scientist.	

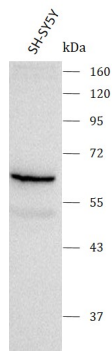
Properties

Form	Liquid
Purification	Affinity purification with immunogen.
Buffer	0.9% NaCl, 0.2% Na ₂ HPO ₄ , 0.05% Sodium azide and 4% Trehalose.
Preservative	0.05% Sodium azide
Stabilizer	4% Trehalose
Concentration	0.5 mg/ml
Storage instruction	For continuous use, store undiluted antibody at 2-8°C for up to a week. For long-term storage, aliquot and store at -20°C or below. Storage in frost free freezers is not recommended. Avoid repeated freeze/thaw cycles. Suggest spin the vial prior to opening. The antibody solution should be gently mixed before use.
Note	For laboratory research only, not for drug, diagnostic or other use.

Bioinformation

Gene Symbol	NPFFR2
Gene Full Name	Neuropeptide FF Receptor 2
Background	This gene encodes a member of a subfamily of G-protein-coupled neuropeptide receptors. This protein is activated by the neuropeptides A-18-amide (NPAF) and F-8-amide (NPFF) and may function in pain modulation and regulation of the opioid system. Alternative splicing results in multiple transcript variants.
Function	Receptor for NPAF (A-18-F-amide) and NPFF (F-8-F-amide) neuropeptides, also known as morphine-modulating peptides. Can also be activated by a variety of naturally occurring or synthetic FMRF-amide like ligands. This receptor mediates its action by association with G proteins that activate a phosphatidylinositol-calcium second messenger system.
Calculated Mw	60 kDa
PTM	Disulfide bond, Glycoprotein
Cellular Localization	Cell membrane, Membrane

Images



ARG44099 anti-NPFFR2 antibody WB image

Western blot: SH-SY5Y stained with ARG44099 anti-NPFFR2 antibody at 0.5 $\mu\text{g}/\text{mL}$ dilution.