

## ARG44098 anti-MP100 / NPEPPS antibody

Package: 50 µg  
Store at: -20°C

### Summary

Product Description	Rabbit Polyclonal recognizes MP100 / NPEPPS
Tested Reactivity	Hu, Ms, Rat
Tested Application	FACS, IHC-P, WB
Host	Rabbit
Clonality	Polyclonal
Isotype	IgG
Target Name	MP100 / NPEPPS
Species	Human
Immunogen	Human NPEPPS recombinant protein (Position: Y532-A896).
Conjugation	Un-conjugated
Alternate Names	Puromycin-sensitive aminopeptidase; PSA; EC 3.4.11.14; MP100; Cytosol alanyl aminopeptidase; AAP-S

### Application Instructions

Application table	Application	Dilution
	FACS	1 - 3 µg/10 <sup>6</sup> cells
	IHC-P	2 - 5 µg/ml
	WB	0.25 - 0.5 µg/ml

**Application Note** The dilutions indicate recommended starting dilutions and the optimal dilutions or concentrations should be determined by the scientist.

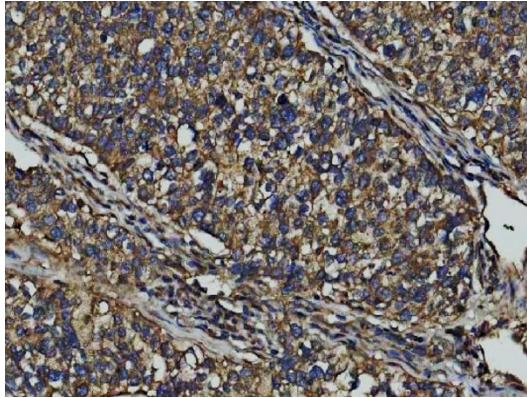
### Properties

Form	Liquid
Purification	Affinity purification with immunogen.
Buffer	0.9% NaCl, 0.2% Na <sub>2</sub> HPO <sub>4</sub> , 0.05% Sodium azide and 4% Trehalose.
Preservative	0.05% Sodium azide
Stabilizer	4% Trehalose
Concentration	0.5 mg/ml
Storage instruction	For continuous use, store undiluted antibody at 2-8°C for up to a week. For long-term storage, aliquot and store at -20°C or below. Storage in frost free freezers is not recommended. Avoid repeated freeze/thaw cycles. Suggest spin the vial prior to opening. The antibody solution should be gently mixed before use.
Note	For laboratory research only, not for drug, diagnostic or other use.

## Bioinformation

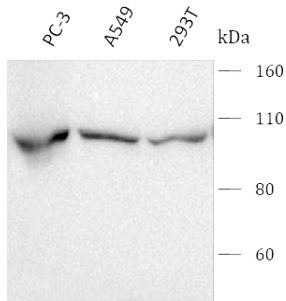
Background	This gene encodes the puromycin-sensitive aminopeptidase, a zinc metallopeptidase which hydrolyzes amino acids from the N-terminus of its substrate. The protein has been localized to both the cytoplasm and to cellular membranes. This enzyme degrades enkaphalins in the brain, and studies in mouse suggest that it is involved in proteolytic events regulating the cell cycle. [provided by RefSeq, Jul 2008]
Research Area	Neuroscience antibody
Calculated Mw	103 kDa

## Images



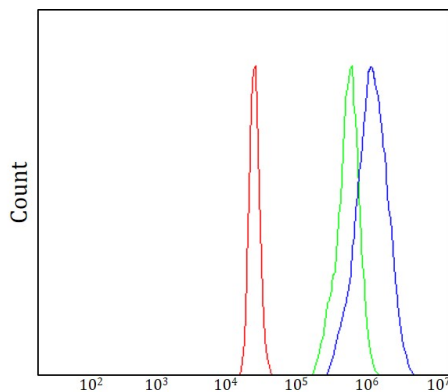
ARG44098 anti-MP100 / NPEPPS antibody IHC-P image

Immunohistochemistry: Human non-small cell lung cancer stained with ARG44098 anti-MP100 / NPEPPS antibody at 2  $\mu\text{g/ml}$  dilution.



ARG44098 anti-MP100 / NPEPPS antibody WB image

Western blot: PC-3, A549 and 293T stained with ARG44098 anti-MP100 / NPEPPS antibody at 0.5  $\mu\text{g/mL}$  dilution.

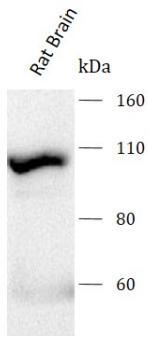


ARG44098 anti-MP100 / NPEPPS antibody FACS image

Flow Cytometry: 293T stained with ARG44098 anti-MP100 / NPEPPS antibody at 1  $\mu\text{g}/10^6$  cells dilution.

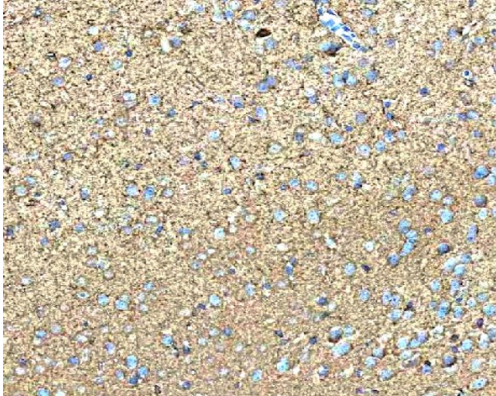
ARG44098 anti-MP100 / NPEPPS antibody WB image

Western blot: Rat brain stained with ARG44098 anti-MP100 / NPEPPS antibody at 0.5  $\mu\text{g}/\text{mL}$  dilution.



ARG44098 anti-MP100 / NPEPPS antibody IHC-P image

Immunohistochemistry: Mouse brain stained with ARG44098 anti-MP100 / NPEPPS antibody at 2  $\mu\text{g}/\text{ml}$  dilution.



ARG44098 anti-MP100 / NPEPPS antibody WB image

Western blot: Mouse brain stained with ARG44098 anti-MP100 / NPEPPS antibody at 0.5  $\mu\text{g}/\text{mL}$  dilution.

