

ARG44095 anti-NIT2 antibody

Package: 50 µg
Store at: -20°C

Summary

Product Description	Rabbit Polyclonal recognizes NIT2
Tested Reactivity	Hu, Ms, Rat
Tested Application	FACS, IHC-P, WB
Host	Rabbit
Clonality	Polyclonal
Isotype	IgG
Target Name	NIT2
Species	Human
Immunogen	Human NIT2 recombinant protein (Position: M1-K249).
Conjugation	Un-conjugated
Alternate Names	NIT2; Nitrilase Family Member 2; Omega-Amidase NIT2; Nitrilase Homolog 2; Epididymis Secretory Sperm Binding Protein Li 8a; Nitrilase Family, Member 2; Nit Protein 2; EC 3.5.1.3; HEL-S-8a

Application Instructions

Application table	Application	Dilution
	FACS	1 - 3 µg/10 ⁶ cells
	IHC-P	2 - 5 µg/ml
	WB	0.25 - 0.5 µg/ml

Application Note The dilutions indicate recommended starting dilutions and the optimal dilutions or concentrations should be determined by the scientist.

Properties

Form	Liquid
Purification	Affinity purification with immunogen.
Buffer	0.9% NaCl, 0.2% Na ₂ HPO ₄ , 0.05% Sodium azide and 4% Trehalose.
Preservative	0.05% Sodium azide
Stabilizer	4% Trehalose
Concentration	0.5 mg/ml
Storage instruction	For continuous use, store undiluted antibody at 2-8°C for up to a week. For long-term storage, aliquot and store at -20°C or below. Storage in frost free freezers is not recommended. Avoid repeated freeze/thaw cycles. Suggest spin the vial prior to opening. The antibody solution should be gently mixed before use.

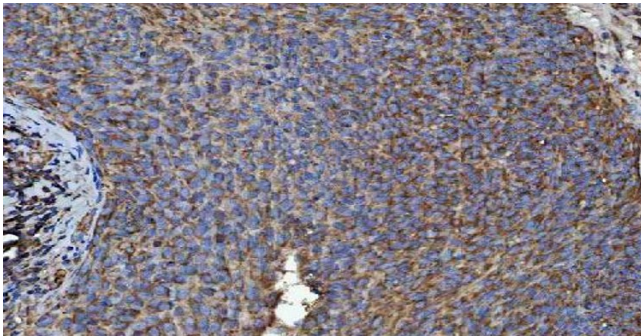
Note

For laboratory research only, not for drug, diagnostic or other use.

Bioinformation

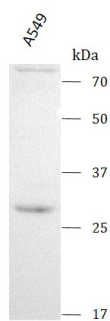
Gene Symbol	NIT2
Gene Full Name	Nitrilase Family Member 2
Background	Enables omega-amidase activity. Involved in asparagine metabolic process; glutamine metabolic process; and oxaloacetate metabolic process. Located in centrosome and cytosol.
Function	The role of omega-amidase is to remove potentially toxic intermediates by converting 2-oxoglutaramate and 2-oxosuccinamate to biologically useful 2-oxoglutarate and oxaloacetate, respectively.
Calculated Mw	30 kDa
PTM	Acetylation, Phosphoprotein
Cellular Localization	Cytoplasm

Images



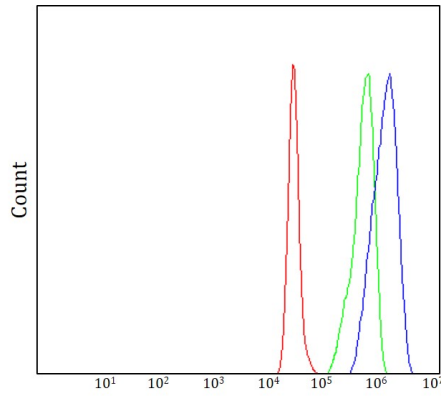
ARG44095 anti-NIT2 antibody IHC-P image

Immunohistochemistry: Human squamous cell carcinoma penis stained with ARG44095 anti-NIT2 antibody at 2 $\mu\text{g}/\text{ml}$ dilution.



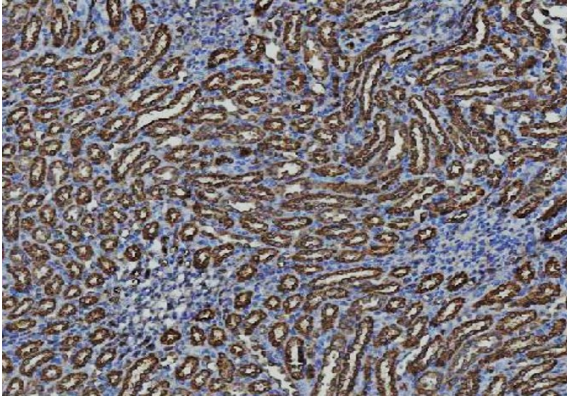
ARG44095 anti-NIT2 antibody WB image

Western blot: A549 stained with ARG44095 anti-NIT2 antibody at 0.5 $\mu\text{g}/\text{mL}$ dilution.



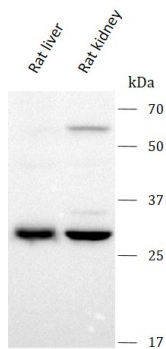
ARG44095 anti-NIT2 antibody FACS image

Flow Cytometry: A549 stained with ARG44095 anti-NIT2 antibody at $1 \mu\text{g}/10^6$ cells dilution.



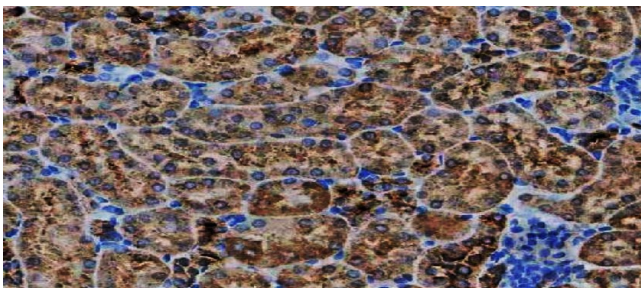
ARG44095 anti-NIT2 antibody IHC-P image

Immunohistochemistry: Rat kidney stained with ARG44095 anti-NIT2 antibody at $2 \mu\text{g}/\text{ml}$ dilution.



ARG44095 anti-NIT2 antibody WB image

Western blot: Rat liver and Rat kidney stained with ARG44095 anti-NIT2 antibody at $0.5 \mu\text{g}/\text{mL}$ dilution.



ARG44095 anti-NIT2 antibody IHC-P image

Immunohistochemistry: Mouse kidney stained with ARG44095 anti-NIT2 antibody at $2 \mu\text{g}/\text{ml}$ dilution.