

ARG44077 anti-PRODH antibody

Package: 50 µg
Store at: -20°C

Summary

Product Description	Rabbit Polyclonal recognizes PRODH
Tested Reactivity	Hu, Ms, Rat
Tested Application	FACS, IHC-P, WB
Host	Rabbit
Clonality	Polyclonal
Isotype	IgG
Target Name	PRODH
Species	Human
Immunogen	Human PRODH recombinant protein (Position: H116-E433).
Conjugation	Un-conjugated
Alternate Names	TP53I6; Proline oxidase 2; POX; EC 1.5.5.2; PRODH1; PRODH2; HSPOX2; p53-induced gene 6 protein; PIG6; Proline dehydrogenase 1, mitochondrial; Proline oxidase

Application Instructions

Application table	Application	Dilution
	FACS	1 - 3 µg/10 ⁶ cells
	IHC-P	2 - 5 µg/ml
	WB	0.25 - 0.5 µg/ml

Application Note The dilutions indicate recommended starting dilutions and the optimal dilutions or concentrations should be determined by the scientist.

Properties

Form	Liquid
Purification	Affinity purification with immunogen.
Buffer	0.9% NaCl, 0.2% Na ₂ HPO ₄ , 0.05% Sodium azide and 4% Trehalose.
Preservative	0.05% Sodium azide
Stabilizer	4% Trehalose
Concentration	0.5 mg/ml
Storage instruction	For continuous use, store undiluted antibody at 2-8°C for up to a week. For long-term storage, aliquot and store at -20°C or below. Storage in frost free freezers is not recommended. Avoid repeated freeze/thaw cycles. Suggest spin the vial prior to opening. The antibody solution should be gently mixed before use.

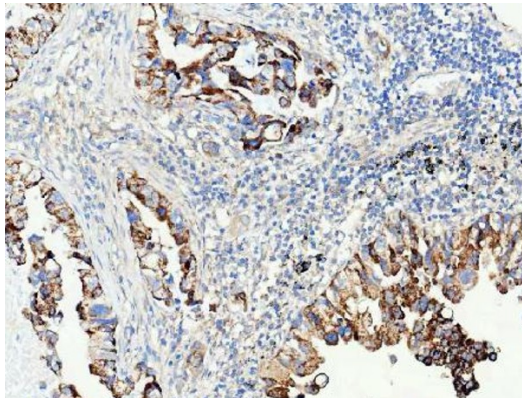
Note

For laboratory research only, not for drug, diagnostic or other use.

Bioinformation

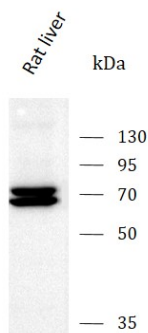
Gene Symbol	PRODH
Background	This gene encodes a mitochondrial protein that catalyzes the first step in proline degradation. Mutations in this gene are associated with hyperprolinemia type 1 and susceptibility to schizophrenia 4 (SCZD4). This gene is located on chromosome 22q11.21, a region which has also been associated with the contiguous gene deletion syndromes, DiGeorge and CATCH22. Alternatively spliced transcript variants encoding different isoforms have been found for this gene. [provided by RefSeq, Aug 2010]
Research Area	Cancer antibody; Cell Biology and Cellular Response antibody; Cell Death antibody; Metabolism antibody; Signaling Transduction antibody
Calculated Mw	68 kDa

Images



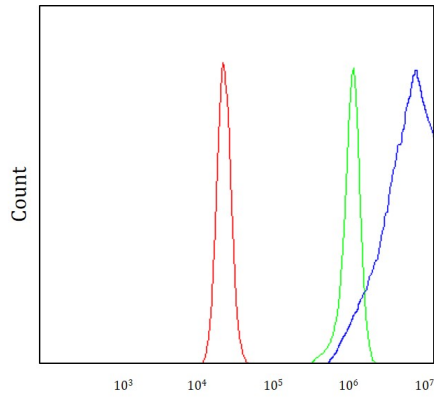
ARG44077 anti-PRODH antibody IHC-P image

Immunohistochemistry: Human lung adenocarcinoma stained with ARG44077 anti-PRODH antibody at 2 μ g/ml dilution.



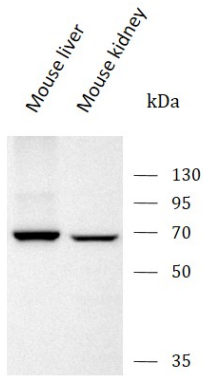
ARG44077 anti-PRODH antibody WB image

Western blot: Rat liver stained with ARG44077 anti-PRODH antibody at 0.5 μ g/mL dilution.



ARG44077 anti-PRODH antibody FACS image

Flow Cytometry: RT4 stained with ARG44077 anti-PRODH antibody at $1 \mu\text{g}/10^6$ cells dilution.



ARG44077 anti-PRODH antibody WB image

Western blot: Mouse liver and Mouse kidney stained with ARG44077 anti-PRODH antibody at $0.5 \mu\text{g}/\text{mL}$ dilution.