

ARG44065 anti-Sulfotransferase 1C4 / SULT1C4 antibody

Package: 50 µg
Store at: -20°C

Summary

Product Description	Rabbit Polyclonal recognizes Sulfotransferase 1C4 / SULT1C4
Tested Reactivity	Hu
Tested Application	FACS, WB
Host	Rabbit
Clonality	Polyclonal
Isotype	IgG
Target Name	Sulfotransferase 1C4 / SULT1C4
Species	Human
Immunogen	Human Sulfotransferase 1C4 / SULT1C4 recombinant protein (Position: M1-F302).
Conjugation	Un-conjugated
Alternate Names	SULT1C4; Sulfotransferase Family 1C Member 4; SULT1C2; SULT1C; Sulfotransferase Family, Cytosolic, 1C, Member 2; Sulfotransferase Family, Cytosolic, 1C, Member 4; Sulfotransferase 1C4; Sulfotransferase 1C2; EC 2.8.2.1 ;SULT1C#2; ST1C4; Sulfotransferase Family, Cytosolic, 1C, Member C2; EC 2.8.2

Application Instructions

Application table	Application	Dilution
	FACS	1 - 3 µg/1x10 ⁶ cells
	WB	0.25 - 0.5 µg/ml

Application Note The dilutions indicate recommended starting dilutions and the optimal dilutions or concentrations should be determined by the scientist.

Properties

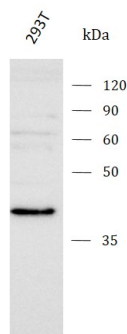
Form	Liquid
Purification	Affinity purification with immunogen.
Buffer	0.9% NaCl, 0.2% Na ₂ HPO ₄ , 0.05% Sodium azide and 4% Trehalose.
Preservative	0.05% Sodium azide
Stabilizer	4% Trehalose
Concentration	0.5 mg/ml
Storage instruction	For continuous use, store undiluted antibody at 2-8°C for up to a week. For long-term storage, aliquot and store at -20°C or below. Storage in frost free freezers is not recommended. Avoid repeated freeze/thaw cycles. Suggest spin the vial prior to opening. The antibody solution should be gently mixed before use.
Note	For laboratory research only, not for drug, diagnostic or other use.

Bioinformation

Gene Symbol	SULT1C4
Gene Full Name	Sulfotransferase Family 1C Member 4
Background	Sulfotransferase enzymes catalyze the sulfate conjugation of many hormones, neurotransmitters, drugs, and xenobiotic compounds. These cytosolic enzymes are different in their tissue distributions and substrate specificities. The gene structure (number and length of exons) is similar among family members. This gene encodes a protein that belongs to the SULT1 subfamily, responsible for transferring a sulfo moiety from PAPS to phenol-containing compounds.
Function	Sulfotransferase that utilizes 3'-phospho-5'-adenylyl sulfate (PAPS) as sulfonate donor to catalyze the sulfate conjugation of phenolic compounds. Can also sulfonate estrogenic compounds, however, the dietary flavonoids (phytoestrogen) and environmental estrogens, like bisphenol A are better substrates than 17beta-estradiol (E2).
Calculated Mw	36 kDa
Cellular Localization	Cytoplasm

Images

ARG44065 anti-Sulfotransferase 1C4 / SULT1C4 antibody WB image



Western blot: 293T stained with ARG44065 anti-Sulfotransferase 1C4 / SULT1C4 antibody at 0.5 µg/mL dilution.