

ARG44062 anti-Ninein / NIN antibody

Package: 50 µg
Store at: -20°C

Summary

Product Description	Rabbit Polyclonal recognizes Ninein / NIN
Tested Reactivity	Hu, Ms, Rat
Tested Application	FACS, WB
Host	Rabbit
Clonality	Polyclonal
Isotype	IgG
Target Name	Ninein / NIN
Species	Human
Immunogen	Human Ninein / NIN recombinant protein (Position: Q1023-H2090).
Conjugation	Un-conjugated
Alternate Names	NIN; Ninein; Glycogen Synthase Kinase 3 Beta-Interacting Protein; Ninein (GSK3B Interacting Protein); Hninein; Ninein Centrosomal Protein; GSK3B-Interacting Protein; KIAA1565; SCKL7

Application Instructions

Application table	Application	Dilution
	FACS	1 - 3 µg/1x10 ⁶ cells
	WB	0.25 - 0.5 µg/ml

Application Note The dilutions indicate recommended starting dilutions and the optimal dilutions or concentrations should be determined by the scientist.

Properties

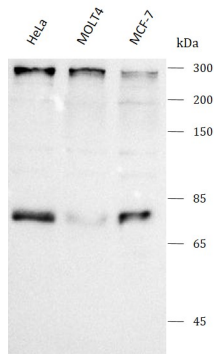
Form	Liquid
Purification	Affinity purification with immunogen.
Buffer	0.9% NaCl, 0.2% Na ₂ HPO ₄ , 0.05% Sodium azide and 4% Trehalose.
Preservative	0.05% Sodium azide
Stabilizer	4% Trehalose
Concentration	0.5 mg/ml
Storage instruction	For continuous use, store undiluted antibody at 2-8°C for up to a week. For long-term storage, aliquot and store at -20°C or below. Storage in frost free freezers is not recommended. Avoid repeated freeze/thaw cycles. Suggest spin the vial prior to opening. The antibody solution should be gently mixed before use.
Note	For laboratory research only, not for drug, diagnostic or other use.

Bioinformation

Gene Symbol	NIN
Gene Full Name	Ninein
Background	This gene encodes one of the proteins important for centrosomal function. This protein is important for positioning and anchoring the microtubules minus-ends in epithelial cells. Localization of this protein to the centrosome requires three leucine zippers in the central coiled-coil domain. Multiple alternatively spliced transcript variants that encode different isoforms have been reported.
Function	Centrosomal protein required in the positioning and anchorage of the microtubule minus-end in epithelial cells.
Calculated Mw	243 kDa
PTM	Phosphoprotein
Cellular Localization	Cytoplasm, Cytoskeleton, Microtubule

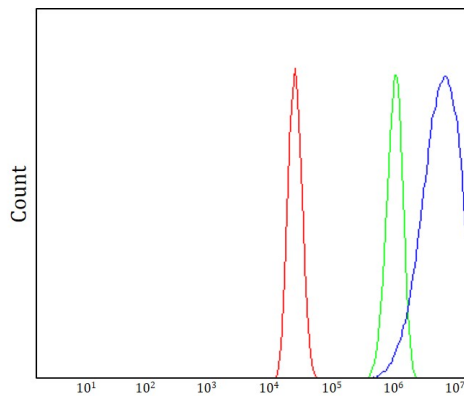
Images

ARG44062 anti-Ninein / NIN antibody WB image



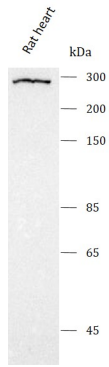
Western blot: HeLa, MOLT4 and MCF-7 stained with ARG44062 anti-Ninein / NIN antibody at 0.5 $\mu\text{g}/\text{mL}$ dilution.

ARG44062 anti-Ninein / NIN antibody FACS image



Flow Cytometry: MCF-7 stained with ARG44062 anti-Ninein / NIN antibody at 1 $\mu\text{g}/1 \times 10^6$ cells dilution.

ARG44062 anti-Ninein / NIN antibody WB image



Western blot: Rat heart stained with ARG44062 anti-Ninein / NIN antibody at 0.5 $\mu\text{g}/\text{mL}$ dilution.