

## ARG44051 anti-NLRX1 / NOD9 antibody

Package: 50 µg  
Store at: -20°C

### Summary

Product Description	Rabbit Polyclonal antibody recognizes NLRX1 / NOD9
Tested Reactivity	Hu, Ms, Rat
Tested Application	ELISA, FACS, ICC/IF, IHC-P, WB
Host	Rabbit
Clonality	Polyclonal
Isotype	IgG
Target Name	NLRX1 / NOD9
Species	Human
Immunogen	Recombinant fusion protein containing a sequence corresponding to amino acids 98-874 of Human NLRX1 / NOD9.
Conjugation	Un-conjugated
Alternate Names	CLR11.3; Nucleotide-binding oligomerization domain protein 5; Nucleotide-binding oligomerization domain protein 9; NOD26; Caterpillar protein 11.3; DLNB26; NOD5; Nucleotide-binding oligomerization domain protein 26; NOD9; NLR family member X1

### Application Instructions

Application table	Application	Dilution
	ELISA	0.1-0.5 µg/ml
	FACS	1-3 µg/1x10 <sup>6</sup> cells
	ICC/IF	5 µg/ml
	IHC-P	2-5 µg/ml
	WB	0.25-0.5 µg/ml

**Application Note** \* The dilutions indicate recommended starting dilutions and the optimal dilutions or concentrations should be determined by the scientist.

### Properties

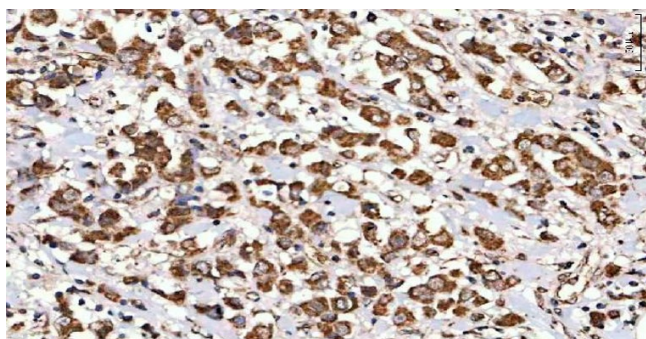
Form	Liquid
Purification	Affinity purified.
Buffer	0.9% NaCl, 0.2% Na <sub>2</sub> HPO <sub>4</sub> , 0.05% Sodium azide and 4% Trehalose.
Preservative	0.05% Sodium azide
Stabilizer	4% Trehalose
Concentration	0.5 mg/ml

Storage instruction	For continuous use, store undiluted antibody at 2-8°C for up to a week. For long-term storage, aliquot and store at -20°C. Storage in frost free freezers is not recommended. Avoid repeated freeze/thaw cycles. Suggest spin the vial prior to opening. The antibody solution should be gently mixed before use.
Note	For laboratory research only, not for drug, diagnostic or other use.

## Bioinformation

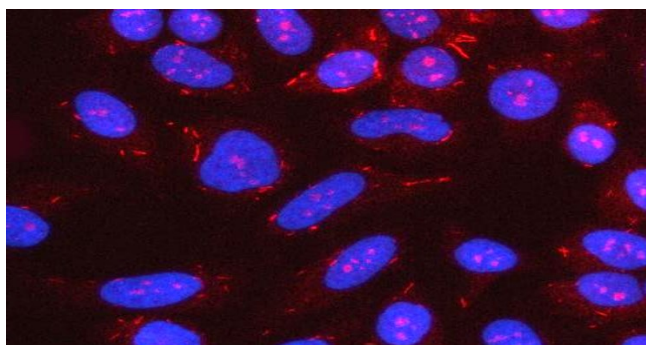
Background	This gene encodes a member of the NLR family. Alternative splicing has been observed at this gene locus and two transcript variants, encoding distinct isoforms, have been identified. [provided by RefSeq, Jul 2008]
Research Area	Immune System antibody
Calculated Mw	108 kDa

## Images



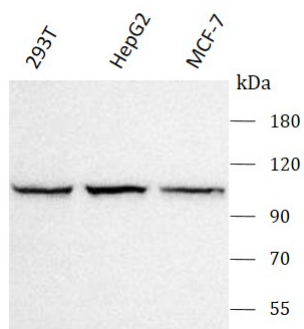
ARG44051 anti-NLRX1 / NOD9 antibody IHC-P image

Immunohistochemistry: Human breast cancer stained with ARG44051 anti-NLRX1 / NOD9 antibody at 2 μg/ml dilution.



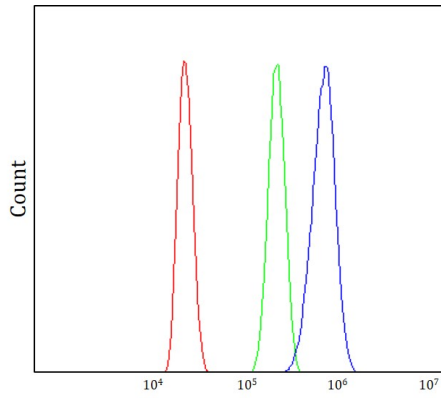
ARG44051 anti-NLRX1 / NOD9 antibody ICC/IF image

Immunofluorescence: HeLa stained with ARG44051 anti-NLRX1 / NOD9 antibody at 5 μg/ml dilution.



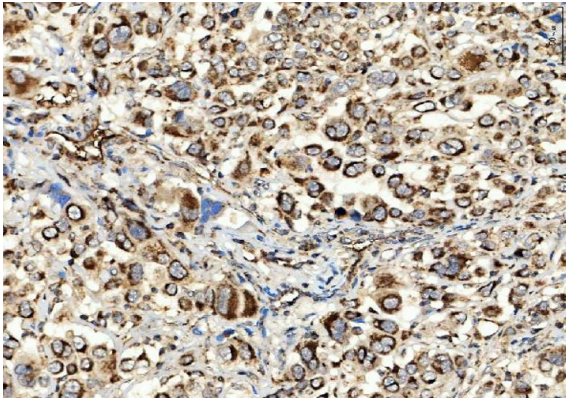
ARG44051 anti-NLRX1 / NOD9 antibody WB image

Western blot: 293T, HepG2 and MCF-7 stained with ARG44051 anti-NLRX1 / NOD9 antibody at 0.5 μg/mL dilution.



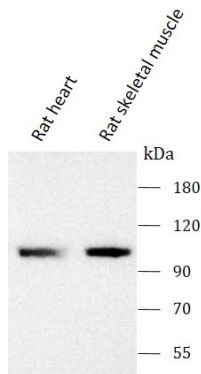
#### ARG44051 anti-NLRX1 / NOD9 antibody FACS image

Flow Cytometry: HL-60 stained with ARG44051 anti-NLRX1 / NOD9 antibody at 1  $\mu\text{g}/1 \times 10^6$  cells dilution.



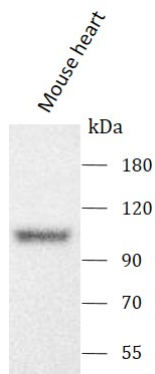
#### ARG44051 anti-NLRX1 / NOD9 antibody IHC-P image

Immunohistochemistry: Human lung adenocarcinoma stained with ARG44051 anti-NLRX1 / NOD9 antibody at 2  $\mu\text{g}/\text{ml}$  dilution.



#### ARG44051 anti-NLRX1 / NOD9 antibody WB image

Western blot: Rat heart and Rat skeletal muscle stained with ARG44051 anti-NLRX1 / NOD9 antibody at 0.5  $\mu\text{g}/\text{mL}$  dilution.



#### ARG44051 anti-NLRX1 / NOD9 antibody WB image

Western blot: Mouse skeletal muscle stained with ARG44051 anti-NLRX1 / NOD9 antibody at 0.5  $\mu\text{g}/\text{mL}$  dilution.