

## ARG44041 anti-AMBRA1 antibody

Package: 100 µl  
Store at: -20°C

### Summary

Product Description	Rabbit Polyclonal antibody recognizes AMBRA1
Tested Reactivity	Hu, Ms, Rat
Tested Application	ICC/IF, IHC-P, WB
Host	Rabbit
Clonality	Polyclonal
Isotype	IgG
Target Name	AMBRA1
Species	Human
Immunogen	Recombinant fusion protein containing a sequence corresponding to amino acids 1109-1208 of Human Ambra1 (NP_060219.2).
Conjugation	Un-conjugated
Alternate Names	DCAF3; Activating molecule in BECN1-regulated autophagy protein 1; WDR94

### Application Instructions

Application table	Application	Dilution
	ICC/IF	1:50 - 1:200
	IHC-P	1:50 - 1:200
	WB	1:500 - 1:1000

**Application Note** \* The dilutions indicate recommended starting dilutions and the optimal dilutions or concentrations should be determined by the scientist.

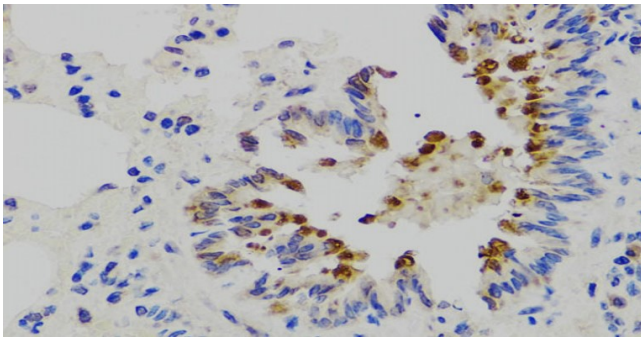
### Properties

Form	Liquid
Purification	Affinity purified.
Buffer	PBS (pH 7.3), 0.02% sodium azide and 50% Glycerol.
Preservative	0.02% sodium azide
Stabilizer	50% Glycerol
Storage instruction	For continuous use, store undiluted antibody at 2-8°C for up to a week. For long-term storage, aliquot and store at -20°C. Storage in frost free freezers is not recommended. Avoid repeated freeze/thaw cycles. Suggest spin the vial prior to opening. The antibody solution should be gently mixed before use.
Note	For laboratory research only, not for drug, diagnostic or other use.

## Bioinformation

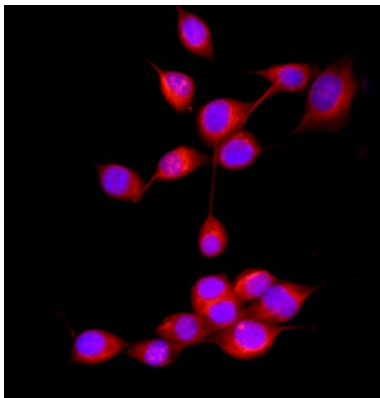
Gene Symbol	AMBRA1
Gene Full Name	autophagy/beclin-1 regulator 1
Background	Enables GTPase binding activity and ubiquitin protein ligase binding activity. Involved in macroautophagy; positive regulation of phosphatidylinositol 3-kinase activity; and response to mitochondrial depolarisation. Located in cytosol. Colocalizes with mitochondrion. Biomarker of multiple system atrophy.
Function	Regulates autophagy and development of the nervous system. Involved in autophagy in controlling protein turnover during neuronal development, and in regulating normal cell survival and proliferation (By similarity). [UniProt]
Calculated Mw	143 kDa
Cellular Localization	Autophagosome. Note: Localizes also to discrete punctae along the ciliary axoneme. [UniProt]

## Images



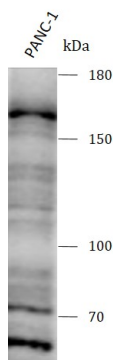
ARG44041 anti-AMBRA1 antibody IHC-P image

Immunohistochemistry: Rat lung stained with ARG44041 anti-AMBRA1 antibody at 1:100 dilution.



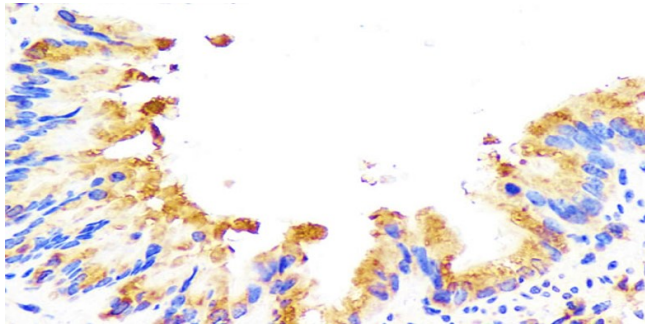
ARG44041 anti-AMBRA1 antibody ICC/IF image

Immunofluorescence: NIH/3T3 stained with ARG44041 anti-AMBRA1 antibody at 1:50 dilution.



ARG44041 anti-AMBRA1 antibody WB image

Western blot: PANC-1 stained with ARG44041 anti-AMBRA1 antibody at 1:800 dilution.



ARG44041 anti-AMBRA1 antibody IHC-P image

Immunohistochemistry: Mouse lung stained with ARG44041 anti-AMBRA1 antibody at 1:100 dilution.

---