

ARG44036 anti-CD123 / IL3RA antibody [6H6] (PerCP)

Package: 100 tests
Store at: 4°C

Summary

Product Description	PerCP-conjugated Mouse Monoclonal antibody [6H6] recognizes CD123 / IL3RA
Tested Reactivity	Hu
Tested Application	FACS
Specificity	The mouse monoclonal antibody 6H6 recognizes an extracellular epitope of CD123 (interleukin 3 receptor alpha), a 60-70 kDa transmembrane protein expressed by myeloid precursors, megakaryocytes, macrophages, dendritic cells, mast cells, basophils, and some B cells. This antibody does not inhibit IL-3 binding to its receptor.
Host	Mouse
Clonality	Monoclonal
Clone	6H6
Isotype	IgG1
Target Name	CD123 / IL3RA
Species	Human
Immunogen	IL3 receptor alpha chain expressed on the surface of transiently transfected COS cells.
Conjugation	PerCP
Alternate Names	IL-3R subunit alpha; CD123; CD antigen CD123; IL3RAY; IL-3R-alpha; IL3RY; IL3RX; IL3R; IL-3RA; IL-3 receptor subunit alpha; hIL-3Ra; Interleukin-3 receptor subunit alpha

Application Instructions

Application table	Application	Dilution
	FACS	10 µl / 10 ⁶ cells

Application Note * The dilutions indicate recommended starting dilutions and the optimal dilutions or concentrations should be determined by the scientist.

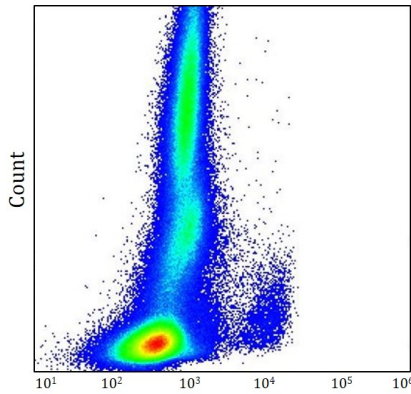
Properties

Form	Liquid
Purification	Purified
Buffer	PBS and 15 mM Sodium azide.
Preservative	15 mM Sodium azide
Storage instruction	Aliquot and store in the dark at 2-8°C. Keep protected from prolonged exposure to light. Avoid repeated freeze/thaw cycles. Suggest spin the vial prior to opening. The antibody solution should be gently mixed before use.
Note	For laboratory research only, not for drug, diagnostic or other use.

Bioinformation

Gene Symbol	IL3RA
Gene Full Name	interleukin 3 receptor, alpha (low affinity)
Background	The protein encoded by this gene is an interleukin 3 specific subunit of a heterodimeric cytokine receptor. The receptor is comprised of a ligand specific alpha subunit and a signal transducing beta subunit shared by the receptors for interleukin 3 (IL3), colony stimulating factor 2 (CSF2/GM-CSF), and interleukin 5 (IL5). The binding of this protein to IL3 depends on the beta subunit. The beta subunit is activated by the ligand binding, and is required for the biological activities of IL3. This gene and the gene encoding the colony stimulating factor 2 receptor alpha chain (CSF2RA) form a cytokine receptor gene cluster in a X-Y pseudoautosomal region on chromosomes X or Y. Alternatively spliced transcript variants encoding distinct isoforms have been found. [provided by RefSeq, Jun 2012]
Function	This is a receptor for interleukin-3. [UniProt]
Cellular Localization	Membrane; Single-pass type I membrane protein. [UniProt]

Images



ARG44036 anti-CD123 / IL3RA antibody [6H6] (PerCP) FACS image

Flow Cytometry: Human whole blood stained with ARG44036 anti-CD123 / IL3RA antibody [6H6] (PerCP) at 10 μ l / 100 μ l whole blood dilution.