

ARG44029 anti-Podoplanin antibody

Package: 100 µl
Store at: -20°C

Summary

Product Description	Recombinant Rabbit Polyclonal antibody recognizes Podoplanin
Tested Reactivity	Hu, Ms, Rat
Tested Application	IHC-P, WB
Host	Rabbit
Clonality	Polyclonal
Isotype	IgG
Target Name	Podoplanin
Species	Human
Immunogen	Synthetic peptide within aa. 100-200 of Human Podoplanin.
Conjugation	Un-conjugated
Alternate Names	T1A2; T1A; GP36; Aggrus; Gp38; T1A-2; Glycoprotein 36; PA2.26 antigen; T1A; AGGRUS; HT1A-1; OTS8; Gp36; PA2.26; T1-alpha; Podoplanin; GP40

Application Instructions

Application table	Application	Dilution
	IHC-P	1:20 - 1:50
	WB	1:500 - 1:1000
Application Note	IHC-P: Antigen Retrieval: Heat mediation was performed in Tris/EDTA buffer (pH 6.0). * The dilutions indicate recommended starting dilutions and the optimal dilutions or concentrations should be determined by the scientist.	
Observed Size	36 kDa	

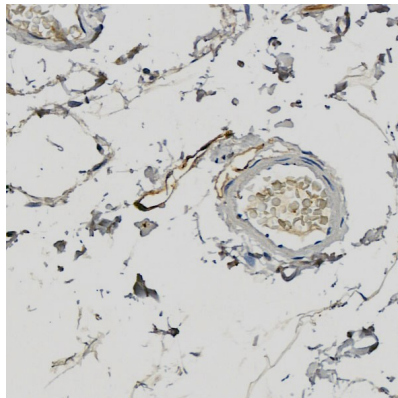
Properties

Form	Liquid
Purification	Affinity purified.
Buffer	PBS (pH7.3), 0.05% Proclin300 and 50% Glycerol.
Preservative	0.05% Proclin300
Stabilizer	50% Glycerol
Storage instruction	For continuous use, store undiluted antibody at 2-8°C for up to a week. For long-term storage, aliquot and store at -20°C. Storage in frost free freezers is not recommended. Avoid repeated freeze/thaw cycles. Suggest spin the vial prior to opening. The antibody solution should be gently mixed before use.
Note	For laboratory research only, not for drug, diagnostic or other use.

Bioinformation

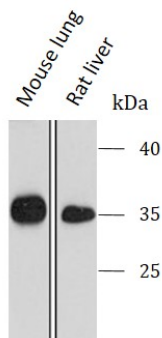
Gene Symbol	PDPN
Gene Full Name	podoplanin
Background	This gene encodes a type-I integral membrane glycoprotein with diverse distribution in human tissues. The physiological function of this protein may be related to its mucin-type character. The homologous protein in other species has been described as a differentiation antigen and influenza-virus receptor. The specific function of this protein has not been determined but it has been proposed as a marker of lung injury. Alternatively spliced transcript variants encoding different isoforms have been identified. [provided by RefSeq, Jul 2008]
Function	May be involved in cell migration and/or actin cytoskeleton organization. When expressed in keratinocytes, induces changes in cell morphology with transfected cells showing an elongated shape, numerous membrane protrusions, major reorganization of the actin cytoskeleton, increased motility and decreased cell adhesion. Required for normal lung cell proliferation and alveolus formation at birth. Induces platelet aggregation. Does not have any effect on folic acid or amino acid transport. Does not function as a water channel or as a regulator of aquaporin-type water channels. [UniProt]
Calculated Mw	17 kDa
PTM	Extensively O-glycosylated. Contains sialic acid residues. O-glycosylation is necessary for platelet aggregation activity. The N-terminus is blocked. [UniProt]
Cellular Localization	Podoplanin: Membrane; Single-pass type I membrane protein. Cell projection, lamellipodium membrane; Single-pass type I membrane protein. Cell projection, filopodium membrane; Single-pass type I membrane protein. Cell projection, microvillus membrane; Single-pass type I membrane protein. Cell projection, ruffle membrane; Single-pass type I membrane protein. Membrane raft. Apical cell membrane. Basolateral cell membrane. Cell projection, invadopodium. [UniProt]

Images



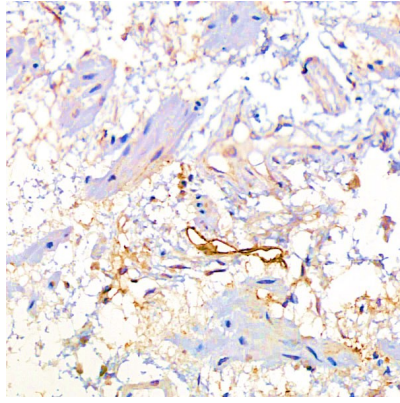
ARG44029 anti-Podoplanin antibody IHC-P image

Immunohistochemistry: Human colon stained with ARG44029 anti-Podoplanin antibody at 1:20 dilution.



ARG44029 anti-Podoplanin antibody WB image

Western blot: Mouse lung and Rat kidney stained with ARG44029 anti-Podoplanin antibody at 1:1000 dilution.



ARG44029 anti-Podoplanin antibody IHC-P image

Immunohistochemistry: Human esophagus stained with ARG44029 anti-Podoplanin antibody at 1:20 dilution.