

## ARG43977 anti-PRPF6 antibody

Package: 50 µg  
Store at: -20°C

### Summary

Product Description	Rabbit Polyclonal antibody recognizes PRPF6
Tested Reactivity	Hu, Ms, Rat
Tested Application	ELISA, FACS, ICC/IF, WB
Host	Rabbit
Clonality	Polyclonal
Target Name	PRPF6
Species	Human
Immunogen	Human PRPF6 recombinant protein
Conjugation	Un-conjugated
Alternate Names	PRPF6; Pre-mRNA Processing Factor 6; ANT-1; SNRNP102; C20orf14; U5-102K; HPrp6; Prp6; RP60; TOM; U5 SnRNP-Associated 102 KDa Protein; Pre-mRNA-Processing Factor 6; U5-102 KDa Protein; PRP6 Homolog; BB152O15.1; P102 U5 Small Nuclear Ribonucleoprotein Particle-Binding Protein ; Androgen Receptor N-Terminal Domain Transactivating Protein-1; Putative Mitochondrial Outer Membrane Protein Import Receptor; Androgen Receptor N-Terminal Domain-Transactivating Protein; PRP6 Pre-mRNA Processing Factor 6 Homolog; Chromosome 20 Open Reading Frame 14; ANT1

### Application Instructions

Application table	Application	Dilution
	ELISA	0.1-0.5 µg/ml
	FACS	1-3 µg/1x10 <sup>6</sup>
	ICC/IF	5 µg/ml
	WB	0.25-0.5 µg/ml

**Application Note** \* The dilutions indicate recommended starting dilutions and the optimal dilutions or concentrations should be determined by the scientist.

### Properties

Form	Liquid
Buffer	0.9% NaCl, 0.2% Na <sub>2</sub> HPO <sub>4</sub> and 4% Trehalose.
Stabilizer	4% Trehalose
Concentration	0.5 mg/ml
Storage instruction	For continuous use, store undiluted antibody at 2-8°C for up to a week. For long-term storage, aliquot and store at -20°C or below. Storage in frost free freezers is not recommended. Avoid repeated freeze/thaw cycles. Suggest spin the vial prior to opening. The antibody solution should be gently mixed before use.

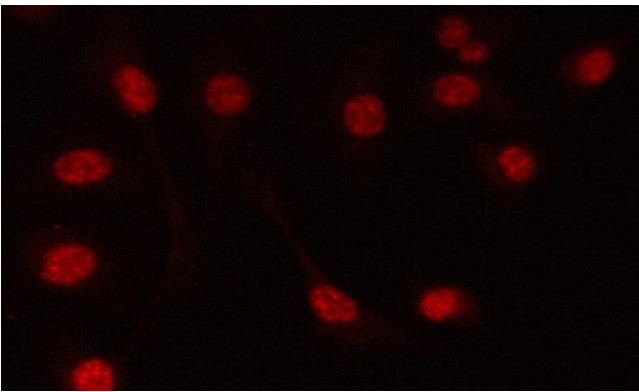
## Bioinformation

---

Gene Symbol	PRPF6
Gene Full Name	Pre-mRNA Processing Factor 6
Background	The protein encoded by this gene appears to be involved in pre-mRNA splicing, possibly acting as a bridging factor between U5 and U4/U6 snRNPs in formation of the spliceosome. The encoded protein also can bind androgen receptor, providing a link between transcriptional activation and splicing.
Function	Involved in pre-mRNA splicing as component of the U4/U6-U5 tri-snRNP complex, one of the building blocks of the spliceosome.
Calculated Mw	107 kDa
PTM	Phosphoprotein
Cellular Localization	Nucleus, Spliceosome

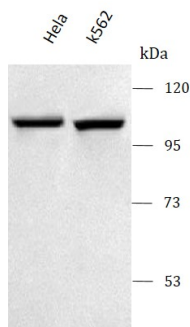
---

## Images



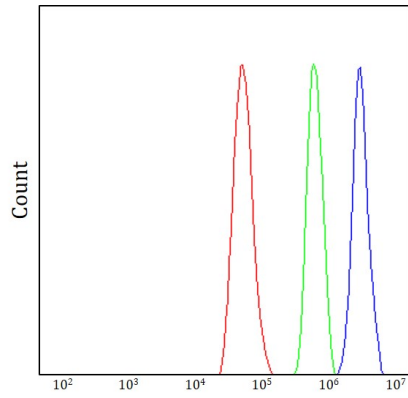
ARG43977 anti-PRPF6 antibody WB image ICC/IF image

Immunofluorescence: A549 cells stained with ARG43977 anti-PRPF6 antibody WB image at 5 µg/ml dilution.



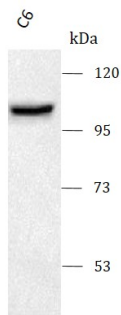
ARG43977 anti-PRPF6 antibody WB image

Western blot: HeLa and K562 stained with ARG43977 anti-PRPF6 antibody at 0.5 µg/mL dilution.



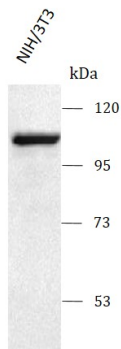
#### ARG43977 anti-PRPF6 antibody FACS image

Flow Cytometry: HeLa cells stained with ARG43977 anti-PRPF6 antibody (blue) at 1  $\mu\text{g}/1 \times 10^6$  cells dilution.



#### ARG43977 anti-PRPF6 antibody WB image

Western blot: C6 cells stained with ARG43977 anti-PRPF6 antibody at 0.5  $\mu\text{g}/\text{mL}$  dilution.



#### ARG43977 anti-PRPF6 antibody WB image

Western blot: NIH/3T3 cells stained with ARG43977 anti-PRPF6 antibody at 0.5  $\mu\text{g}/\text{mL}$  dilution.