

## ARG43945 anti-PLA2G15 antibody

Package: 50 µg  
Store at: -20°C

### Summary

Product Description	Rabbit Polyclonal antibody recognizes PLA2G15
Tested Reactivity	Hu
Tested Application	ELISA, ICC/IF, WB
Host	Rabbit
Clonality	Polyclonal
Target Name	PLA2G15
Species	Human
Immunogen	Human PLA2G15 recombinant protein
Conjugation	Un-conjugated
Alternate Names	PLA2G15; Phospholipase A2 Group XV; LLPL; GXVPLA2; LYPLA3; Lysophospholipase 3 (Lysosomal Phospholipase A2); Lysosomal Phospholipase A And Acyltransferase; LCAT-Like Lysophospholipase; Lysosomal Phospholipase A2; 1-O-Acylceramide Synthase; LPLA2; ACS; Phospholipase A2, Group XV; Group XV Phospholipase A2; Lysophospholipase 3; EC 3.1.1.32; EC 2.3.1.43; EC 3.1.1.5; EC 2.3.1.- ; EC 3.1.1.4

### Application Instructions

Application table	Application	Dilution
	ELISA	0.1-0.5 µg/ml
	ICC/IF	5 µg/ml
	WB	0.25-0.5 µg/ml

**Application Note** \* The dilutions indicate recommended starting dilutions and the optimal dilutions or concentrations should be determined by the scientist.

### Properties

Form	Liquid
Buffer	0.9% NaCl, 0.2% Na <sub>2</sub> HPO <sub>4</sub> and 4% Trehalose.
Stabilizer	4% Trehalose
Concentration	0.5 mg/ml
Storage instruction	For continuous use, store undiluted antibody at 2-8°C for up to a week. For long-term storage, aliquot and store at -20°C or below. Storage in frost free freezers is not recommended. Avoid repeated freeze/thaw cycles. Suggest spin the vial prior to opening. The antibody solution should be gently mixed before use.

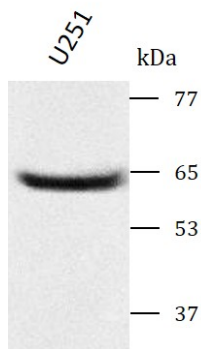
## Bioinformation

---

Gene Symbol	PLA2G15
Gene Full Name	Phospholipase A2 Group XV
Background	Lysophospholipases are enzymes that act on biological membranes to regulate the multifunctional lysophospholipids. The protein encoded by this gene hydrolyzes lysophosphatidylcholine to glycerophosphorylcholine and a free fatty acid. This enzyme is present in the plasma and thought to be associated with high-density lipoprotein. A later paper contradicts the function of this gene. It demonstrates that this gene encodes a lysosomal enzyme instead of a lysophospholipase and has both calcium-independent phospholipase A2 and transacylase activities.
Function	Has dual calcium-independent phospholipase and O-acyltransferase activities with a potential role in glycerophospholipid homeostasis and remodeling of acyl groups of lipophilic alcohols present in acidic cellular compartments.
Calculated Mw	47 kDa
PTM	Disulfide bond, Glycoprotein
Cellular Localization	Lysosome, Membrane, Secreted

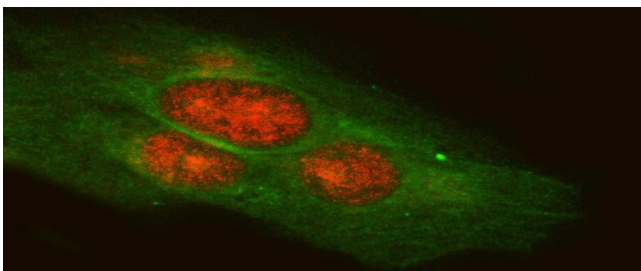
## Images

---



ARG43945 anti-PLA2G15 antibody WB image

Western blot: U251 stained with ARG43945 anti-PLA2G15 antibody at 0.5  $\mu\text{g}/\text{mL}$  dilution.



ARG43945 anti-PLA2G15 antibody ICC/IF image

Immunofluorescence: U2OS cells stained with ARG43945 anti-PLA2G15 antibody at 5  $\mu\text{g}/\text{ml}$  dilution.