

ARG43881 anti-RBM15 antibody

Package: 50 µg
Store at: -20°C

Summary

Product Description	Rabbit Polyclonal antibody recognizes RBM15
Tested Reactivity	Hu, Ms, Rat
Tested Application	ELISA, FACS, IHC-P, WB
Host	Rabbit
Clonality	Polyclonal
Isotype	IgG
Target Name	RBM15
Species	Human
Immunogen	Human RBM15 recombinant protein
Conjugation	Un-conjugated
Alternate Names	Putative RNA-binding protein 15; RNA-binding motif protein 15; OTT1; One-twenty two protein 1; SPEN; OTT

Application Instructions

Application table	Application	Dilution
	ELISA	0.1-0.5 µg/ml
	FACS	1-3 µg/1x10 ⁶
	IHC-P	2-5 µg/ml
	WB	0.25-0.5 µg/ml
Application Note	* The dilutions indicate recommended starting dilutions and the optimal dilutions or concentrations should be determined by the scientist.	
Observed Size	~ 115 kDa	

Properties

Form	Liquid
Purification	Affinity purified with Immunogen.
Buffer	0.9% NaCl, 0.2% Na ₂ HPO ₄ and 4% Trehalose.
Stabilizer	4% Trehalose
Concentration	0.5 mg/ml
Storage instruction	For continuous use, store undiluted antibody at 2-8°C for up to a week. For long-term storage, aliquot and store at -20°C or below. Storage in frost free freezers is not recommended. Avoid repeated freeze/thaw cycles. Suggest spin the vial prior to opening. The antibody solution should be gently mixed before use.

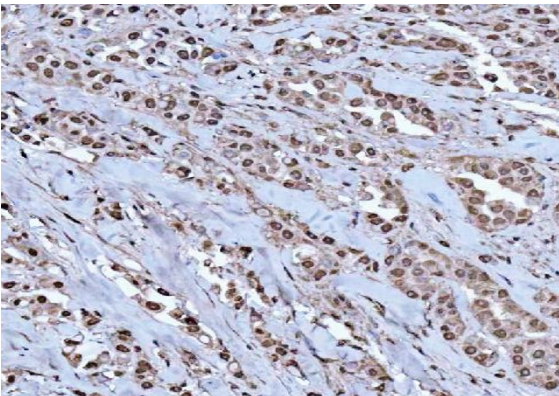
Note

For laboratory research only, not for drug, diagnostic or other use.

Bioinformation

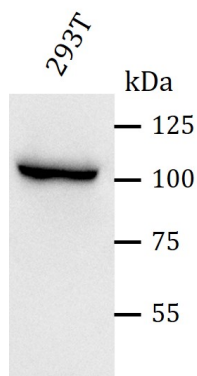
Gene Symbol	RBM15
Gene Full Name	RNA Binding Motif Protein 15
Background	Members of the SPEN (Split-end) family of proteins, including RBM15, have repressor function in several signaling pathways and may bind to RNA through interaction with spliceosome components.
Function	RNA-binding protein that acts as a key regulator of N6-methyladenosine (m6A) methylation of RNAs, thereby regulating different processes, such as hematopoietic cell homeostasis, alternative splicing of mRNAs and X chromosome inactivation mediated by Xist RNA.
Highlight	Related news: m6A reader YTHDF2 in mRNA decay and aggresome formation:
Calculated Mw	107 kDa
PTM	Acetylation, Isopeptide bond, Methylation, Phosphoprotein, Ubl conjugation
Cellular Localization	Membrane, Nucleus

Images



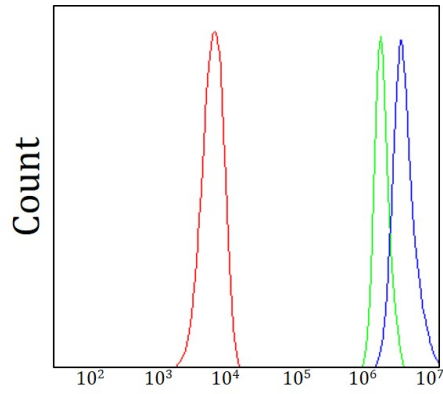
ARG43881 anti-RBM15 antibody IHC-P image

Immunohistochemistry: Human breast cancer stained with ARG43881 anti-RBM15 antibody at 2 µg/ml dilution.



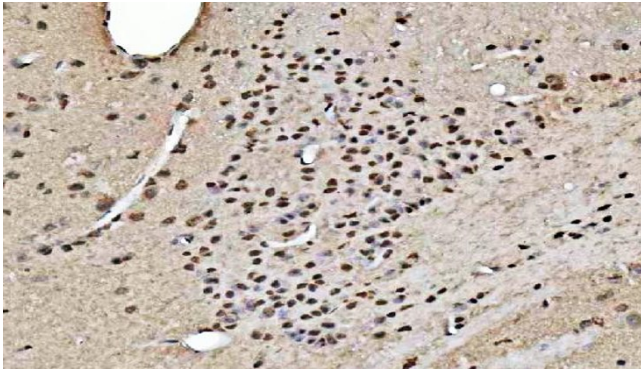
ARG43881 anti-RBM15 antibody WB image

Western blot: 293T cells stained with ARG43875 ARG43881 anti-RBM15 antibody at 1:5000 dilution.



ARG43881 anti-RBM15 antibody FACS image

Flow Cytometry: PC-3 cells stained with ARG43881 anti-RBM15 antibody (blue) at $1 \mu\text{g}/1 \times 10^6$ cells dilution.



ARG43881 anti-RBM15 antibody IHC-P image

Immunohistochemistry: Mouse brain stained with ARG43881 anti-RBM15 antibody at $2 \mu\text{g}/\text{ml}$ dilution.



ARG43881 anti-RBM15 antibody IHC-P image

Immunohistochemistry: Rat brain stained with ARG43881 anti-RBM15 antibody at $2 \mu\text{g}/\text{ml}$ dilution.