

ARG43864
anti-IgE antibody [4H10] (APC)Package: 100 µg
Store at: 4°C

Summary

Product Description	APC-conjugated Mouse Monoclonal antibody recognize IgE.
Tested Reactivity	Hu
Tested Application	FACS
Host	Mouse
Clonality	Monoclonal
Clone	4H10
Isotype	IgG1
Species	Human
Immunogen	Human IgE
Conjugation	APC
Alternate Names	IgE; Immunoglobulin E

Application Instructions

Application table	Application	Dilution
	FACS	0.5-3 µg/ml

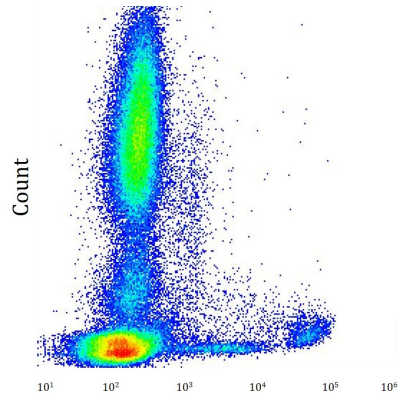
Application Note * The dilutions indicate recommended starting dilutions and the optimal dilutions or concentrations should be determined by the scientist.

Properties

Form	Liquid
Purification	Protein-A affinity chromatography
Buffer	PBS (pH 7.4) and 15 mM Sodium azide
Preservative	15 mM Sodium azide
Concentration	0.1 mg/ml
Storage instruction	Protect from prolonged exposure to light. Do not freeze.

Bioinformation

Gene Symbol	IgE
Gene Full Name	Immunoglobulin E



ARG43864 anti-IgE antibody [4H10] (APC) FACS image

Flow Cytometry: Human whole blood stained with ARG43864 anti-IgE antibody [4H10] (APC) at 9 µg / ml.