

ARG43812
anti-IGFBP5 antibodyPackage: 50 µl
Store at: -20°C

Summary

Product Description	Rabbit Polyclonal antibody recognizes IGFBP5
Tested Reactivity	Hu
Tested Application	WB
Host	Rabbit
Clonality	Polyclonal
Isotype	IgG
Target Name	IGFBP5
Species	Human
Immunogen	Recombinant protein within a.a. 20-280 of Human IGFBP5.
Conjugation	Un-conjugated
Alternate Names	IBP5; IBP-5; IGF-binding protein 5; Insulin-like growth factor-binding protein 5; IGFBP-5

Application Instructions

Application table	Application	Dilution
	WB	1:500 - 1:2000
Application Note	* The dilutions indicate recommended starting dilutions and the optimal dilutions or concentrations should be determined by the scientist.	
Positive Control	BT-474; U2OS	
Observed Size	30-35 kDa	

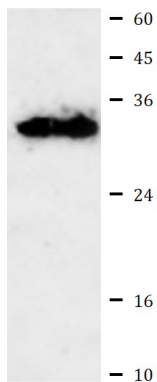
Properties

Form	Liquid
Purification	Affinity purified
Buffer	PBS (pH7.3) with 0.05% Proclin300 and 50% Glycerol.
Preservative	0.05% Proclin300
Stabilizer	50% Glycerol
Storage instruction	For continuous use, store undiluted antibody at 2-8°C for up to a week. For long-term storage, aliquot and store at -20°C. Storage in frost free freezers is not recommended. Avoid repeated freeze/thaw cycles. Suggest spin the vial prior to opening. The antibody solution should be gently mixed before use.
Note	For laboratory research only, not for drug, diagnostic or other use.

Bioinformation

Gene Symbol	IGFBP5
Gene Full Name	insulin-like growth factor binding protein 5
Background	Enables insulin-like growth factor I binding activity. Involved in several processes, including cellular response to cAMP; regulation of smooth muscle cell migration; and regulation of smooth muscle cell proliferation. Part of insulin-like growth factor ternary complex. Biomarker of pulmonary fibrosis. [provided by Alliance of Genome Resources, Apr 2022]
Function	IGF-binding proteins prolong the half-life of the IGFs and have been shown to either inhibit or stimulate the growth promoting effects of the IGFs on cell culture. They alter the interaction of IGFs with their cell surface receptors. [UniProt]
Calculated Mw	31 kDa
PTM	Disulfide bond; Glycoprotein; Phosphoprotein
Cellular Localization	Secreted

Images



ARG43812 anti-IGFBP5 antibody WB image

Western blot: 25 µg of U2OS cell lysate stained with ARG43812 anti-IGFBP5 antibody at 1:1000 dilution.