

ARG43810 anti-UTRN / Utrophin antibody

Package: 50 µg
Store at: -20°C

Summary

Product Description	Rabbit Polyclonal antibody recognizes UTRN / Utrophin
Tested Reactivity	Hu, Ms
Tested Application	WB
Host	Rabbit
Clonality	Polyclonal
Isotype	IgG
Target Name	UTRN / Utrophin
Species	Human
Immunogen	Recombinant protein corresponding to a.a. L1211-K2294 of Human UTRN / Utrophin.
Conjugation	Un-conjugated
Alternate Names	Utrophin; DRP1; DMDL; DRP; Dystrophin-Related Protein; Utrophin (Homologous To Dystrophin); DRP-1

Application Instructions

Application table	Application	Dilution
	WB	1:1000 - 1:2000
Application Note	IHC-P: Antigen retrieval: boil tissue sections in 1mM EDTA (pH 9.0) for 20 min and allow samples to cool to RT before staining. * The dilutions indicate recommended starting dilutions and the optimal dilutions or concentrations should be determined by the scientist.	

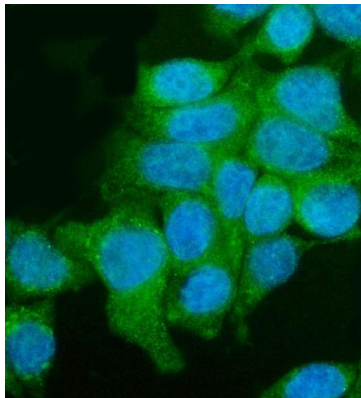
Properties

Form	Liquid
Purification	Affinity purification with immunogen.
Buffer	0.2% Na ₂ HPO ₄ , 0.9% NaCl and 4% Trehalose.
Stabilizer	4% Trehalose
Concentration	0.5 mg/ml
Storage instruction	For continuous use, store undiluted antibody at 2-8°C for up to a week. For long-term storage, aliquot and store at -20°C. Storage in frost free freezers is not recommended. Avoid repeated freeze/thaw cycles. Suggest spin the vial prior to opening. The antibody solution should be gently mixed before use.
Note	For laboratory research only, not for drug, diagnostic or other use.

Bioinformation

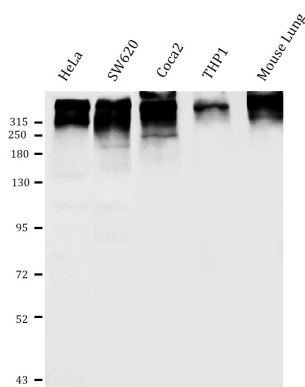
Gene Symbol	UTRN
Gene Full Name	utrophin
Background	This gene shares both structural and functional similarities with the dystrophin gene. It contains an actin-binding N-terminus, a triple coiled-coil repeat central region, and a C-terminus that consists of protein-protein interaction motifs which interact with dystroglycan protein components. The protein encoded by this gene is located at the neuromuscular synapse and myotendinous junctions, where it participates in post-synaptic membrane maintenance and acetylcholine receptor clustering. Mouse studies suggest that this gene may serve as a functional substitute for the dystrophin gene and therefore, may serve as a potential therapeutic alternative to muscular dystrophy which is caused by mutations in the dystrophin gene. Alternative splicing of the utrophin gene has been described; however, the full-length nature of these variants has not yet been determined. [provided by RefSeq, Jul 2008]
Function	May play a role in anchoring the cytoskeleton to the plasma membrane. [UniProt]
Calculated Mw	395 kDa
PTM	Phosphoprotein; Showing features for chain, modified residue. [UniProt]
Cellular Localization	Cell membrane; Cytoplasm; Cytoskeleton; Membrane; Postsynaptic cell membrane; Synapse. [UniProt]

Images



ARG43810 anti-UTRN / Utrophin antibody ICC/IF image

Immunofluorescence: Caco2 cells were stained with ARG43810 anti-UTRN / Utrophin antibody (green) at 1:100 dilution at 4°C for overnight. DAPI (blue) was used for nuclear staining.



ARG43810 anti-UTRN / Utrophin antibody WB image

Western blot: 1) HeLa cell lysates, 2) human Sw620 whole cell lysates, 3) human Caco-2 whole cell lysates, 4) human THP-1 whole cell lysates, 5) mouse lung tissue lysates stained with ARG43810 anti-UTRN / Utrophin antibody.