

ARG43799 anti-KMT4 / Dot1L antibody

Package: 100 µl
Store at: -20°C

Summary

Product Description	Rabbit Polyclonal antibody recognizes KMT4 / Dot1L
Tested Reactivity	Hu, Ms
Tested Application	IHC-P, WB
Host	Rabbit
Clonality	Polyclonal
Isotype	IgG
Target Name	KMT4 / Dot1L
Species	Human
Immunogen	Recombinant fusion protein corresponding to Human KMT4 / Dot1L.
Conjugation	Un-conjugated
Alternate Names	KMT4; DOT1; Histone-lysine N-methyltransferase, H3 lysine-79 specific; H3-K79-HMTase; DOT1-like protein; Lysine N-methyltransferase 4; EC 2.1.1.43; Histone H3-K79 methyltransferase

Application Instructions

Application table	Application	Dilution
	IHC-P	1:50 - 1:100
	WB	1:500 - 1:1000
Application Note	* The dilutions indicate recommended starting dilutions and the optimal dilutions or concentrations should be determined by the scientist.	
Positive Control	HeLa; Mouse testis	
Observed Size	~180 kDa	

Properties

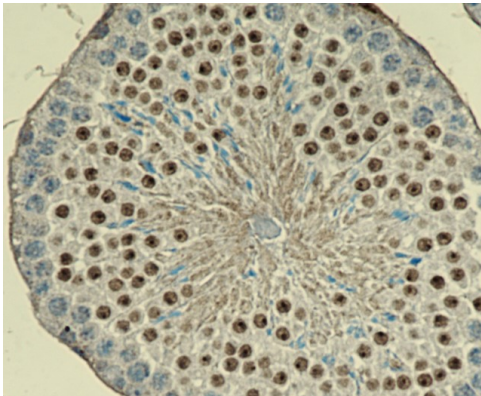
Form	Liquid
Purification	Affinity purified.
Buffer	50 mM Tris-Glycine (pH 7.4), 150 mM NaCl, 0.01% Sodium azide, 40% Glycerol and 0.05% BSA.
Preservative	0.01% Sodium azide
Stabilizer	40% Glycerol and 0.05% BSA
Concentration	Batch dependent
Storage instruction	For continuous use, store undiluted antibody at 2-8°C for up to a week. For long-term storage, aliquot and store at -20°C. Storage in frost free freezers is not recommended. Avoid repeated freeze/thaw cycles. Suggest spin the vial prior to opening. The antibody solution should be gently mixed before use.

Note For laboratory research only, not for drug, diagnostic or other use.

Bioinformation

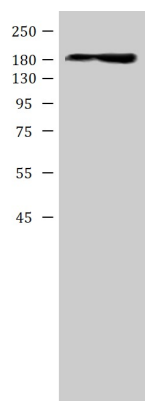
Gene Symbol	DOT1L
Gene Full Name	DOT1-like histone H3K79 methyltransferase
Background	The protein encoded by this gene is a histone methyltransferase that methylates lysine-79 of histone H3. It is inactive against free core histones, but shows significant histone methyltransferase activity against nucleosomes. [provided by RefSeq, Aug 2011]
Function	Histone methyltransferase. Methylates 'Lys-79' of histone H3. Nucleosomes are preferred as substrate compared to free histones. Binds to DNA. [UniProt]
Calculated Mw	165 kDa
PTM	Phosphoprotein
Cellular Localization	Nucleus. [UniProt]

Images



ARG43799 anti-KMT4 / Dot1L antibody IHC-P image

Immunohistochemistry: Paraffin-embedded Mouse testis tissue stained with ARG43799 anti-KMT4 / Dot1L antibody.



ARG43799 anti-KMT4 / Dot1L antibody WB image

Western blot: 25 µg of HeLa cells stained with ARG43799 anti-KMT4 / Dot1L antibody at 1:1000 dilution.



ARG43799 anti-KMT4 / Dot1L antibody WB image

Western blot: 25 µg of Raw263.7 cell lysate stained with ARG43799 anti-KMT4 / Dot1L antibody at 1:1000 dilution.