

## ARG43790 anti-Glucagon antibody

Package: 50 µg  
Store at: -20°C

### Summary

Product Description	Rabbit Polyclonal antibody recognizes Glucagon
Tested Reactivity	Hu
Tested Application	WB
Specificity	The antibody reacts proglucagon only, and it can't react to Glicentin, Oxyntomodulin, active Glucagon, GLP1 and GLP2.
Host	Rabbit
Clonality	Polyclonal
Isotype	IgG
Target Name	Glucagon
Species	Human
Immunogen	Synthetic peptide corresponding to human glucagon (HSQGTFTSDYSKYLDSSRAQDFVQWLMNT).
Conjugation	Un-conjugated
Alternate Names	GLP-1; GLP-2; GLP1; OXY; GLP2; Glucagon; OXM; 7-37; 7-36; Incretin hormone; GRPP

### Application Instructions

Application table	<table><thead><tr><th>Application</th><th>Dilution</th></tr></thead><tbody><tr><td>WB</td><td></td></tr></tbody></table>	Application	Dilution	WB	
Application	Dilution				
WB					
Application Note	* The dilutions indicate recommended starting dilutions and the optimal dilutions or concentrations should be determined by the scientist.				
Positive Control	Human Pancreas; Mouse Pancreas; Rat Pancreas				

### Properties

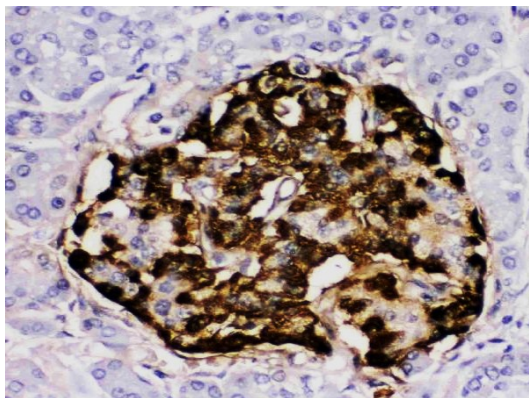
Form	Liquid
Purification	Affinity purification with immunogen.
Buffer	0.9% NaCl, 0.2% Na <sub>2</sub> HPO <sub>4</sub> , 0.05% Sodium azide and 5% BSA.
Preservative	0.05% Sodium azide
Stabilizer	5% BSA
Concentration	0.5 mg/ml
Storage instruction	For continuous use, store undiluted antibody at 2-8°C for up to a week. For long-term storage, aliquot and store at -20°C or below. Storage in frost free freezers is not recommended. Avoid repeated freeze/thaw cycles. Suggest spin the vial prior to opening. The antibody solution should be gently mixed before use.

Note For laboratory research only, not for drug, diagnostic or other use.

## Bioinformation

---

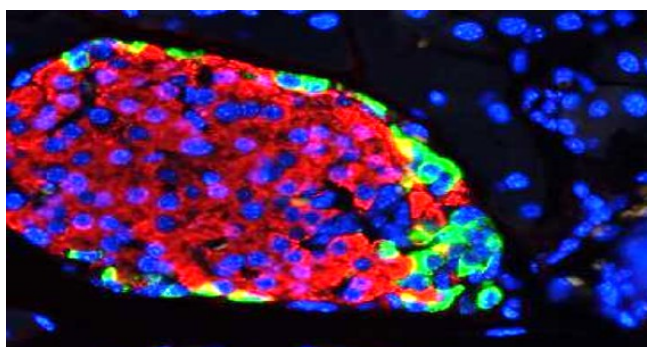
Gene Symbol	GCG
Gene Full Name	glucagon
Background	<p>The protein encoded by this gene is actually a preproprotein that is cleaved into four distinct mature peptides. One of these, glucagon, is a pancreatic hormone that counteracts the glucose-lowering action of insulin by stimulating glycogenolysis and gluconeogenesis. Glucagon is a ligand for a specific G-protein linked receptor whose signalling pathway controls cell proliferation. Two of the other peptides are secreted from gut endocrine cells and promote nutrient absorption through distinct mechanisms. Finally, the fourth peptide is similar to glicentin, an active enteroglucagon. [provided by RefSeq, Jul 2008]</p>
Function	<p>Glucagon plays a key role in glucose metabolism and homeostasis. Regulates blood glucose by increasing gluconeogenesis and decreasing glycolysis. A counterregulatory hormone of insulin, raises plasma glucose levels in response to insulin-induced hypoglycemia. Plays an important role in initiating and maintaining hyperglycemic conditions in diabetes.</p> <p>GLP-1 is a potent stimulator of glucose-dependent insulin release. Play important roles on gastric motility and the suppression of plasma glucagon levels. May be involved in the suppression of satiety and stimulation of glucose disposal in peripheral tissues, independent of the actions of insulin. Have growth-promoting activities on intestinal epithelium. May also regulate the hypothalamic pituitary axis (HPA) via effects on LH, TSH, CRH, oxytocin, and vasopressin secretion. Increases islet mass through stimulation of islet neogenesis and pancreatic beta cell proliferation. Inhibits beta cell apoptosis.</p> <p>GLP-2 stimulates intestinal growth and up-regulates villus height in the small intestine, concomitant with increased crypt cell proliferation and decreased enterocyte apoptosis. The gastrointestinal tract, from the stomach to the colon is the principal target for GLP-2 action. Plays a key role in nutrient homeostasis, enhancing nutrient assimilation through enhanced gastrointestinal function, as well as increasing nutrient disposal. Stimulates intestinal glucose transport and decreases mucosal permeability.</p> <p>Oxyntomodulin significantly reduces food intake. Inhibits gastric emptying in humans. Suppression of gastric emptying may lead to increased gastric distension, which may contribute to satiety by causing a sensation of fullness.</p> <p>Glicentin may modulate gastric acid secretion and the gastro-pyloro-duodenal activity. May play an important role in intestinal mucosal growth in the early period of life. [UniProt]</p>
Calculated Mw	21 kDa
PTM	<p>Proglucagon is post-translationally processed in a tissue-specific manner in pancreatic A cells and intestinal L cells. In pancreatic A cells, the major bioactive hormone is glucagon cleaved by PCSK2/PC2. In the intestinal L cells PCSK1/PC1 liberates GLP-1, GLP-2, glicentin and oxyntomodulin. GLP-1 is further N-terminally truncated by post-translational processing in the intestinal L cells resulting in GLP-1(7-37) GLP-1-(7-36)amide. The C-terminal amidation is neither important for the metabolism of GLP-1 nor for its effects on the endocrine pancreas.</p>
Cellular Localization	Secreted.



ARG43790 anti-Glucagon antibody IHC-P image

Immunohistochemistry: Formalin-fixed and paraffin-embedded human pancreatic cancer tissues stained with ARG43790 anti-Glucagon antibody.

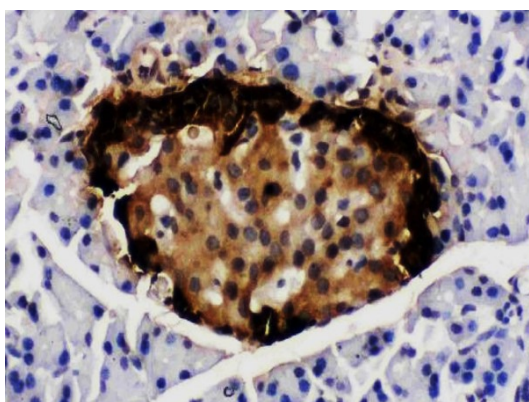
---



ARG43790 anti-Glucagon antibody ICC/IF image

Immunofluorescence: Mouse pancreas tissues were fixed with 4% paraformaldehyde for 30 min at RT, stained with ARG43790 anti-Glucagon antibody IHC-P image at 1:100.

---



ARG43790 anti-Glucagon antibody IHC-P image

Immunohistochemistry: Formalin-fixed and paraffin-embedded rat pancreas tissues stained with ARG43790 anti-Glucagon antibody.

---