

## ARG43764 anti-LRRK2 antibody

Package: 100 µl  
Store at: -20°C

### Summary

Product Description	Rabbit Polyclonal antibody recognizes LRRK2
Tested Reactivity	Hu, Ms, Rat
Tested Application	ICC/IF, IHC-P, WB
Host	Rabbit
Clonality	Polyclonal
Isotype	IgG
Target Name	LRRK2
Species	Human
Immunogen	Synthetic peptide corresponding to Human LRRK2.
Conjugation	Un-conjugated
Alternate Names	PARK8; RIPK7; ROCO2; AURA17; DARDARIN; Leucine-rich repeat serine/threonine-protein kinase 2; Parkinson Disease (Autosomal Dominant) 8; Augmented In Rheumatoid Arthritis 17

### Application Instructions

Application table	Application	Dilution
	ICC/IF	1:50 - 1:200
	IHC-P	1:50 - 1:100
	WB	1:500 - 1:1000

**Application Note** \* The dilutions indicate recommended starting dilutions and the optimal dilutions or concentrations should be determined by the scientist.

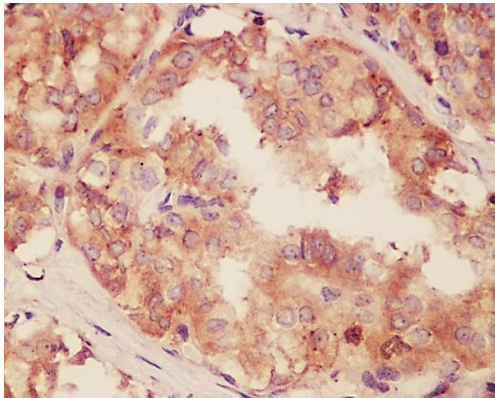
### Properties

Form	Liquid
Purification	Affinity Purified
Buffer	50 mM Tris-Glycine (pH 7.4), 0.15M NaCl, 0.05% BSA, 40% Glycerol and 0.01% Sodium azide.
Preservative	0.01% Sodium azide
Stabilizer	0.05% BSA and 40% Glycerol
Storage instruction	For continuous use, store undiluted antibody at 2-8°C for up to a week. For long-term storage, aliquot and store at -20°C or below. Storage in frost free freezers is not recommended. Avoid repeated freeze/thaw cycles. Suggest spin the vial prior to opening. The antibody solution should be gently mixed before use.
Note	For laboratory research only, not for drug, diagnostic or other use.

## Bioinformation

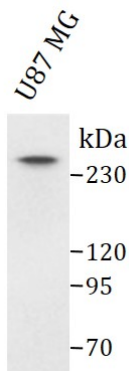
Gene Symbol	LRRK2
Gene Full Name	leucine rich repeat kinase 2
Background	This gene is a member of the leucine-rich repeat kinase family and encodes a protein with an ankryin repeat region, a leucine-rich repeat (LRR) domain, a kinase domain, a DFG-like motif, a RAS domain, a GTPase domain, a MLK-like domain, and a WD40 domain. The protein is present largely in the cytoplasm but also associates with the mitochondrial outer membrane. Mutations in this gene have been associated with Parkinson disease-8. [provided by RefSeq, Jul 2008]
Function	LRRK2 (Leucine Rich Repeat Kinase 2) is a Protein Coding gene. Diseases associated with LRRK2 include Parkinson Disease 8, Autosomal Dominant and Hereditary Late-Onset Parkinson Disease. Among its related pathways are Signaling by PTK6 and ncRNAs involved in Wnt signaling in hepatocellular carcinoma. Gene Ontology (GO) annotations related to this gene include protein homodimerization activity and transferase activity, transferring phosphorus-containing groups. An important paralog of this gene is BRAF. [GeneCard]
Calculated Mw	286 kDa
PTM	Phosphoprotein
Cellular Localization	Cell projection; Cytoplasmic vesicle; Endoplasmic reticulum; Endosome; Golgi apparatus; Lysosome; Membrane; Mitochondrion; Mitochondrion outer membrane; Synapse

## Images



ARG43764 anti-LRRK2 antibody IHC-P image

Immunohistochemistry: Formalin-fixed and paraffin-embedded Human thyroid stained with ARG43764 anti-LRRK2 antibody at 1:100 dilution. Antigen Retrieval: Heat mediated was performed using sodium citrate buffer (pH 6.0).



ARG43764 anti-LRRK2 antibody WB image

Western blot: U87 MG cell lysate stained with ARG43764 anti-LRRK2 antibody at 1:1000 dilution.