

ARG43756 anti-Prominin 1 antibody

Package: 50 µg
Store at: -20°C

Summary

Product Description	Rabbit Polyclonal antibody recognizes Prominin 1
Tested Reactivity	Hu
Tested Application	FACS, IHC-P, WB
Host	Rabbit
Clonality	Polyclonal
Isotype	IgG
Target Name	Prominin 1
Species	Human
Immunogen	Recombinant protein corresponding to a.a. P531 - H865 of Human Prominin-1
Conjugation	Un-conjugated
Alternate Names	CORD12; CD133; RP41; Antigen AC133; MCDR2; CD antigen CD133; PROML1; AC133; Prominin-like protein 1; Prominin-1; MSTP061; STGD4

Application Instructions

Application table	Application	Dilution
	FACS	1 - 3 µg/10 ⁶ cells
	IHC-P	1:100 - 1:1000
	WB	1:1000 - 1:3000
Application Note	* The dilutions indicate recommended starting dilutions and the optimal dilutions or concentrations should be determined by the scientist.	
Observed Size	100~120 kDa	

Properties

Form	Liquid
Purification	Affinity purification with immunogen.
Buffer	0.9% NaCl, 0.2% Na ₂ HPO ₄ , 0.05% Sodium azide and 5% BSA.
Preservative	0.05% Sodium azide
Stabilizer	5% BSA
Concentration	0.5 mg/ml
Storage instruction	For continuous use, store undiluted antibody at 2-8°C for up to a week. For long-term storage, aliquot and store at -20°C. Storage in frost free freezers is not recommended. Avoid repeated freeze/thaw cycles. Suggest spin the vial prior to opening. The antibody solution should be gently mixed before use.

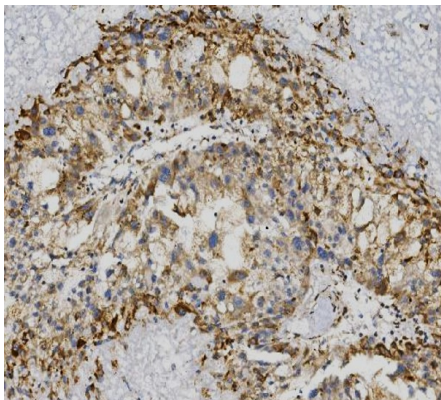
Note

For laboratory research only, not for drug, diagnostic or other use.

Bioinformation

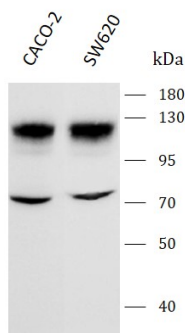
Gene Symbol	PROM1
Gene Full Name	prominin 1
Background	This gene encodes a pentaspan transmembrane glycoprotein. The protein localizes to membrane protrusions and is often expressed on adult stem cells, where it is thought to function in maintaining stem cell properties by suppressing differentiation. Mutations in this gene have been shown to result in retinitis pigmentosa and Stargardt disease. Expression of this gene is also associated with several types of cancer. This gene is expressed from at least five alternative promoters that are expressed in a tissue-dependent manner. Multiple transcript variants encoding different isoforms have been found for this gene. [provided by RefSeq, Mar 2009]
Function	May play a role in cell differentiation, proliferation and apoptosis. Binds cholesterol in cholesterol-containing plasma membrane microdomains and may play a role in the organization of the apical plasma membrane in epithelial cells. During early retinal development acts as a key regulator of disk morphogenesis. Involved in regulation of MAPK and Akt signaling pathways. In neuroblastoma cells suppresses cell differentiation such as neurite outgrowth in a RET-dependent manner. [UniProt]
Calculated Mw	97 kDa
PTM	Isoform 1 and isoform 2 are glycosylated. Acetylation at Lys-225, Lys-257 and Lys-264 by NAT8 and NAT8B may control PROM1 protein expression and its function in cell apoptosis.

Images



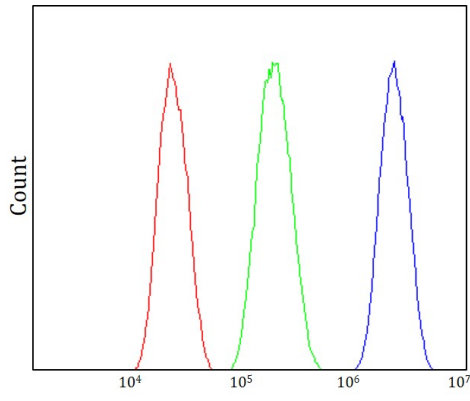
ARG43756 anti-Prominin 1 antibody IHC-P image

Immunohistochemistry: Human liver cancer stained with ARG43756 anti-Prominin 1 antibody at 1 μ g/ml dilution.



ARG43756 anti-Prominin 1 antibody WB image

Western blot: CACO-2 and SW620 stained with ARG43756 anti-Prominin 1 antibody at 0.5 μ g/mL dilution.



ARG43756 anti-Prominin 1 antibody FACS image

Flow Cytometry: CACO-2 stained with ARG43756 anti-Prominin 1 antibody at $1 \mu\text{g} / 10^6$ cells dilution.