

ARG43754
anti-EEA1 antibodyPackage: 50 µg
Store at: -20°C

Summary

Product Description	Rabbit Polyclonal antibody recognizes EEA1
Tested Reactivity	Hu, Ms, Rat
Tested Application	FACS, ICC/IF, WB
Host	Rabbit
Clonality	Polyclonal
Isotype	IgG
Target Name	EEA1
Species	Human
Immunogen	Synthetic peptide corresponding to Human EEA1.
Conjugation	Un-conjugated
Alternate Names	Early endosome antigen 1; Zinc finger FYVE domain-containing protein 2; MST105; MSTP105; ZFYVE2; Endosome-associated protein p162

Application Instructions

Application table	Application	Dilution
	FACS	1 - 3 µg/10 ⁶ cells
	ICC/IF	1:50 - 1:200
	WB	1:500 - 1:2000
Application Note	* The dilutions indicate recommended starting dilutions and the optimal dilutions or concentrations should be determined by the scientist.	
Positive Control	HeLa, Placenta, Brain, Spleen, A431	
Observed Size	~170 kDa	

Properties

Form	Liquid
Purification	Affinity purification with immunogen.
Buffer	0.9% NaCl, 0.2% Na ₂ HPO ₄ and 0.05% Sodium azide
Preservative	0.05% Sodium azide
Concentration	0.5 mg/ml
Storage instruction	For continuous use, store undiluted antibody at 2-8°C for up to a week. For long-term storage, aliquot and store at -20°C. Storage in frost free freezers is not recommended. Avoid repeated freeze/thaw cycles. Suggest spin the vial prior to opening. The antibody solution should be gently mixed before use.

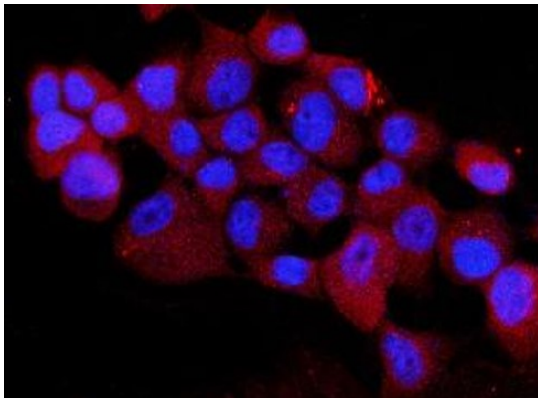
Note

For laboratory research only, not for drug, diagnostic or other use.

Bioinformation

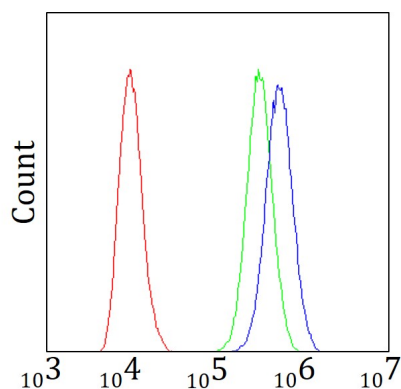
Gene Symbol	EEA1
Gene Full Name	early endosome antigen 1
Background	Enables 1-phosphatidylinositol binding activity; GTP-dependent protein binding activity; and protein homodimerization activity. Involved in endocytosis; vesicle fusion; and viral RNA genome replication. Located in cytosol and early endosome. Is extrinsic component of plasma membrane. [provided by Alliance of Genome Resources, Apr 2022]
Function	Binds phospholipid vesicles containing phosphatidylinositol 3-phosphate and participates in endosomal trafficking. [UniProt]
Calculated Mw	162 kDa
Cellular Localization	Cytoplasm. Early endosome membrane; Peripheral membrane protein. [UniProt]

Images



ARG43754 anti-EEA1 antibody ICC/IF image

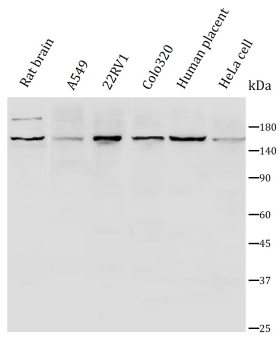
Immunofluorescence: A431 cells were stained with ARG43754 anti-EEA1 antibody (red) at 1:100 dilution at 4°C for overnight. DAPI (blue) was used for nuclear staining.



ARG43754 anti-EEA1 antibody FACS image

Flow Cytometry: A431 cells were blocked with 10% normal goat serum and stained with ARG43754 anti-EEA1 antibody (blue) at 1 µg/10⁶ cells for 30 min at 20°C, followed by incubation with DyLight®488 labelled secondary antibody. Isotype control antibody (green) was rabbit IgG (1 µg/10⁶ cells) used under the same conditions. Unlabelled sample (red) was also used as a control.

ARG43754 anti-EEA1 antibody WB image



Western blot: 1) Rat brain tissue lysates, 2) Human A549 cell lysates, 3) Human 22RV1 cell lysates, 4) Human Colo320 cell lysates, 5) Human placenta tissue lysates, 6) HeLa cell lysates, stained with ARG43754 anti-EEA1 antibody at 1:1000 dilution, overnight at 4°C.