

ARG43742 anti-TMEM176B / LR8 antibody

Package: 50 µl
Store at: -20°C

Summary

| | |
|---------------------|--|
| Product Description | Rabbit Polyclonal antibody recognizes TMEM176B / LR8 |
| Tested Reactivity | Hu |
| Predict Reactivity | Cow, Dog, Hrs, Pig |
| Tested Application | WB |
| Host | Rabbit |
| Clonality | Polyclonal |
| Isotype | IgG |
| Target Name | TMEM176B / LR8 |
| Species | Human |
| Immunogen | Synthetic peptide around the C-terminal region of Human TMEM176B / LR8. (within the following region: SLVSL GVGLR NLGGQ SSQPL NEEGS EKRLG GENSV PPSPS REQTS TAIVL) |
| Conjugation | Un-conjugated |
| Alternate Names | LR8; MS4B2; Transmembrane protein 176B; TMEM176B |

Application Instructions

| Predict Reactivity Note | Predicted Homology Based On Immunogen Sequence: Cow: 85%; Dog: 85%; Horse: 85%; Pig: 85%; | | | | |
|-------------------------|--|-------------|----------|----|----------------|
| Application table | <table><thead><tr><th>Application</th><th>Dilution</th></tr></thead><tbody><tr><td>WB</td><td>1:500 - 1:2000</td></tr></tbody></table> | Application | Dilution | WB | 1:500 - 1:2000 |
| Application | Dilution | | | | |
| WB | 1:500 - 1:2000 | | | | |
| Application Note | * The dilutions indicate recommended starting dilutions and the optimal dilutions or concentrations should be determined by the scientist. | | | | |
| Positive Control | OVCAR-3 | | | | |
| Observed Size | ~ 32 kDa | | | | |

Properties

| | |
|---------------------|---|
| Form | Liquid |
| Purification | Affinity purified. |
| Buffer | PBS, 0.09% (w/v) Sodium azide and 2% Sucrose. |
| Preservative | 0.09% (w/v) Sodium azide |
| Stabilizer | 2% Sucrose |
| Concentration | Batch dependent: 0.5 - 1 mg/ml |
| Storage instruction | For continuous use, store undiluted antibody at 2-8°C for up to a week. For long-term storage, aliquot and store at -20°C or below. Storage in frost free freezers is not recommended. Avoid repeated |

freeze/thaw cycles. Suggest spin the vial prior to opening. The antibody solution should be gently mixed before use.

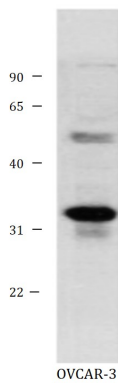
Note

For laboratory research only, not for drug, diagnostic or other use.

Bioinformation

| | |
|-----------------------|--|
| Gene Symbol | TMEM176B |
| Gene Full Name | transmembrane protein 176B |
| Background | Predicted to be involved in negative regulation of dendritic cell differentiation. Predicted to be located in nuclear membrane. Predicted to be integral component of membrane. [provided by Alliance of Genome Resources, Apr 2022] |
| Function | May play a role in the process of maturation of dendritic cells. Required for the development of cerebellar granule cells (By similarity). [UniProt] |
| Calculated Mw | 25.3, 29 kDa |
| PTM | Phosphoprotein |
| Cellular Localization | Membrane, Nucleus. [UniProt] |

Images



ARG43742 anti-TMEM176B / LR8 antibody WB image

Western blot: OVCAR-3 cell lysate stained with ARG43742 anti-TMEM176B / LR8 antibody.