

ARG43741 anti-MT ND4L antibody

Package: 100 µl
Store at: -20°C

Summary

Product Description	Rabbit Polyclonal antibody recognizes MT ND4L
Tested Reactivity	Hu
Predict Reactivity	Mk
Tested Application	FACS, WB
Host	Rabbit
Clonality	Polyclonal
Isotype	IgG
Target Name	MT-ND4L
Species	Human
Immunogen	KLH-conjugated synthetic peptide corresponding to aa. 60-98 (C-terminus) of Human MT ND4L.
Conjugation	Un-conjugated
Alternate Names	MTND4L; ND4L; NADH-ubiquinone oxidoreductase chain 4L; NADH dehydrogenase subunit 4L; MT-ND4L; NADH4L

Application Instructions

Application table	Application	Dilution
	FACS	1:15 - 1:30
	WB	1:500 - 1:2000
Application Note	* The dilutions indicate recommended starting dilutions and the optimal dilutions or concentrations should be determined by the scientist.	
Positive Control	HL-60	
Observed Size	~ 14 kDa	

Properties

Form	Liquid
Purification	Purification with Protein A and immunogen peptide.
Buffer	PBS and 0.09% (W/V) Sodium azide
Preservative	0.09% (W/V) Sodium azide
Storage instruction	For continuous use, store undiluted antibody at 2-8°C for up to a week. For long-term storage, aliquot and store at -20°C or below. Storage in frost free freezers is not recommended. Avoid repeated freeze/thaw cycles. Suggest spin the vial prior to opening. The antibody solution should be gently mixed before use.

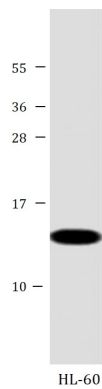
Note

For laboratory research only, not for drug, diagnostic or other use.

Bioinformation

Gene Symbol	MT-ND4L
Gene Full Name	mitochondrially encoded NADH 4L dehydrogenase
Background	Predicted to enable NADH dehydrogenase (ubiquinone) activity. Predicted to be located in mitochondrial inner membrane. Implicated in Leber hereditary optic neuropathy and diabetes mellitus. [provided by Alliance of Genome Resources, Apr 2022]
Function	Core subunit of the mitochondrial membrane respiratory chain NADH dehydrogenase (Complex I) which catalyzes electron transfer from NADH through the respiratory chain, using ubiquinone as an electron acceptor.. [UniProt]
Calculated Mw	10.7 kDa
Cellular Localization	Membrane, Mitochondrion, Mitochondrion inner membrane

Images



ARG43741 anti-MT ND4L antibody WB image

Western blot: 35 µg of HL-60 cell lysate stained with ARG43741 anti-MT ND4L antibody.