

## ARG43731 anti-SARS-CoV-2 ORF10 antibody

Package: 100 µg  
Store at: -20°C

### Summary

Product Description	Rabbit Polyclonal antibody recognizes SARS-CoV-2 ORF10
Tested Reactivity	Virus
Tested Application	ELISA
Specificity	ORF10 Antibody is predicted to not cross-react with other coronavirus family members.
Host	Rabbit
Clonality	Polyclonal
Isotype	IgG
Target Name	SARS-CoV-2 ORF10
Species	Virus
Immunogen	Synthetic peptide corresponding to 13 amino acids near the carboxyl terminus of SARS-CoV-2 (COVID-19) ORF10 protein.  The immunogen is located within the last 50 amino acids of the SARS-CoV-2 (COVID-19) ORF10 protein.
Conjugation	Un-conjugated
Alternate Names	ORF10 protein, ORF10

### Application Instructions

Application table	Application	Dilution
	ELISA	detect 2 ng of free peptide at 1 µg/mL
Application Note	* The dilutions indicate recommended starting dilutions and the optimal dilutions or concentrations should be determined by the scientist.	

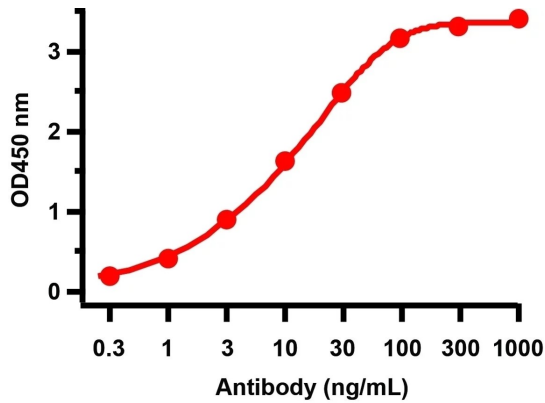
### Properties

Form	Liquid
Purification	Affinity purification with immunogen.
Buffer	PBS and 0.02% Sodium azide.
Preservative	0.02% Sodium azide
Concentration	1 mg/ml
Storage instruction	For continuous use, store undiluted antibody at 2-8°C for up to a week. For long-term storage, aliquot and store at -20°C or below. Storage in frost free freezers is not recommended. Avoid repeated freeze/thaw cycles. Suggest spin the vial prior to opening. The antibody solution should be gently mixed before use.
Note	For laboratory research only, not for drug, diagnostic or other use.

## Bioinformation

Gene Symbol	ORF10
Gene Full Name	SARS-CoV-2 ORF10
Background	Coronavirus disease 2019 (COVID-19), formerly known as 2019-nCoV acute respiratory disease, is an infectious disease caused by SARS-CoV-2, a virus closely related to the SARS virus. The disease is the cause of the 2019–20 coronavirus outbreak. SARS-CoV-2 virus proteins include structural proteins, non-structural proteins and accessory factors. The structure of SARS-CoV-2 consists of the following: a spike protein (S), hemagglutinin-esterase dimer (HE), a membrane glycoprotein (M), an envelope protein (E) a nucleocapsid protein (N) and RNA. SARS-CoV-2 non-structural protein is ORF1ab that consists of 16 proteins (nsp1-nsp16), while accessory factors include ORF3a, ORF3b, ORF6, ORF7a, ORF7b, ORF8, ORF9b, ORF10 and ORF10.
Highlight	Related products: <a href="#">SARS-CoV antibodies</a> ; <a href="#">SARS-CoV ELISA Kits</a> ; <a href="#">SARS-CoV recombinant proteins</a> ; <a href="#">Anti-Rabbit IgG secondary antibodies</a> ; Related news: <a href="#">HMGB1, a biomarker and therapeutic target in COVID-19</a>

## Images



ARG43731 anti-SARS-CoV-2 ORF10 antibody ELISA image

Direct ELISA: SARS-CoV-2 ORF10 immunogen peptide was coated on the plate and ARG43731 anti-SARS-CoV-2 ORF10 antibody was used as the capture antibody. Secondary: Goat anti-rabbit IgG HRP conjugate at 1:20000 dilution. Detection range is from 0.3 ng/mL to 1000 ng/mL