

ARG43711 anti-Lrp2 / Megalin antibody

Package: 50 µl
Store at: -20°C

Summary

| | |
|---------------------|---|
| Product Description | Rabbit Polyclonal antibody recognizes Lrp2 / Megalin |
| Tested Reactivity | Ms |
| Tested Application | IHC-P |
| Host | Rabbit |
| Clonality | Polyclonal |
| Isotype | IgG |
| Target Name | Lrp2 / Megalin |
| Species | Human |
| Immunogen | Synthetic peptide derived from Human Lrp2 / Megalin. |
| Conjugation | Un-conjugated |
| Alternate Names | GP330; gp330; Glycoprotein 330; LRP-2; Megalin; Low-density lipoprotein receptor-related protein 2; DBS |

Application Instructions

| Application table | <table><thead><tr><th>Application</th><th>Dilution</th></tr></thead><tbody><tr><td>IHC-P</td><td>1:50 - 1:200</td></tr></tbody></table> | Application | Dilution | IHC-P | 1:50 - 1:200 |
|-------------------|--|-------------|----------|-------|--------------|
| Application | Dilution | | | | |
| IHC-P | 1:50 - 1:200 | | | | |
| Application Note | * The dilutions indicate recommended starting dilutions and the optimal dilutions or concentrations should be determined by the scientist. | | | | |
| Positive Control | Mouse Brain | | | | |

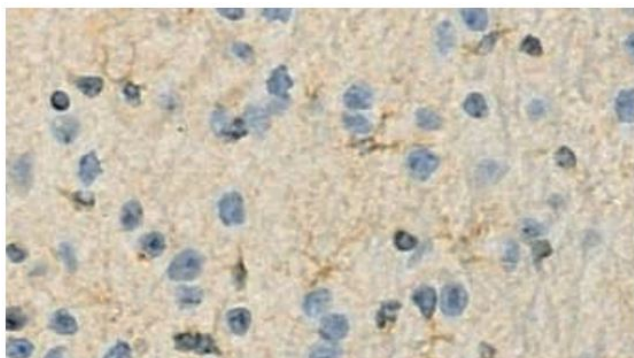
Properties

| | |
|---------------------|---|
| Form | Liquid |
| Purification | Affinity purified. |
| Buffer | PBS (pH 7.4), 150 mM NaCl, 0.02% Sodium azide and 50% Glycerol. |
| Preservative | 0.02% Sodium azide |
| Stabilizer | 50% Glycerol |
| Storage instruction | For continuous use, store undiluted antibody at 2-8°C for up to a week. For long-term storage, aliquot and store at -20°C. Storage in frost free freezers is not recommended. Avoid repeated freeze/thaw cycles. Suggest spin the vial prior to opening. The antibody solution should be gently mixed before use. |
| Note | For laboratory research only, not for drug, diagnostic or other use. |

Bioinformation

| | |
|-----------------------|--|
| Gene Symbol | LRP2 |
| Gene Full Name | low density lipoprotein receptor-related protein 2 |
| Background | The protein encoded by this gene, low density lipoprotein-related protein 2 (LRP2) or megalin, is a multi-ligand endocytic receptor that is expressed in many different tissues but primarily in absorptive epithelial tissues such as the kidney. This glycoprotein has a large amino-terminal extracellular domain, a single transmembrane domain, and a short carboxy-terminal cytoplasmic tail. The extracellular ligand-binding-domains bind diverse macromolecules including albumin, apolipoproteins B and E, and lipoprotein lipase. The LRP2 protein is critical for the reuptake of numerous ligands, including lipoproteins, sterols, vitamin-binding proteins, and hormones. This protein also has a role in cell-signaling; extracellular ligands include parathyroid hormones and the morphogen sonic hedgehog while cytosolic ligands include MAP kinase scaffold proteins and JNK interacting proteins. Recycling of this membrane receptor is regulated by phosphorylation of its cytoplasmic domain. Mutations in this gene cause Donnai-Barrow syndrome (DBS) and facio-oculoacoustico-renal syndrome (FOAR).[provided by RefSeq, Aug 2009] |
| Function | Acts together with cubilin to mediate HDL endocytosis (By similarity). May participate in regulation of parathyroid-hormone and para-thyroid-hormone-related protein release. [UniProt] |
| Calculated Mw | 522 kDa |
| Cellular Localization | Apical cell membrane; Single-pass type I membrane protein. Endosome lumen. Membrane, coated pit. Cell projection, dendrite. Cell projection, axon. Note=Localizes to brush border membranes in the kidney. In the endolymphatic sac of the inner ear, located in the lumen of endosomes as a soluble form. [UniProt] |

Images



ARG43711 anti-Lrp2 / Megalin antibody IHC-P image

Immunohistochemistry: Paraffin-embedded Mouse brain stained with ARG43711 anti-Lrp2 / Megalin antibody at 1:100 dilution.