

## ARG43698 anti-CD273 / PD-L2 antibody

Package: 100 µl  
Store at: -20°C

### Summary

Product Description	Rabbit Polyclonal antibody recognizes CD273 / PD-L2
Tested Reactivity	Hu, Rat
Predict Reactivity	Ms
Tested Application	WB
Host	Rabbit
Clonality	Polyclonal
Isotype	IgG
Target Name	CD273 / PD-L2
Species	Human
Immunogen	Synthetic peptide corresponding to Human CD273/PD-L2.
Conjugation	Un-conjugated
Alternate Names	B7DC; bA574F11.2; PDL2; CD antigen CD273; PD-L2; Programmed cell death 1 ligand 2; CD273; Btdc; PDCD1L2; Programmed death ligand 2; Butyrophilin B7-DC; B7-DC; PD-1 ligand 2; PDCD1 ligand 2

### Application Instructions

Application table	Application	Dilution
	WB	1:500 - 1:1000
Application Note	* The dilutions indicate recommended starting dilutions and the optimal dilutions or concentrations should be determined by the scientist.	
Observed Size	~30 - 50 kDa	

### Properties

Form	Liquid
Purification	Affinity purified.
Buffer	50 mM Tris-Glycine (pH 7.4), 150 mM NaCl, 0.01% Sodium azide, 40% Glycerol and 0.05% BSA.
Preservative	0.01% Sodium azide
Stabilizer	40% Glycerol and 0.05% BSA
Concentration	Batch dependent
Storage instruction	For continuous use, store undiluted antibody at 2-8°C for up to a week. For long-term storage, aliquot and store at -20°C or below. Storage in frost free freezers is not recommended. Avoid repeated freeze/thaw cycles. Suggest spin the vial prior to opening. The antibody solution should be gently mixed before use.

Note

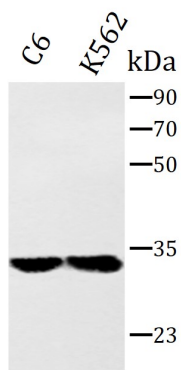
For laboratory research only, not for drug, diagnostic or other use.

## Bioinformation

---

Gene Symbol	PDCD1LG2
Gene Full Name	programmed cell death 1 ligand 2
Function	Involved in the costimulatory signal, essential for T-cell proliferation and IFNG production in a PDCD1-independent manner. Interaction with PDCD1 inhibits T-cell proliferation by blocking cell cycle progression and cytokine production (By similarity). [UniProt]
Highlight	Related products: <a href="#">PD-L2 antibodies</a> ; <a href="#">PD-L2 ELISA Kits</a> ; Related news: <a href="#">The best solution for PD-1/PD-L1 research</a>
Calculated Mw	31 kDa
PTM	Disulfide bond; Glycoprotein
Cellular Localization	Cell membrane; Membrane; Secreted

## Images



ARG43698 anti-CD273 / PD-L2 antibody WB image

Western blot: C6 and K562 cells stained with ARG43698 anti-CD273 / PD-L2 antibody at 1:1000 dilution.