

ARG43671
anti-CD50 / ICAM3 antibody [ICAM3/1019]Package: 50 µg
Store at: -20°C

Summary

Product Description	Mouse Monoclonal antibody [ICAM3/1019] recognizes CD50 / ICAM3
Tested Reactivity	Hu
Tested Application	IHC-P, WB
Host	Mouse
Clonality	Monoclonal
Clone	ICAM3/1019
Isotype	IgG2b, kappa
Target Name	CD50 / ICAM3
Species	Human
Immunogen	Recombinant protein corresponding to CD50 / ICAM3 antibody.
Conjugation	Un-conjugated
Alternate Names	CD50; CD antigen CD50; Intercellular adhesion molecule 3; ICAM-3; ICAM-R; CDw50; CDW50

Application Instructions

Application table	Application	Dilution
	IHC-P	1 - 2 µg/ml for 30 min at RT
	WB	1 - 2 µg/ml
Application Note	Antigen retrieval for IHC-P: Staining of formalin/paraffin tissues requires boiling tissue sections in 10mM Citrate buffer, pH 6.0, for 10-20 min followed by cooling at RT for 20 min. * The dilutions indicate recommended starting dilutions and the optimal dilutions or concentrations should be determined by the scientist.	
Observed Size	100-160 kDa	

Properties

Form	Liquid
Purification	Purification with Protein G.
Buffer	PBS (pH 7.4), 0.05% Sodium azide and 0.1 mg/ml BSA.
Preservative	0.05% Sodium azide
Stabilizer	0.1 mg/ml BSA
Concentration	0.2 mg/ml
Storage instruction	For continuous use, store undiluted antibody at 2-8°C for up to a week. For long-term storage, aliquot and store at -20°C or below. Storage in frost free freezers is not recommended. Avoid repeated

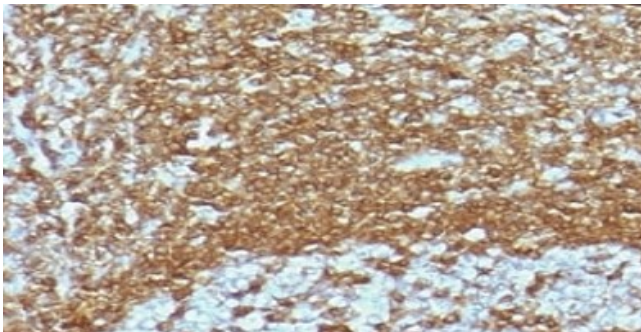
freeze/thaw cycles. Suggest spin the vial prior to opening. The antibody solution should be gently mixed before use.

Note For laboratory research only, not for drug, diagnostic or other use.

Bioinformation

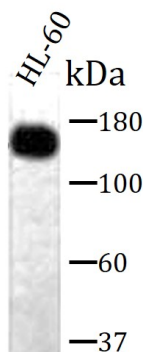
Gene Symbol	ICAM3
Gene Full Name	intercellular adhesion molecule 3
Background	The protein encoded by this gene is a member of the intercellular adhesion molecule (ICAM) family. All ICAM proteins are type I transmembrane glycoproteins, contain 2-9 immunoglobulin-like C2-type domains, and bind to the leukocyte adhesion LFA-1 protein. This protein is constitutively and abundantly expressed by all leucocytes and may be the most important ligand for LFA-1 in the initiation of the immune response. It functions not only as an adhesion molecule, but also as a potent signalling molecule. [provided by RefSeq, Jul 2008]
Function	ICAM proteins are ligands for the leukocyte adhesion protein LFA-1 (integrin alpha-L/beta-2). ICAM3 is also a ligand for integrin alpha-D/beta-2. [UniProt]
Calculated Mw	60 kDa
PTM	Upon stimulation by a physiologic stimuli becomes rapidly and transiently phosphorylated on serine residues. N-glycosylated; glycans consist of a mixture of tri- and tetra-antennary complex-type chains and high-mannose chains.
Cellular Localization	Cell surface

Images



ARG43671 anti-CD50 / ICAM3 antibody [ICAM3/1019] IHC-P image

Immunohistochemistry: Formalin-fixed and paraffin-embedded Human Tonsil tissue stained with ARG43671 anti-CD50 / ICAM3 antibody [ICAM3/1019] at 1:100 dilution. Antigen Retrieval: Heat mediated was performed using 10 mM citrate buffer pH 6.0



ARG43671 anti-CD50 / ICAM3 antibody [ICAM3/1019] WB image

Western blot: HL-60 cell lysate ARG43671 anti-CD50 / ICAM3 antibody [ICAM3/1019] at 1:100 dilution