

ARG43645 anti-CDX1 antibody

Package: 100 µl
Store at: -20°C

Summary

Product Description	Rabbit Polyclonal antibody recognizes CDX1
Tested Reactivity	Hu, Ms
Tested Application	WB
Host	Rabbit
Clonality	Polyclonal
Isotype	IgG
Target Name	CDX1
Species	Human
Immunogen	Recombinant protein fragment within a.a. 100 - 300 of Human Cdx1.
Conjugation	Un-conjugated
Alternate Names	Homeobox protein CDX-1; Caudal-type homeobox protein 1

Application Instructions

Predict Reactivity Note	Human				
Application table	<table><thead><tr><th>Application</th><th>Dilution</th></tr></thead><tbody><tr><td>WB</td><td>1:500 - 1:2000</td></tr></tbody></table>	Application	Dilution	WB	1:500 - 1:2000
Application	Dilution				
WB	1:500 - 1:2000				
Application Note	* The dilutions indicate recommended starting dilutions and the optimal dilutions or concentrations should be determined by the scientist.				
Observed Size	30-35 kDa				

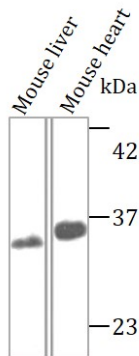
Properties

Form	Liquid
Purification	Affinity purified.
Buffer	PBS, 0.02% Sodium azide and 50% Glycerol.
Preservative	0.02% Sodium azide
Stabilizer	50% Glycerol
Concentration	Batch dependent
Storage instruction	For continuous use, store undiluted antibody at 2-8°C for up to a week. For long-term storage, aliquot and store at -20°C or below. Storage in frost free freezers is not recommended. Avoid repeated freeze/thaw cycles. Suggest spin the vial prior to opening. The antibody solution should be gently mixed before use.
Note	For laboratory research only, not for drug, diagnostic or other use.

Bioinformation

Gene Symbol	CDX1
Gene Full Name	caudal type homeobox 1
Background	This gene is a member of the caudal-related homeobox transcription factor gene family. The encoded DNA-binding protein regulates intestine-specific gene expression and enterocyte differentiation. It has been shown to induce expression of the intestinal alkaline phosphatase gene, and inhibit beta-catenin/T-cell factor transcriptional activity. [provided by RefSeq, Jul 2008]
Function	Could play a role in the terminal differentiation of the intestine. [UniProt]
Calculated Mw	28 kDa
Cellular Localization	Nucleus

Images



ARG43645 anti-CDX1 antibody WB image

Western blot: Mouse liver and Mouse heart stained with ARG43645 anti-CDX1 antibody at 1:10000 dilution, overnight at 4°C.