

## ARG43629 anti-ATG9A antibody

Package: 50 µg  
Store at: -20°C

### Summary

Product Description	Rabbit Polyclonal antibody recognizes ATG9A
Tested Reactivity	Hu, Ms, Rat
Tested Application	FACS, IHC-P, WB
Host	Rabbit
Clonality	Polyclonal
Isotype	IgG
Target Name	ATG9A
Species	Human
Immunogen	Recombinant fragment within a.a. 20-200 of Human ATG9A.
Conjugation	Un-conjugated
Alternate Names	APG9L1; MGD3208; APG9-like 1; mATG9; Autophagy-related protein 9A

### Application Instructions

Application table	Application	Dilution
	FACS	1 - 3 µg / 1X10 <sup>6</sup> cells
	IHC-P	1:100 - 1:250
	WB	1:500 - 1:2000
Application Note	IHC-P: Antigen retrieval: Heat mediated antigen retrieval was performed in EDTA (pH8.0) buffer * The dilutions indicate recommended starting dilutions and the optimal dilutions or concentrations should be determined by the scientist.	
Positive Control	A375	
Observed Size	94-120 kDa	

### Properties

Form	Liquid
Purification	Affinity purification with immunogen.
Buffer	0.9% NaCl, 0.2% Na <sub>2</sub> HPO <sub>4</sub> and 4% Trehalose.
Stabilizer	4% Trehalose
Concentration	0.5 mg/ml
Storage instruction	For continuous use, store undiluted antibody at 2-8°C for up to a week. For long-term storage, aliquot and store at -20°C or below. Storage in frost free freezers is not recommended. Avoid repeated freeze/thaw cycles. Suggest spin the vial prior to opening. The antibody solution should be gently mixed before use.

**Note**

For laboratory research only, not for drug, diagnostic or other use.

## Bioinformation

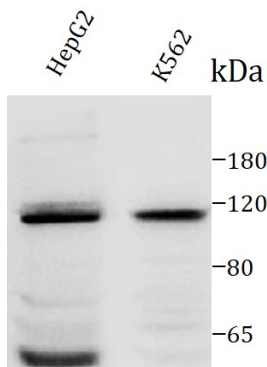
Gene Symbol	ATG9A
Gene Full Name	autophagy related 9A
Background	Acts upstream of or within autophagosome assembly. Located in endosome; phagophore assembly site; and trans-Golgi network. [provided by Alliance of Genome Resources, Apr 2022]
Function	Involved in autophagy and cytoplasm to vacuole transport (Cvt) vesicle formation. Plays a key role in the organization of the preautophagosomal structure/phagophore assembly site (PAS), the nucleating site for formation of the sequestering vesicle. Cycles between a juxta-nuclear trans-Golgi network compartment and late endosomes. Nutrient starvation induces accumulation on autophagosomes. Starvation-dependent trafficking requires ULK1, ATG13 and SUPT20H. [UniProt]
Research Area	Cancer antibody; Cell Biology and Cellular Response antibody; Cell Death antibody; Metabolism antibody; Neuroscience antibody
Calculated Mw	94 kDa
PTM	Acetylation; Glycoprotein; Phosphoprotein
Cellular Localization	Cytoplasmic vesicle, autophagosome membrane; Multi-pass membrane protein. Golgi apparatus, trans-Golgi network membrane; Multi-pass membrane protein. Late endosome membrane; Multi-pass membrane protein. Endoplasmic reticulum membrane; Multi-pass membrane protein. Note=Under amino acid starvation or rapamycin treatment, redistributes from a juxtannuclear clustered pool to a dispersed peripheral cytosolic pool. The starvation- induced redistribution depends on ULK1, ATG13, as well as SH3GLB1

## Images



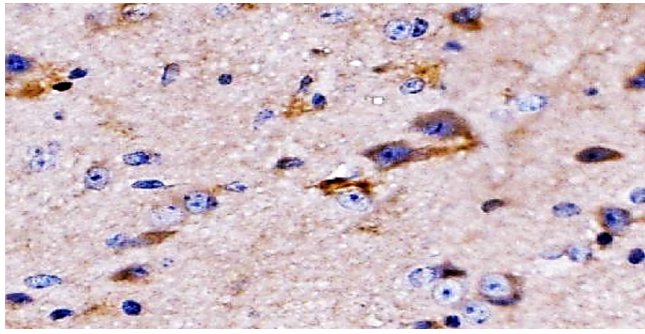
ARG43629 anti-ATG9A antibody IHC-P image

Immunohistochemistry: Formalin-fixed and paraffin-embedded Human Glioma tissue stained with ARG43629 anti-ATG9A antibody at 1:250 dilution. Antigen Retrieval: Heat mediated was performed using EDTA buffer pH 8.0.



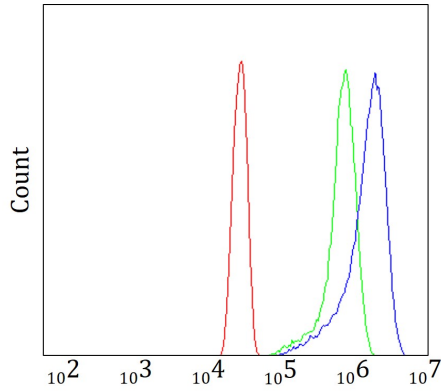
ARG43629 anti-ATG9A antibody WB image

Western blot: HepG2 and K562 cell lysates stained with ARG43629 anti-ATG9A antibody at 1:1000 dilution



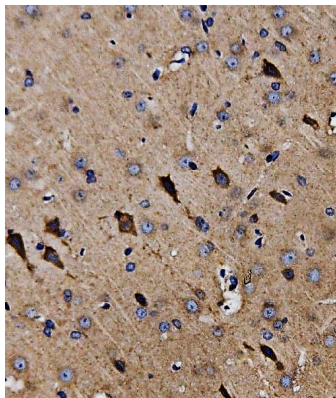
ARG43629 anti-ATG9A antibody IHC-P image

Immunohistochemistry: Formalin-fixed and paraffin-embedded Mouse Brain tissue stained with ARG43629 anti-ATG9A antibody at 1:250 dilution. Antigen Retrieval: Heat mediated was performed using EDTA buffer pH 8.0.



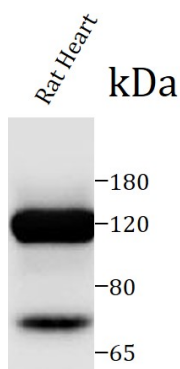
ARG43629 anti-ATG9A antibody FACS image

Flow Cytometry: HeLa cells were stained with ARG43629 anti-ATG9A antibody (blue) at 1:500 dilution, 1x10<sup>6</sup> cells for 30 min at RT. Unlabelled sample (red) was used as a control.



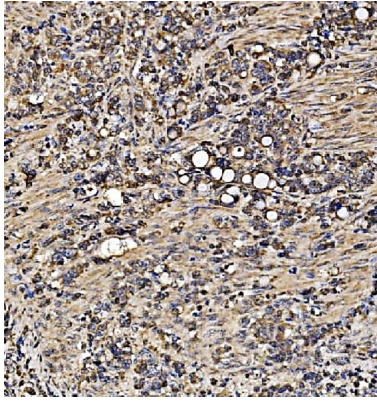
ARG43629 anti-ATG9A antibody IHC-P image

Immunohistochemistry: Formalin-fixed and paraffin-embedded Rat Brain tissue stained with ARG43629 anti-ATG9A antibody at 1:250 dilution. Antigen Retrieval: Heat mediated was performed using EDTA buffer pH 8.0.



ARG43629 anti-ATG9A antibody WB image

Western blot: Rat brain tissue stained with ARG43629 anti-ATG9A antibody at 1:1000 dilution



**ARG43629 anti-ATG9A antibody IHC-P image**

Immunohistochemistry: Formalin-fixed and paraffin-embedded Human Gastric Cancer Tissue stained with ARG43629 anti-ATG9A antibody at 1:250 dilution. Antigen Retrieval: Heat mediated was performed using EDTA buffer pH 8.0.