

ARG43628
anti-APC5 antibodyPackage: 50 µg
Store at: -20°C

Summary

Product Description	Rabbit Polyclonal antibody recognizes APC5
Tested Reactivity	Hu
Tested Application	FACS, ICC/IF, WB
Host	Rabbit
Clonality	Polyclonal
Isotype	IgG
Target Name	APC5
Species	Human
Immunogen	Recombinant fragment within a.a. 1-300 of Human APC5.
Conjugation	Un-conjugated
Alternate Names	Anaphase-promoting complex subunit 5; Cyclosome subunit 5; APC5

Application Instructions

Application table	Application	Dilution
	FACS	1 - 3 µg / 1X10 ⁶ cells
	ICC/IF	1:50 - 1:100
	WB	1:500 - 1:2000
Application Note	* The dilutions indicate recommended starting dilutions and the optimal dilutions or concentrations should be determined by the scientist.	
Positive Control	HL60	
Observed Size	85 kDa	

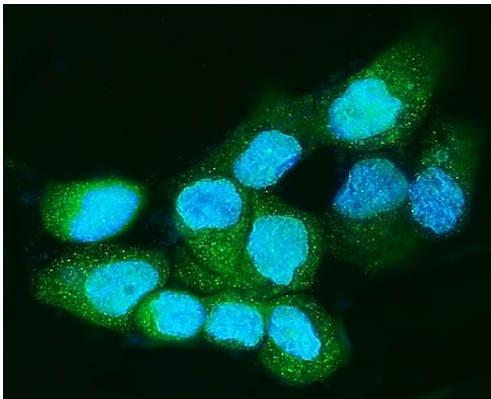
Properties

Form	Liquid
Purification	Affinity purification with immunogen.
Buffer	0.9% NaCl, 0.2% Na ₂ HPO ₄ , 0.01% Sodium azide and 4% Trehalose.
Preservative	0.01% Sodium azide
Stabilizer	4% Trehalose
Concentration	0.5 mg/ml
Storage instruction	For continuous use, store undiluted antibody at 2-8°C for up to a week. For long-term storage, aliquot and store at -20°C. Storage in frost free freezers is not recommended. Avoid repeated freeze/thaw cycles. Suggest spin the vial prior to opening. The antibody solution should be gently mixed before use.

Bioinformation

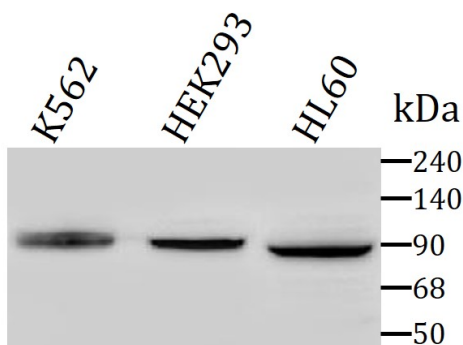
Gene Symbol	ANAPC5
Gene Full Name	anaphase promoting complex subunit 5
Background	This gene encodes a tetratricopeptide repeat-containing component of the anaphase promoting complex/cyclosome (APC/C), a large E3 ubiquitin ligase that controls cell cycle progression by targeting a number of cell cycle regulators such as B-type cyclins for 26S proteasome-mediated degradation through ubiquitination. The encoded protein is required for the proper ubiquitination function of APC/C and for the interaction of APC/C with transcription coactivators. It also interacts with polyA binding protein and represses internal ribosome entry site-mediated translation. Multiple transcript variants encoding different isoforms have been found for this gene. These differences cause translation initiation at a downstream AUG and result in a shorter protein (isoform b), compared to isoform a. [provided by RefSeq, Nov 2008]
Function	Component of the anaphase promoting complex/cyclosome (APC/C), a cell cycle-regulated E3 ubiquitin ligase that controls progression through mitosis and the G1 phase of the cell cycle. The APC/C complex acts by mediating ubiquitination and subsequent degradation of target proteins: it mainly mediates the formation of 'Lys-11'-linked polyubiquitin chains and, to a lower extent, the formation of 'Lys-48'- and 'Lys-63'-linked polyubiquitin chains. [UniProt]
Research Area	Cell Biology and Cellular Response antibody
Calculated Mw	85 kDa
PTM	Phosphoprotein
Cellular Localization	Cytoplasm; Cytoskeleton; Nucleus [UniProt]

Images



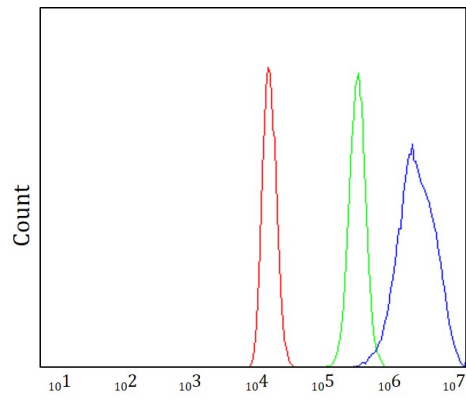
ARG43628 anti-APC5 antibody ICC/IF image

Immunofluorescence: A431 cells were stained with ARG43628 anti-APC5 antibody at 1:100 overnight at 4°C.



ARG43628 anti-APC5 antibody WB image

Western blot: K562, HEK293 and HL60 cell lysates stained with ARG43628 anti-APC5 antibody at 1:1000 dilution.



ARG43628 anti-APC5 antibody FACS image

Flow Cytometry: 293T cells stained with ARG43628 anti-APC5 antibody (Blue) at 1:100 dilution (1×10^6 cells). Unlabelled sample (Red) was used as a control.