

ARG43627
anti-XPC antibodyPackage: 50 µg
Store at: -20°C

Summary

Product Description	Rabbit Polyclonal antibody recognizes XPC
Tested Reactivity	Hu, Ms, Rat
Tested Application	FACS, ICC/IF, WB
Host	Rabbit
Clonality	Polyclonal
Isotype	IgG
Target Name	XPC
Species	Human
Immunogen	Recombinant protein corresponding to a.a. D146-E838 of Human XPC.
Conjugation	Un-conjugated
Alternate Names	p125; XPCC; Xeroderma pigmentosum group C-complementing protein; RAD4; XP3; DNA repair protein complementing XP-C cells

Application Instructions

Application table	Application	Dilution
	FACS	1 - 3 µg / 1X10 ⁶ cells
	ICC/IF	1:50 - 1:200
	WB	1:500 - 1:2000
Application Note	* The dilutions indicate recommended starting dilutions and the optimal dilutions or concentrations should be determined by the scientist.	
Observed Size	~120 kDa	

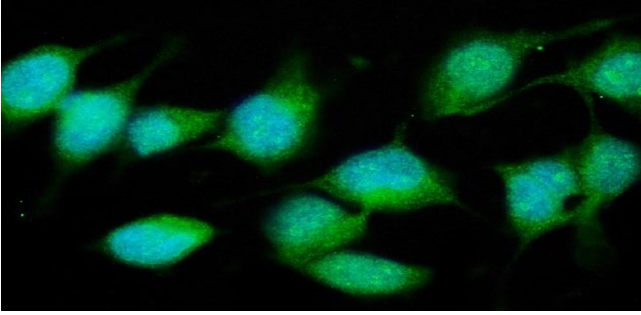
Properties

Form	Liquid
Purification	Affinity purification with immunogen.
Buffer	0.9% NaCl, 0.2% Na ₂ HPO ₄ , 0.01% Sodium azide and 4% Trehalose.
Preservative	0.01% Sodium azide
Stabilizer	4% Trehalose
Concentration	0.5 mg/ml
Storage instruction	For continuous use, store undiluted antibody at 2-8°C for up to a week. For long-term storage, aliquot and store at -20°C. Storage in frost free freezers is not recommended. Avoid repeated freeze/thaw cycles. Suggest spin the vial prior to opening. The antibody solution should be gently mixed before use.

Note For laboratory research only, not for drug, diagnostic or other use.

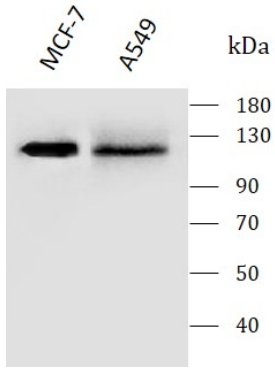
Bioinformation

Gene Symbol	XPC
Gene Full Name	xeroderma pigmentosum, complementation group C
Background	<p>This gene encodes a component of the nucleotide excision repair (NER) pathway. There are multiple components involved in the NER pathway, including Xeroderma pigmentosum (XP) A-G and V, Cockayne syndrome (CS) A and B, and trichothiodystrophy (TTD) group A, etc. This component, XPC, plays an important role in the early steps of global genome NER, especially in damage recognition, open complex formation, and repair protein complex formation. Mutations in this gene or some other NER components result in Xeroderma pigmentosum, a rare autosomal recessive disorder characterized by increased sensitivity to sunlight with the development of carcinomas at an early age. Alternatively spliced transcript variants have been found for this gene. [provided by RefSeq, Mar 2009]</p>
Function	<p>Involved in global genome nucleotide excision repair (GG-NER) by acting as damage sensing and DNA-binding factor component of the XPC complex. Has only a low DNA repair activity by itself which is stimulated by RAD23B and RAD23A. Has a preference to bind DNA containing a short single-stranded segment but not to damaged oligonucleotides. This feature is proposed to be related to a dynamic sensor function: XPC can rapidly screen duplex DNA for non-hydrogen-bonded bases by forming a transient nucleoprotein intermediate complex which matures into a stable recognition complex through an intrinsic single-stranded DNA-binding activity.</p> <p>The XPC complex is proposed to represent the first factor bound at the sites of DNA damage and together with other core recognition factors, XPA, RPA and the TFIIH complex, is part of the pre-incision (or initial recognition) complex. The XPC complex recognizes a wide spectrum of damaged DNA characterized by distortions of the DNA helix such as single-stranded loops, mismatched bubbles or single-stranded overhangs. The orientation of XPC complex binding appears to be crucial for inducing a productive NER. XPC complex is proposed to recognize and to interact with unpaired bases on the undamaged DNA strand which is followed by recruitment of the TFIIH complex and subsequent scanning for lesions in the opposite strand in a 5'-to-3' direction by the NER machinery. Cyclobutane pyrimidine dimers (CPDs) which are formed upon UV-induced DNA damage escape detection by the XPC complex due to a low degree of structural perturbation. Instead they are detected by the UV-DDB complex which in turn recruits and cooperates with the XPC complex in the respective DNA repair. In vitro, the XPC:RAD23B dimer is sufficient to initiate NER; it preferentially binds to cisplatin and UV-damaged double-stranded DNA and also binds to a variety of chemically and structurally diverse DNA adducts. XPC:RAD23B contacts DNA both 5' and 3' of a cisplatin lesion with a preference for the 5' side. XPC:RAD23B induces a bend in DNA upon binding. XPC:RAD23B stimulates the activity of DNA glycosylases TDG and SMUG1. [UniProt]</p>
Calculated Mw	106 kDa
PTM	<p>Ubiquitinated upon UV irradiation; the ubiquitination requires the UV-DDB complex, appears to be reversible and does not serve as a signal for degradation (PubMed:15882621, PubMed:23751493). Ubiquitinated by RNF11 via 'Lys-63'-linked ubiquitination (PubMed:23751493). Ubiquitination by RNF111 is polysumoylation-dependent and promotes nucleotide excision repair (PubMed:23751493). Sumoylated; sumoylation promotes ubiquitination by RNF111.</p>
Cellular Localization	Chromosome; Cytoplasm; Nucleus



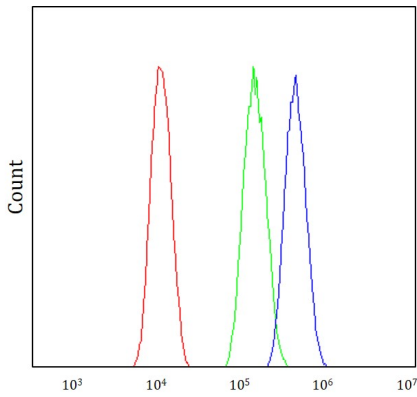
ARG43627 anti-XPC antibody ICC/IF image

Immunofluorescence: HeLa stained with ARG43627 anti-XPC antibody at 5 µg/ml dilution.



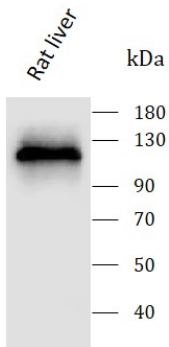
ARG43627 anti-XPC antibody WB image

Western blot: MCF-7 and A549 stained with ARG43627 anti-XPC antibody at 0.5 µg/mL dilution.



ARG43627 anti-XPC antibody FACS image

Flow Cytometry: A549 stained with ARG43627 anti-XPC antibody at 1 µg / 10⁶ cells dilution.



ARG43627 anti-XPC antibody WB image

Western blot: Rat liver stained with ARG43627 anti-XPC antibody at 0.5 µg/mL dilution.

ARG43627 anti-XPC antibody WB image

Western blot: Mouse lung stained with ARG43627 anti-XPC antibody at 0.5 $\mu\text{g}/\text{mL}$ dilution.

