

ARG43616 anti-Annexin A1 antibody

Package: 50 µg
Store at: -20°C

Summary

Product Description	Rabbit Polyclonal antibody recognizes Annexin A1
Tested Reactivity	Hu, Mk
Tested Application	FACS, ICC/IF, IHC-P, WB
Host	Rabbit
Clonality	Polyclonal
Isotype	IgG
Target Name	Annexin A1
Species	Human
Immunogen	Synthetic peptide corresponding to a.a. 3-24 of Human Annexin A1.
Conjugation	Un-conjugated
Alternate Names	ANX1; Calpactin II; Phospholipase A2 inhibitory protein; Chromobindin-9; LPC1; Annexin-1; Annexin A1; Lipocortin I; Annexin I; p35; Calpactin-2

Application Instructions

Application table	Application	Dilution
	FACS	1 - 3 µg / 1X10 ⁶ cells
	ICC/IF	1:50 - 1:100
	IHC-P	1:200 - 1:1000
	WB	1:500 - 1:4000
Application Note	IHC-P: Antigen Retrieval: By heat mediation. * The dilutions indicate recommended starting dilutions and the optimal dilutions or concentrations should be determined by the scientist.	
Observed Size	37-39 kDa	

Properties

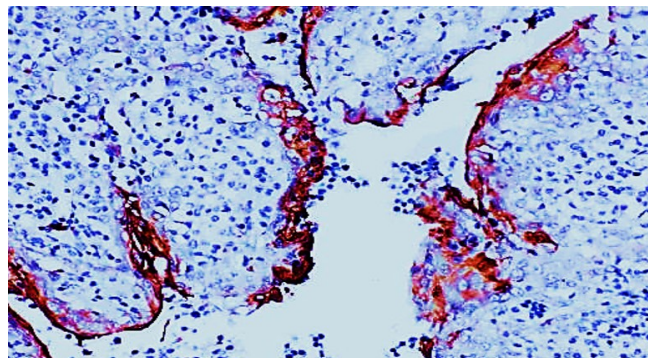
Form	Liquid
Purification	Affinity purification with immunogen.
Buffer	0.9% NaCl, 0.2% Na ₂ HPO ₄ , 0.05% Thimerosal, 0.05% Sodium azide and 5% BSA.
Preservative	0.05% Thimerosal and 0.05% Sodium azide
Stabilizer	5% BSA
Concentration	0.5 mg/ml

Storage instruction	For continuous use, store undiluted antibody at 2-8°C for up to a week. For long-term storage, aliquot and store at -20°C or below. Storage in frost free freezers is not recommended. Avoid repeated freeze/thaw cycles. Suggest spin the vial prior to opening. The antibody solution should be gently mixed before use.
Note	For laboratory research only, not for drug, diagnostic or other use.

Bioinformation

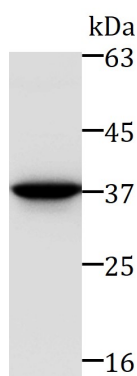
Gene Symbol	ANXA1
Gene Full Name	annexin A1
Background	This gene encodes a membrane-localized protein that binds phospholipids. This protein inhibits phospholipase A2 and has anti-inflammatory activity. Loss of function or expression of this gene has been detected in multiple tumors. [provided by RefSeq, Dec 2014]
Function	Calcium/phospholipid-binding protein which promotes membrane fusion and is involved in exocytosis. This protein regulates phospholipase A2 activity. It seems to bind from two to four calcium ions with high affinity. [UniProt]
Calculated Mw	39 kDa
PTM	Phosphorylated by protein kinase C, EGFR and TRPM7 (PubMed:2457390, PubMed:15485879). Phosphorylated in response to EGF treatment (PubMed:2532504). Sumoylated. [UniProt]
Cellular Localization	Endosome; Nucleus; Plasma membrane; Secreted. [UniProt]

Images



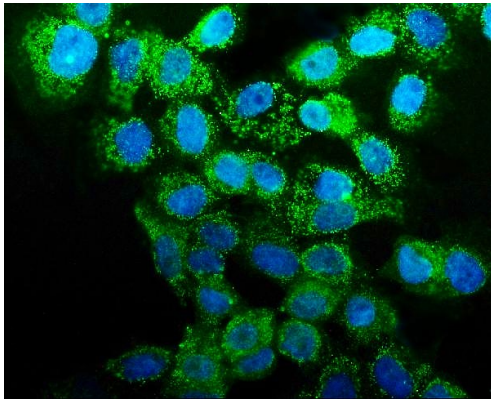
ARG43616 anti-Annexin A1 antibody IHC-P image

Immunohistochemistry: Formalin-fixed and paraffin-embedded Human placenta tissue stained with ARG43616 anti-Annexin A1 antibody at 1:500 dilution.



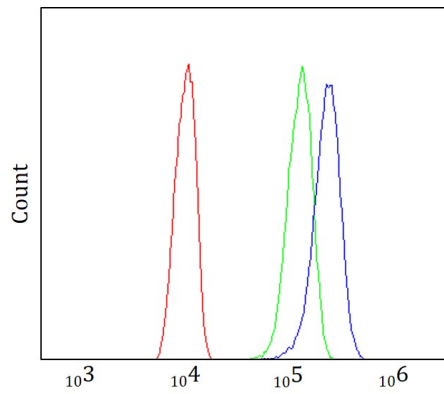
ARG43616 anti-Annexin A1 antibody WB image

Western blot: HeLa cell lysates stained with ARG43616 anti-Annexin A1 antibody at 1:1000 dilution.



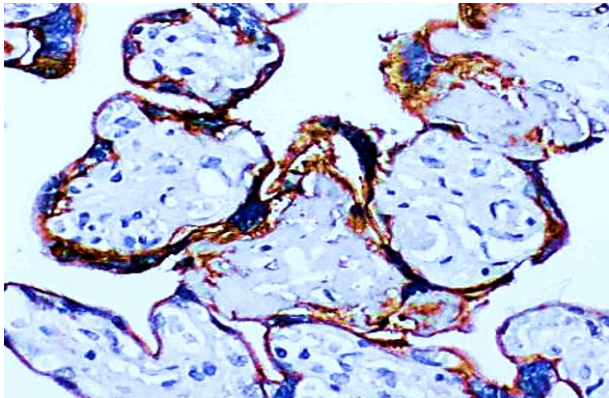
ARG43616 anti-Annexin A1 antibody ICC/IF image

Immunofluorescence: A431 cells were stained with ARG43616 anti-Annexin A1 antibody at 1:100 dilution 30 minutes at 37°C.



ARG43616 anti-Annexin A1 antibody FACS image

Flow Cytometry: A431 cells stained with ARG43616 anti-Annexin A1 antibody at 1:100 dilution, $1 \mu\text{g} / 10^6$.



ARG43616 anti-Annexin A1 antibody IHC-P image

Immunohistochemistry: Formalin-fixed and paraffin-embedded Human tonsil tissue stained with ARG43616 anti-Annexin A1 antibody at 1:500 dilution.