

ARG43615 anti-TCP1 alpha antibody [2E7]

Package: 50 µg
Store at: -20°C

Summary

Product Description	Mouse Monoclonal antibody [2E7] recognizes TCP1 alpha
Tested Reactivity	Hu
Tested Application	FACS, ICC/IF, IHC-P, WB
Specificity	Detects ~60kDa. Also detects ~92kDa. Cross reactivity with Mouse HSP60 has been observed with this antibody in immunoblot analysis. Reacts weakly with <i>Saccharomyces cerevisiae</i> .
Host	Mouse
Clonality	Monoclonal
Clone	2E7
Isotype	IgG1
Target Name	TCP1 alpha
Species	Human
Immunogen	Synthetic peptide corresponding to a.a. 515-551 within C-terminal region of Human TCP1 alpha.
Conjugation	Un-conjugated
Alternate Names	T-complex protein 1 subunit alpha; CCT1; D6S230E; TCP-1-alpha; CCTa; CCT-alpha

Application Instructions

Application table	Application	Dilution
	FACS	1 - 3 µg / 1X10 ⁶ cells
	ICC/IF	1:50 - 1:250
	IHC-P	1:50 - 1:500
	WB	1:500 - 1:2500
Application Note	IHC-P: Antigen Retrieval: Boil tissue section in citrate buffer (pH 6.0) for 20 min. * The dilutions indicate recommended starting dilutions and the optimal dilutions or concentrations should be determined by the scientist.	
Observed Size	~60 kDa	

Properties

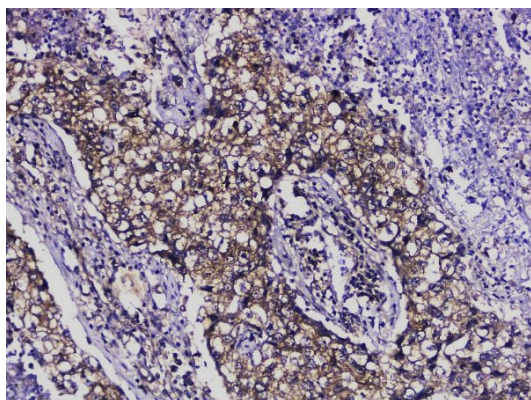
Form	Liquid
Purification	Affinity purification with immunogen.
Buffer	0.9% NaCl, 0.2% Na ₂ HPO ₄ , 0.05% Sodium azide and 4% Trehalose.
Preservative	0.05% Sodium azide

Stabilizer	4% Trehalose
Concentration	0.5 mg/ml
Storage instruction	For continuous use, store undiluted antibody at 2-8°C for up to a week. For long-term storage, aliquot and store at -20°C. Storage in frost free freezers is not recommended. Avoid repeated freeze/thaw cycles. Suggest spin the vial prior to opening. The antibody solution should be gently mixed before use.
Note	For laboratory research only, not for drug, diagnostic or other use.

Bioinformation

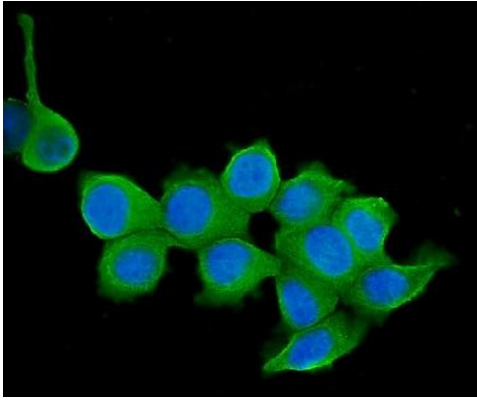
Gene Symbol	TCP1
Gene Full Name	t-complex protein 1
Background	The protein encoded by this gene is a molecular chaperone that is a member of the chaperonin containing TCP1 complex (CCT), also known as the TCP1 ring complex (TRiC). This complex consists of two identical stacked rings, each containing eight different proteins. Unfolded Monopeptides enter the central cavity of the complex and are folded in an ATP-dependent manner. The complex folds various proteins, including actin and tubulin. Alternate transcriptional splice variants of this gene, encoding different isoforms, have been characterized. In addition, three pseudogenes that appear to be derived from this gene have been found. [provided by RefSeq, Jun 2010]
Function	Molecular chaperone; assists the folding of proteins upon ATP hydrolysis. As part of the BBS/CCT complex may play a role in the assembly of BBSome, a complex involved in ciliogenesis regulating transports vesicles to the cilia. Known to play a role, in vitro, in the folding of actin and tubulin. [UniProt]
Calculated Mw	60 kDa
PTM	Acetylation; Phosphoprotein
Cellular Localization	Cytoplasm

Images



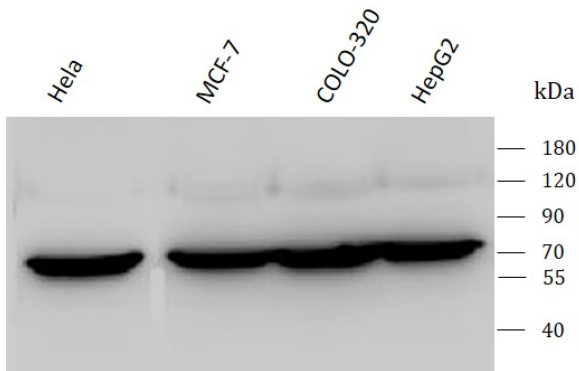
ARG43615 anti-TCP1 alpha antibody [2E7] IHC-P image

Immunohistochemistry: Human lung cancer stained with ARG43615 anti-TCP1 alpha antibody [2E7] at 2 µg/ml dilution.



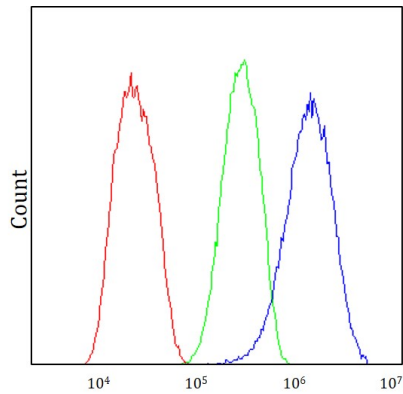
ARG43615 anti-TCP1 alpha antibody [2E7] ICC/IF image

Immunofluorescence: MCF7 stained with ARG43615 anti-TCP1 alpha antibody [2E7] at 2 $\mu\text{g}/\text{ml}$ dilution.



ARG43615 anti-TCP1 alpha antibody [2E7] WB image

Western blot: HeLa, MCF-7, COLO-320 and HepG2 stained with ARG43615 anti-TCP1 alpha antibody [2E7] at 0.5 $\mu\text{g}/\text{mL}$ dilution.



ARG43615 anti-TCP1 alpha antibody [2E7] FACS image

Flow Cytometry: HepG2 stained with ARG43615 anti-TCP1 alpha antibody [2E7] at 1 $\mu\text{g} / 10^6$ cells dilution.