

**ARG43536**  
anti-LC3B antibodyPackage: 100 µl  
Store at: -20°C

### Summary

Product Description	Rabbit Polyclonal antibody recognizes LC3B.
Tested Reactivity	Hu, Ms, Rat
Tested Application	ICC/IF, IP, WB
Host	Rabbit
Clonality	Polyclonal
Isotype	IgG
Target Name	LC3B
Species	Human
Immunogen	Synthetic peptide derived from human LC3B
Conjugation	Un-conjugated
Alternate Names	LC3B; ATG8F; MAP1LC3B-a; MAP1A/1BLC3

### Application Instructions

Application table	Application	Dilution
	ICC/IF	1:50 - 1:200
	IP	1:20 - 1:50
	WB	1:500 - 1:2000

**Application Note** \* The dilutions indicate recommended starting dilutions and the optimal dilutions or concentrations should be determined by the scientist.

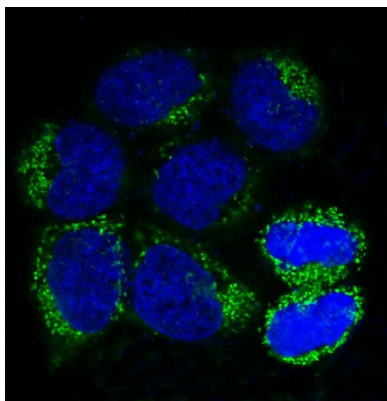
### Properties

Form	Liquid
Purification	Affinity purified.
Buffer	PBS (pH 7.4), 0.02% Sodium azide and 50% Glycerol.
Preservative	0.02% Sodium azide
Stabilizer	50% Glycerol
Storage instruction	For continuous use, store undiluted antibody at 2-8°C for up to a week. For long-term storage, aliquot and store at -20°C or below. Storage in frost free freezers is not recommended. Avoid repeated freeze/thaw cycles. Suggest spin the vial prior to opening. The antibody solution should be gently mixed before use.
Note	For laboratory research only, not for drug, diagnostic or other use.

## Bioinformation

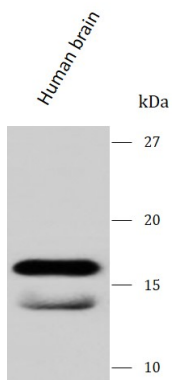
Gene Symbol	MAP1LC3B
Gene Full Name	microtubule-associated protein 1 light chain 3 beta
Background	The product of this gene is a subunit of neuronal microtubule-associated MAP1A and MAP1B proteins, which are involved in microtubule assembly and important for neurogenesis. Studies on the rat homolog implicate a role for this gene in autophagy, a process that involves the bulk degradation of cytoplasmic component. [provided by RefSeq, Jul 2008]
Function	Ubiquitin-like modifier involved in formation of autophagosomal vacuoles (autophagosomes). Plays a role in mitophagy which contributes to regulate mitochondrial quantity and quality by eliminating the mitochondria to a basal level to fulfill cellular energy requirements and preventing excess ROS production. Whereas LC3s are involved in elongation of the phagophore membrane, the GABARAP/GATE-16 subfamily is essential for a later stage in autophagosome maturation. Promotes primary ciliogenesis by removing OFD1 from centriolar satellites via the autophagic pathway. [UniProt]

## Images



ARG43536 anti-LC3B antibody ICC/IF image

Immunofluorescence: HeLa stained with ARG43536 anti-LC3B antibody.

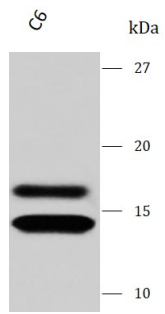


ARG43536 anti-LC3B antibody WB image

Western blot: Human brain stained with ARG43536 anti-LC3B antibody.

ARG43536 anti-LC3B antibody WB image

Western blot: C6 stained with ARG43536 anti-LC3B antibody.



ARG43536 anti-LC3B antibody WB image

Western blot: RAW 264.7 stained with ARG43536 anti-LC3B antibody.

