

## ARG43513 anti-Cadherin 6 antibody

Package: 50 µg  
Store at: -20°C

### Summary

Product Description	Rabbit Polyclonal antibody recognizes Cadherin 6
Tested Reactivity	Hu, Ms, Rat
Tested Application	FACS, IHC-P, WB
Host	Rabbit
Clonality	Polyclonal
Isotype	IgG
Target Name	Cadherin 6
Species	Human
Immunogen	Recombinant protein containing to human Cadherin 6.
Conjugation	Un-conjugated
Alternate Names	CAD6; KCAD; Cadherin 6, Type 2, K-Cadherin (Fetal Kidney); K-Cadherin; Kidney Cadherin

### Application Instructions

Application table	Application	Dilution
	FACS	1 - 3 µg/10 <sup>6</sup> cells
	IHC-P	2-5 µg/ml
	WB	0.25-0.5 µg/ml
Application Note	* The dilutions indicate recommended starting dilutions and the optimal dilutions or concentrations should be determined by the scientist.	
Observed Size	88 kDa	

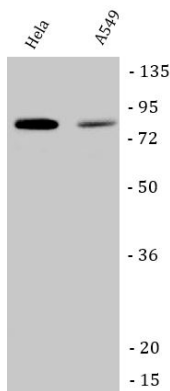
### Properties

Form	Liquid
Purification	Affinity purified
Buffer	0.2% Na <sub>2</sub> HPO <sub>4</sub> , 0.9% NaCl and 4% Trehalose.
Stabilizer	4% Trehalose
Concentration	0.5 mg/ml
Storage instruction	For continuous use, store undiluted antibody at 2-8°C for up to a week. For long-term storage, aliquot and store at -20°C or below. Storage in frost free freezers is not recommended. Avoid repeated freeze/thaw cycles. Suggest spin the vial prior to opening. The antibody solution should be gently mixed before use.
Note	For laboratory research only, not for drug, diagnostic or other use.

## Bioinformation

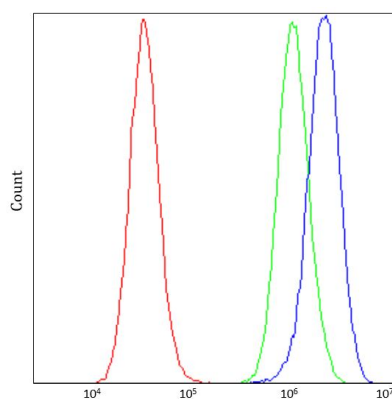
Gene Symbol	CDH6
Gene Full Name	cadherin 6, type 2, K-cadherin (fetal kidney)
Background	This gene encodes a member of the cadherin superfamily. Cadherins are membrane glycoproteins that mediate homophilic cell-cell adhesion and play critical roles in cell differentiation and morphogenesis. The encoded protein is a type II cadherin and may play a role in kidney development as well as endometrium and placenta formation. Decreased expression of this gene may be associated with tumor growth and metastasis. [provided by RefSeq, May 2011]
Function	Cadherins are calcium-dependent cell adhesion proteins. They preferentially interact with themselves in a homophilic manner in connecting cells; cadherins may thus contribute to the sorting of heterogeneous cell types. [UniProt]
Calculated Mw	88 kDa
PTM	Cleavage on pair of basic residues; Glycoprotein; Phosphoprotein. [UniProt]
Cellular Localization	Cell membrane. [UniProt]

## Images



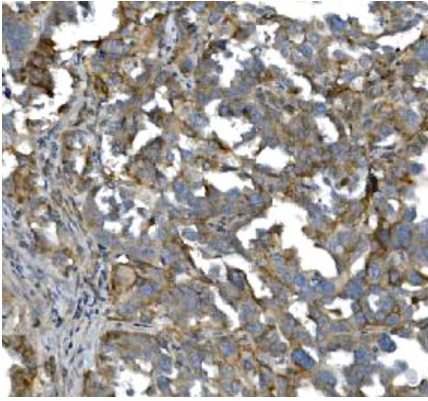
ARG43513 anti-Cadherin 6 antibody WB image

Western blot: HeLa and A549 stained with ARG43513 anti-Cadherin 6 antibody at 0.5  $\mu\text{g}/\text{ml}$  dilution.



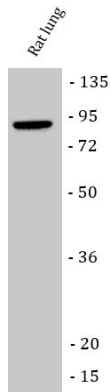
ARG43513 anti-Cadherin 6 antibody FACS image

Flow Cytometry: PC-3 stained with ARG43513 anti-Cadherin 6 antibody at 1  $\mu\text{g}/10^6$  cells dilution.



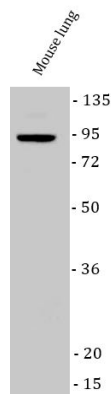
ARG43513 anti-Cadherin 6 antibody IHC-P image

Immunohistochemistry: Human ovarian cancer stained with ARG43513 anti-Cadherin 6 antibody at 2  $\mu\text{g}/\text{ml}$  dilution.



ARG43513 anti-Cadherin 6 antibody WB image

Western blot: Rat lung stained with ARG43513 anti-Cadherin 6 antibody at 0.5  $\mu\text{g}/\text{ml}$  dilution.



ARG43513 anti-Cadherin 6 antibody WB image

Western blot: Mouse lung stained with ARG43513 anti-Cadherin 6 antibody at 0.5  $\mu\text{g}/\text{ml}$  dilution.