

## ARG43439 anti-TAS1R2 / GPR71 antibody

Package: 100 µl  
Store at: -20°C

### Summary

Product Description	Rabbit Polyclonal antibody recognizes TAS1R2 / GPR71
Tested Reactivity	Hu
Tested Application	WB
Host	Rabbit
Clonality	Polyclonal
Isotype	IgG
Target Name	TAS1R2 / GPR71
Species	Human
Immunogen	Synthetic peptide within aa. 450-550 of Human TAS1R2 / GPR71 (NP_689418.2).
Conjugation	Un-conjugated
Alternate Names	G-protein coupled receptor 71; T1R2; GPR71; Sweet taste receptor T1R2; TR2; Taste receptor type 1 member 2

### Application Instructions

Application table	Application	Dilution
	WB	1:500 - 1:2000
Application Note	* The dilutions indicate recommended starting dilutions and the optimal dilutions or concentrations should be determined by the scientist.	
Positive Control	MCF7	
Observed Size	~ 100 kDa	

### Properties

Form	Liquid
Purification	Affinity purified.
Buffer	PBS (pH 7.3), 0.02% Sodium azide and 50% Glycerol.
Preservative	0.02% Sodium azide
Stabilizer	50% Glycerol
Storage instruction	For continuous use, store undiluted antibody at 2-8°C for up to a week. For long-term storage, aliquot and store at -20°C. Storage in frost free freezers is not recommended. Avoid repeated freeze/thaw cycles. Suggest spin the vial prior to opening. The antibody solution should be gently mixed before use.
Note	For laboratory research only, not for drug, diagnostic or other use.

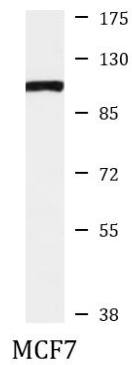
## Bioinformation

---

Gene Symbol	TAS1R2
Gene Full Name	taste receptor, type 1, member 2
Function	Putative taste receptor. TAS1R2/TAS1R3 recognizes diverse natural and synthetic sweeteners. [UniProt]
Calculated Mw	95 kDa
Cellular Localization	Cell membrane; Multi-pass membrane protein. [UniProt]

## Images

---



ARG43439 anti-TAS1R2 / GPR71 antibody WB image

Western blot: 25 µg of MCF7 cell lysate stained with ARG43439 anti-TAS1R2 / GPR71 antibody at 1:1000 dilution.