

ARG43427 anti-DHODH antibody

Package: 50 µg
Store at: -20°C

Summary

Product Description	Rabbit Polyclonal antibody recognizes DHODH
Tested Reactivity	Hu, Ms, Rat
Tested Application	IHC-P, WB
Host	Rabbit
Clonality	Polyclonal
Isotype	IgG
Target Name	DHODH
Species	Human
Immunogen	Synthetic peptide corresponding to aa. 132-173 of Human DHODH. (RVFRL PEDQA VINRY GFNSH GLSVV EHRLR ARQQK QAKLT ED)
Conjugation	Un-conjugated
Alternate Names	URA1; POADS; DHODEHase; Dihydroorotate dehydrogenase (quinone), mitochondrial; DHODEHase; EC 1.3.5.2; Dihydroorotate oxidase

Application Instructions

Application table	Application	Dilution
	IHC-P	1:200 - 1:1000
	WB	1:500 - 1:2000
Application Note	IHC-P: Antigen Retrieval: Heat mediation was performed in EDTA buffer (pH 8.0). * The dilutions indicate recommended starting dilutions and the optimal dilutions or concentrations should be determined by the scientist.	
Observed Size	~ 43 kDa	

Properties

Form	Liquid
Purification	Affinity purification with immunogen.
Buffer	0.2% Na ₂ HPO ₄ , 0.9% NaCl, 0.05% Sodium azide and 5% BSA.
Preservative	0.05% Sodium azide
Stabilizer	5% BSA
Concentration	0.5 mg/ml
Storage instruction	For continuous use, store undiluted antibody at 2-8°C for up to a week. For long-term storage, aliquot and store at -20°C or below. Storage in frost free freezers is not recommended. Avoid repeated freeze/thaw cycles. Suggest spin the vial prior to opening. The antibody solution should be gently mixed

before use.

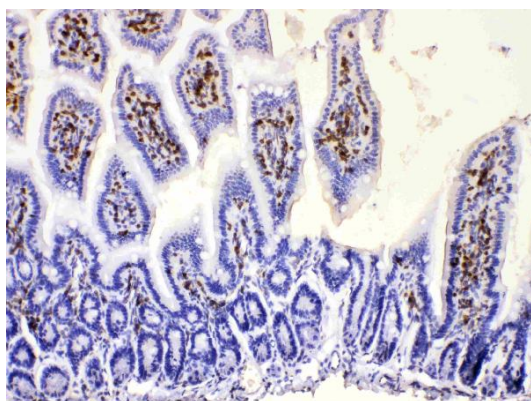
Note

For laboratory research only, not for drug, diagnostic or other use.

Bioinformation

Gene Symbol	DHODH
Gene Full Name	dihydroorotate dehydrogenase (quinone)
Background	The protein encoded by this gene catalyzes the fourth enzymatic step, the ubiquinone-mediated oxidation of dihydroorotate to orotate, in de novo pyrimidine biosynthesis. This protein is a mitochondrial protein located on the outer surface of the inner mitochondrial membrane. [provided by RefSeq, Jul 2008]
Function	Catalyzes the conversion of dihydroorotate to orotate with quinone as electron acceptor. [UniProt]
Calculated Mw	43 kDa
PTM	The uncleaved transit peptide is required for mitochondrial targeting and proper membrane integration. [UniProt]
Cellular Localization	Mitochondrion inner membrane; Single-pass membrane protein. [UniProt]

Images



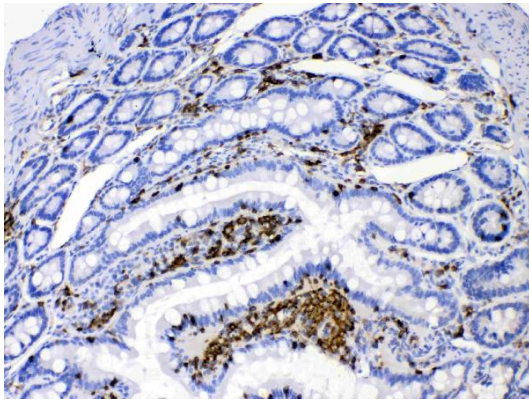
ARG43427 anti-DHODH antibody IHC-P image

Immunohistochemistry: Paraffin-embedded Mouse intestine tissue. Antigen Retrieval: Heat mediation was performed in EDTA buffer (pH 8.0). The tissue section was blocked with 10% goat serum. The tissue section was then stained with ARG43427 anti-DHODH antibody at 1 µg/ml dilution, overnight at 4°C.



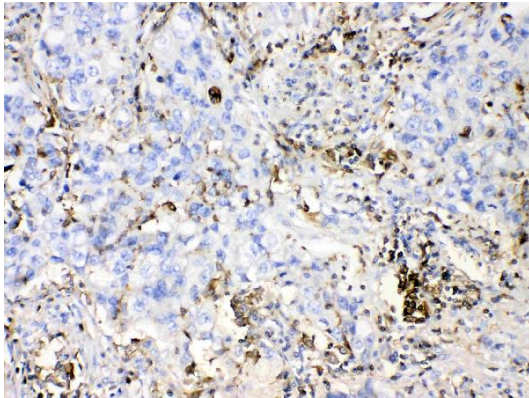
ARG43427 anti-DHODH antibody WB image

Western blot: 30 µg of sample under reducing conditions. Rat liver, Mouse spleen and HepG2 whole cell lysates stained with ARG43427 anti-DHODH antibody at 0.5 µg/ml dilution, overnight at 4°C.



ARG43427 anti-DHODH antibody IHC-P image

Immunohistochemistry: Paraffin-embedded Rat intestine tissue. Antigen Retrieval: Heat mediation was performed in EDTA buffer (pH 8.0). The tissue section was blocked with 10% goat serum. The tissue section was then stained with ARG43427 anti-DHODH antibody at 1 µg/ml dilution, overnight at 4°C.



ARG43427 anti-DHODH antibody IHC-P image

Immunohistochemistry: Paraffin-embedded Human lung cancer tissue. Antigen Retrieval: Heat mediation was performed in EDTA buffer (pH 8.0). The tissue section was blocked with 10% goat serum. The tissue section was then stained with ARG43427 anti-DHODH antibody at 1 µg/ml dilution, overnight at 4°C.
