

**ARG43422**  
anti-FAM172a antibodyPackage: 50 µl  
Store at: -20°C

### Summary

Product Description	Rabbit Polyclonal antibody recognizes FAM172a
Tested Reactivity	Ms
Tested Application	WB
Host	Rabbit
Clonality	Polyclonal
Isotype	IgG
Target Name	FAM172a
Species	Mouse
Immunogen	Synthetic peptide around the N-terminal region of Mouse FAM172a. (within the following region: MTFKF PADPE VQSNL VGARI LREKV RARAQ GSSPR DLEGH ASSHL PSQHC)
Conjugation	Un-conjugated
Alternate Names	Protein FAM172A; C5orf21

### Application Instructions

Application table	Application	Dilution
	WB	0.2 - 1 µg/ml
Application Note	* The dilutions indicate recommended starting dilutions and the optimal dilutions or concentrations should be determined by the scientist.	
Positive Control	NIH/3T3	
Observed Size	~ 48 kDa	

### Properties

Form	Liquid
Purification	Affinity purified.
Buffer	PBS, 0.09% (w/v) Sodium azide and 2% Sucrose.
Preservative	0.09% (w/v) Sodium azide
Stabilizer	2% Sucrose
Concentration	Batch dependent: 0.5 - 1 mg/ml
Storage instruction	For continuous use, store undiluted antibody at 2-8°C for up to a week. For long-term storage, aliquot and store at -20°C or below. Storage in frost free freezers is not recommended. Avoid repeated freeze/thaw cycles. Suggest spin the vial prior to opening. The antibody solution should be gently mixed before use.

**Note**

For laboratory research only, not for drug, diagnostic or other use.

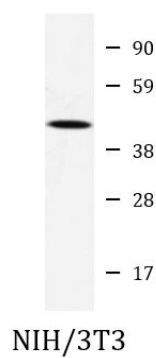
## Bioinformation

---

Gene Symbol	FAM172A
Gene Full Name	family with sequence similarity 172, member A
Function	Plays a role in the regulation of alternative splicing, by interacting with AGO2 and CHD7. Seems to be required for stabilizing protein-protein interactions at the chromatin-spliceosome interface. May have hydrolase activity. [UniProt]
Calculated Mw	48 kDa
Cellular Localization	Secreted. [UniProt]

## Images

---



ARG43422 anti-FAM172a antibody WB image

Western blot: NIH/3T3 cell lysate stained with ARG43422 anti-FAM172a antibody at 0.2 - 1  $\mu$ g/ml dilution.