

## ARG43364 anti-GDNF Receptor alpha 1 antibody

Package: 50 µg  
Store at: -20°C

### Summary

Product Description	Rabbit Polyclonal antibody recognizes GDNF Receptor alpha 1
Tested Reactivity	Hu
Tested Application	IHC-P, WB
Host	Rabbit
Clonality	Polyclonal
Isotype	IgG
Target Name	GDNF Receptor alpha 1
Species	Human
Immunogen	Recombinant protein corresponding to D25-Q227 of Human GDNF Receptor alpha 1.
Conjugation	Un-conjugated
Alternate Names	GDNFR-alpha-1; GDNFRA; GFR-ALPHA-1; RET ligand 1; GFR-alpha-1; RETL1; GDNF receptor alpha-1; TRNR1; TGF-beta-related neurotrophic factor receptor 1; RETL1; GDNFR; GDNF family receptor alpha-1

### Application Instructions

Application table	Application	Dilution
	IHC-P	1:200 - 1:1000
	WB	1:500 - 1:2000
Application Note	* The dilutions indicate recommended starting dilutions and the optimal dilutions or concentrations should be determined by the scientist.	
Positive Control	Human placenta	
Observed Size	~ 51 kDa	

### Properties

Form	Liquid
Purification	Affinity purification with immunogen.
Buffer	0.2% Na <sub>2</sub> HPO <sub>4</sub> , 0.9% NaCl, 0.05% Sodium azide and 5% BSA.
Preservative	0.05% Sodium azide
Stabilizer	5% BSA
Concentration	0.5 mg/ml
Storage instruction	For continuous use, store undiluted antibody at 2-8°C for up to a week. For long-term storage, aliquot and store at -20°C or below. Storage in frost free freezers is not recommended. Avoid repeated freeze/thaw cycles. Suggest spin the vial prior to opening. The antibody solution should be gently mixed before use.

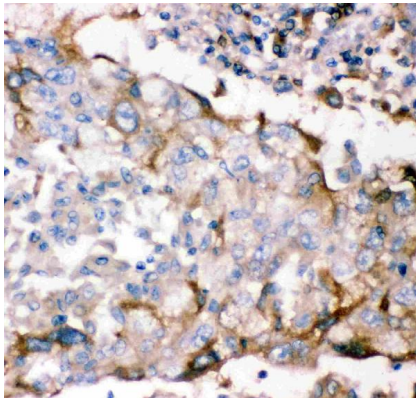
Note For laboratory research only, not for drug, diagnostic or other use.

## Bioinformation

---

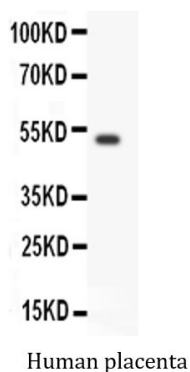
Gene Symbol	GFRA1
Gene Full Name	GDNF family receptor alpha 1
Background	This gene encodes a member of the glial cell line-derived neurotrophic factor receptor (GDNFR) family of proteins. The encoded preproprotein is proteolytically processed to generate the mature receptor. Glial cell line-derived neurotrophic factor (GDNF) and neurturin (NTN) are two structurally related, potent neurotrophic factors that play key roles in the control of neuron survival and differentiation. This receptor is a glycosylphosphatidylinositol (GPI)-linked cell surface receptor for both GDNF and NTN, and mediates activation of the RET tyrosine kinase receptor. This gene is a candidate gene for Hirschsprung disease. Alternative splicing results in multiple transcript variants, at least one of which encodes a preproprotein that is proteolytically processed. [provided by RefSeq, Jan 2016]
Function	Receptor for GDNF. Mediates the GDNF-induced autophosphorylation and activation of the RET receptor (By similarity). [UniProt]
Calculated Mw	51 kDa
Cellular Localization	Cell membrane; Lipid-anchor, GPI-anchor. [UniProt]

## Images



ARG43364 anti-GDNF Receptor alpha 1 antibody IHC-P image

Immunohistochemistry: Paraffin-embedded Human lung cancer tissue stained with ARG43364 anti-GDNF Receptor alpha 1 antibody.



ARG43364 anti-GDNF Receptor alpha 1 antibody WB image

Western blot: 50 µg of Human placenta lysate stained with ARG43364 anti-GDNF Receptor alpha 1 antibody at 0.5 µg/ml dilution.