

## ARG43361 anti-GDNF Receptor alpha 1 antibody

Package: 100 µl  
Store at: -20°C

### Summary

Product Description	Rabbit Polyclonal antibody recognizes GDNF Receptor alpha 1
Tested Reactivity	Hu, Ms, Rat
Tested Application	ICC/IF, IHC-P, WB
Host	Rabbit
Clonality	Polyclonal
Isotype	IgG
Target Name	GDNF Receptor alpha 1
Species	Human
Immunogen	Recombinant fusion protein corresponding to aa. 25-280 of Human GDNF Receptor alpha 1 (NP_665736.1).
Conjugation	Un-conjugated
Alternate Names	GDNFR-alpha-1; GDNFRA; GFR-ALPHA-1; RET ligand 1; GFR-alpha-1; RET1L; GDNF receptor alpha-1; TRNR1; TGF-beta-related neurotrophic factor receptor 1; RETL1; GDNFR; GDNF family receptor alpha-1

### Application Instructions

Application table	Application	Dilution
	ICC/IF	1:50 - 1:200
	IHC-P	1:50 - 1:200
	WB	1:500 - 1:2000
Application Note	* The dilutions indicate recommended starting dilutions and the optimal dilutions or concentrations should be determined by the scientist.	

### Properties

Form	Liquid
Purification	Affinity purified.
Buffer	PBS (pH 7.3), 0.02% Sodium azide and 50% Glycerol.
Preservative	0.02% Sodium azide
Stabilizer	50% Glycerol
Storage instruction	For continuous use, store undiluted antibody at 2-8°C for up to a week. For long-term storage, aliquot and store at -20°C. Storage in frost free freezers is not recommended. Avoid repeated freeze/thaw cycles. Suggest spin the vial prior to opening. The antibody solution should be gently mixed before use.
Note	For laboratory research only, not for drug, diagnostic or other use.

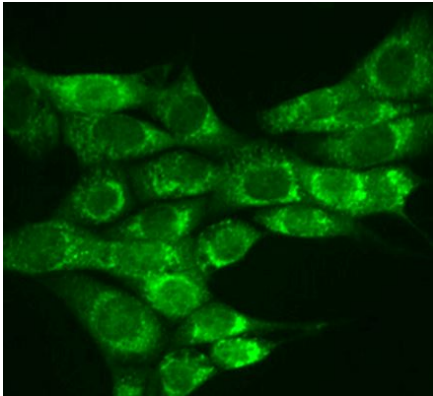
## Bioinformation

---

Gene Symbol	GFRA1
Gene Full Name	GDNF family receptor alpha 1
Background	This gene encodes a member of the glial cell line-derived neurotrophic factor receptor (GDNFR) family of proteins. The encoded preproprotein is proteolytically processed to generate the mature receptor. Glial cell line-derived neurotrophic factor (GDNF) and neurturin (NTN) are two structurally related, potent neurotrophic factors that play key roles in the control of neuron survival and differentiation. This receptor is a glycosylphosphatidylinositol (GPI)-linked cell surface receptor for both GDNF and NTN, and mediates activation of the RET tyrosine kinase receptor. This gene is a candidate gene for Hirschsprung disease. Alternative splicing results in multiple transcript variants, at least one of which encodes a preproprotein that is proteolytically processed. [provided by RefSeq, Jan 2016]
Function	Receptor for GDNF. Mediates the GDNF-induced autophosphorylation and activation of the RET receptor (By similarity). [UniProt]
Calculated Mw	51 kDa
Cellular Localization	Cell membrane; Lipid-anchor, GPI-anchor. [UniProt]

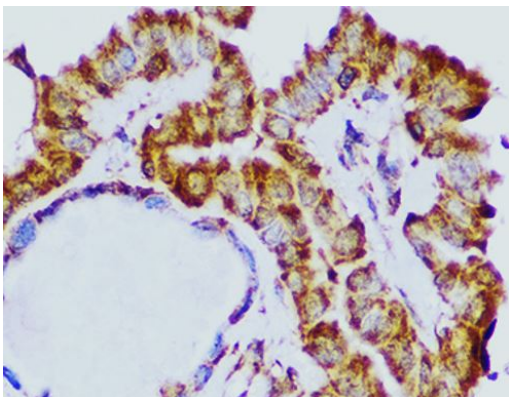
## Images

---



ARG43361 anti-GDNF Receptor alpha 1 antibody ICC/IF image

Immunofluorescence: NIH/3T3 cells stained with ARG43361 anti-GDNF Receptor alpha 1 antibody at 1:100 dilution.



ARG43361 anti-GDNF Receptor alpha 1 antibody IHC-P image

Immunohistochemistry: Paraffin-embedded Human thyroid cancer tissue stained with ARG43361 anti-GDNF Receptor alpha 1 antibody at 1:100 dilution.