

ARG43358 anti-Calmodulin antibody

Package: 100 µl
Store at: -20°C

Summary

Product Description	Rabbit Polyclonal antibody recognizes Calmodulin
Tested Reactivity	Hu, Ms
Tested Application	ICC/IF, WB
Host	Rabbit
Clonality	Polyclonal
Isotype	IgG
Target Name	Calmodulin
Species	Human
Immunogen	Synthetic peptide within aa. 1-100 of Human Calmodulin 3 (NP_005175.2).
Conjugation	Un-conjugated
Alternate Names	CaM; CALM; CAM1; CAM2; CAMB; PHKD; CPVT6; LQT16; PHKD3; CaMIII; HEL-S-72

Application Instructions

Application table	Application	Dilution
	ICC/IF	1:50 - 1:200
	WB	1:500 - 1:2000
Application Note	* The dilutions indicate recommended starting dilutions and the optimal dilutions or concentrations should be determined by the scientist.	
Positive Control	Mouse brain	
Observed Size	17 kDa	

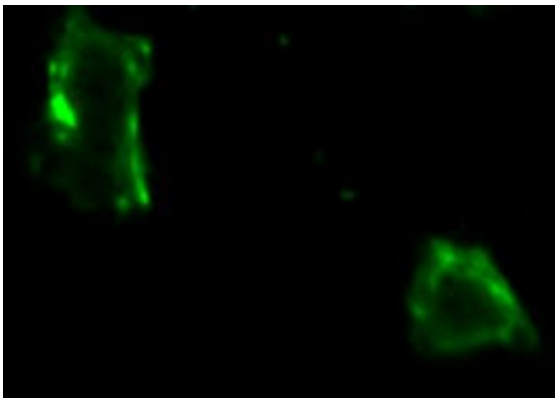
Properties

Form	Liquid
Purification	Affinity purified.
Buffer	PBS (pH 7.3), 0.02% Sodium azide and 50% Glycerol.
Preservative	0.02% Sodium azide
Stabilizer	50% Glycerol
Storage instruction	For continuous use, store undiluted antibody at 2-8°C for up to a week. For long-term storage, aliquot and store at -20°C. Storage in frost free freezers is not recommended. Avoid repeated freeze/thaw cycles. Suggest spin the vial prior to opening. The antibody solution should be gently mixed before use.
Note	For laboratory research only, not for drug, diagnostic or other use.

Bioinformation

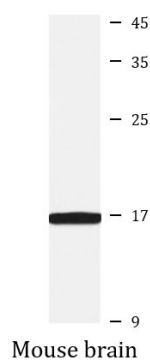
Gene Symbol	CALM3
Gene Full Name	calmodulin 3
Background	This gene encodes a member of a family of proteins that binds calcium and functions as a enzymatic co-factor. Activity of this protein is important in the regulation of the cell cycle and cytokinesis. Multiple alternatively spliced transcript variants have been observed at this gene. [provided by RefSeq, Aug 2016]
Function	Calmodulin mediates the control of a large number of enzymes, ion channels, aquaporins and other proteins through calcium-binding. Is a regulator of voltage-dependent L-type calcium channels (PubMed:31454269). Among the enzymes to be stimulated by the calmodulin-calcium complex are a number of protein kinases and phosphatases. Together with CCP110 and centrin, is involved in a genetic pathway that regulates the centrosome cycle and progression through cytokinesis. [UniProt]
Calculated Mw	17 kDa
Cellular Localization	Cytoplasm, cytoskeleton, spindle. Cytoplasm, cytoskeleton, spindle pole. Note=Distributed throughout the cell during interphase, but during mitosis becomes dramatically localized to the spindle poles and the spindle microtubules. [UniProt]

Images



ARG43358 anti-Calmodulin antibody ICC/IF image

Immunofluorescence: HeLa cells stained with ARG43358 anti-Calmodulin antibody at 1:100 dilution.



ARG43358 anti-Calmodulin antibody WB image

Western blot: 25 µg of Mouse brain lysate stained with ARG43358 anti-Calmodulin antibody.