

**ARG43327**  
**anti-RSPO1 / R spondin 1 antibody**Package: 100 µl  
Store at: -20°C

### Summary

Product Description	Rabbit Polyclonal antibody recognizes RSPO1 / R spondin 1
Tested Reactivity	Hu, Ms, Rat
Tested Application	ICC/IF, IHC-P, WB
Host	Rabbit
Clonality	Polyclonal
Isotype	IgG
Target Name	RSPO1 / R spondin 1
Species	Human
Immunogen	Recombinant fusion protein corresponding to aa. 21-263 of Human RSPO1 / R spondin 1 (NP_001033722.1).
Conjugation	Un-conjugated
Alternate Names	hRspo1; Roof plate-specific spondin-1; R-spondin-1; RSPO; CRISTIN3

### Application Instructions

Application table	Application	Dilution
	ICC/IF	1:50 - 1:200
	IHC-P	1:50 - 1:200
	WB	1:500 - 1:2000

**Application Note** \* The dilutions indicate recommended starting dilutions and the optimal dilutions or concentrations should be determined by the scientist.

### Properties

Form	Liquid
Purification	Affinity purified.
Buffer	PBS (pH 7.3), 0.02% Sodium azide and 50% Glycerol.
Preservative	0.02% Sodium azide
Stabilizer	50% Glycerol
Storage instruction	For continuous use, store undiluted antibody at 2-8°C for up to a week. For long-term storage, aliquot and store at -20°C. Storage in frost free freezers is not recommended. Avoid repeated freeze/thaw cycles. Suggest spin the vial prior to opening. The antibody solution should be gently mixed before use.
Note	For laboratory research only, not for drug, diagnostic or other use.

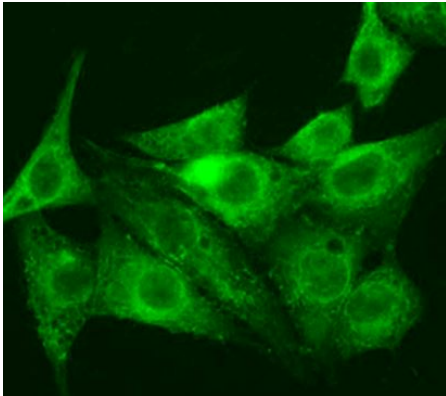
## Bioinformation

---

Gene Symbol	RSPO1
Gene Full Name	R-spondin 1
Background	This gene encodes a secreted activator protein with two cysteine-rich, furin-like domains and one thrombospondin type 1 domain. The encoded protein is a ligand for leucine-rich repeat-containing G-protein coupled receptors (LGR proteins) and positively regulates the Wnt signaling pathway. In mice, the protein induces the rapid onset of crypt cell proliferation and increases intestinal epithelial healing, providing a protective effect against chemotherapy-induced adverse effects. Alternative splicing results in multiple transcript variants. [provided by RefSeq, Apr 2014]
Function	Activator of the canonical Wnt signaling pathway by acting as a ligand for LGR4-6 receptors (PubMed:29769720). Upon binding to LGR4-6 (LGR4, LGR5 or LGR6), LGR4-6 associate with phosphorylated LRP6 and frizzled receptors that are activated by extracellular Wnt receptors, triggering the canonical Wnt signaling pathway to increase expression of target genes. Also regulates the canonical Wnt/beta-catenin-dependent pathway and non-canonical Wnt signaling by acting as an inhibitor of ZNRF3, an important regulator of the Wnt signaling pathway. Acts as a ligand for frizzled FZD8 and LRP6. May negatively regulate the TGF-beta pathway. Has a essential roles in ovary determination. Regulates Wnt signaling by antagonizing DKK1/KREM1-mediated internalization of LRP6 through an interaction with KREM1 (PubMed:17804805). [UniProt]
Calculated Mw	29 kDa
Cellular Localization	Secreted. Nucleus. Note=Seems to mainly localize to nucleoli. [UniProt]

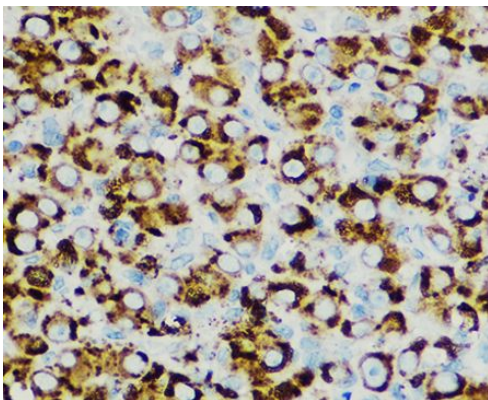
## Images

---



ARG43327 anti-RSPO1 / R spondin 1 antibody ICC/IF image

Immunofluorescence: NIH/3T3 cells stained with ARG43327 anti-RSPO1 / R spondin 1 antibody at 1:100 dilution.



ARG43327 anti-RSPO1 / R spondin 1 antibody IHC-P image

Immunohistochemistry: Paraffin-embedded Rat ovary tissue stained with ARG43327 anti-RSPO1 / R spondin 1 antibody at 1:100 dilution.