

## ARG43316 anti-CD272 / BTLA antibody

Package: 100 µl  
Store at: -20°C

### Summary

Product Description	Rabbit Polyclonal antibody recognizes CD272 / BTLA
Tested Reactivity	Hu, Ms
Tested Application	FACS, IHC-P, IP, WB
Host	Rabbit
Clonality	Polyclonal
Isotype	IgG
Target Name	CD272 / BTLA
Species	Mouse
Immunogen	Recombinant protein of Mouse CD272 / BTLA.
Conjugation	Un-conjugated
Alternate Names	CD antigen CD272; BTLA1; B- and T-lymphocyte-associated protein; B- and T-lymphocyte attenuator; CD272

### Application Instructions

Application table	Application	Dilution
	FACS	1:100
	IHC-P	1:20
	IP	1:20
	WB	1:1000
Application Note	* The dilutions indicate recommended starting dilutions and the optimal dilutions or concentrations should be determined by the scientist.	
Positive Control	K562	
Observed Size	~ 72 kDa	

### Properties

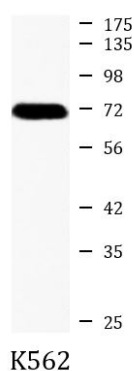
Form	Liquid
Purification	Affinity purified.
Buffer	50 mM Tris-Glycine (pH 7.4), 150 mM NaCl, 0.01% Sodium azide, 40% Glycerol and 0.05% BSA.
Preservative	0.01% Sodium azide
Stabilizer	40% Glycerol and 0.05% BSA
Concentration	Batch dependent

<b>Storage instruction</b>	For continuous use, store undiluted antibody at 2-8°C for up to a week. For long-term storage, aliquot and store at -20°C. Storage in frost free freezers is not recommended. Avoid repeated freeze/thaw cycles. Suggest spin the vial prior to opening. The antibody solution should be gently mixed before use.
<b>Note</b>	For laboratory research only, not for drug, diagnostic or other use.

## Bioinformation

<b>Gene Symbol</b>	BTLA
<b>Gene Full Name</b>	B and T lymphocyte associated
<b>Background</b>	This gene encodes a member of the immunoglobulin superfamily. The encoded protein contains a single immunoglobulin (Ig) domain and is a receptor that relays inhibitory signals to suppress the immune response. Alternative splicing results in multiple transcript variants. Polymorphisms in this gene have been associated with an increased risk of rheumatoid arthritis. [provided by RefSeq, Aug 2011]
<b>Function</b>	Inhibitory receptor on lymphocytes that negatively regulates antigen receptor signaling via PTPN6/SHP-1 and PTPN11/SHP-2 (PubMed:12796776, PubMed:14652006, PubMed:15568026, PubMed:18193050). May interact in cis (on the same cell) or in trans (on other cells) with TNFRSF14 (PubMed:19915044). In cis interactions, appears to play an immune regulatory role inhibiting in trans interactions in naive T cells to maintain a resting state. In trans interactions, can predominate during adaptive immune response to provide survival signals to effector T cells (PubMed:19915044). [UniProt]
<b>Calculated Mw</b>	33 kDa
<b>PTM</b>	Phosphorylated on Tyr residues by TNFRSF14 and by antigen receptors cross-linking, both inducing association with PTPN6 and PTPN11.  N-glycosylated. [UniProt]
<b>Cellular Localization</b>	Membrane; Single-pass type I membrane protein. [UniProt]

## Images



ARG43316 anti-CD272 / BTLA antibody WB image

Western blot: K562 cell lysate stained with ARG43316 anti-CD272 / BTLA antibody at 1:1000 dilution.